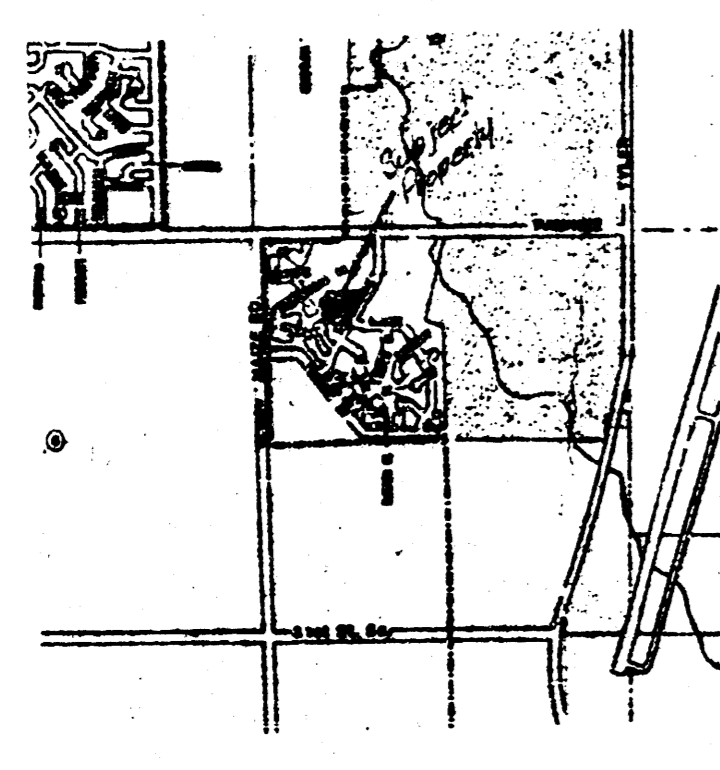


BENCH MARK
 of Square City Top of Curb
 E. side of Yellowstone 50
 N. of Yosemite Dr.
 Elevation = 1521.8 City Datum



PRELIMINARY PLAT
 PART OF LOT 1, BLOCK 1, THE PARK AN ADDITION
 TO WICHITA, SEDGWICK COUNTY, KANSAS.
THE PARK 2ND ADDITION

OWNER: A-K CORPORATION

DRAINAGE PLAN 22.87

BAUGHMAN COMPANY, P.A.
 SURVEYING & ENGINEERING
 316262-7271 • 330 LAURA • WICHITA, KANSAS 67211

THE PARK 2ND ADDITION
 (Detail)

BAUGHMAN COMPANY, P.A.
 SURVEYING & ENGINEERING
 316262-7271 • 315 ELLIS • WICHITA, KANSAS 67211

DRAINAGE REPORT
 THE PARK 2ND ADDITION
 WICHITA, KANSAS
 FEBRUARY 2, 1987

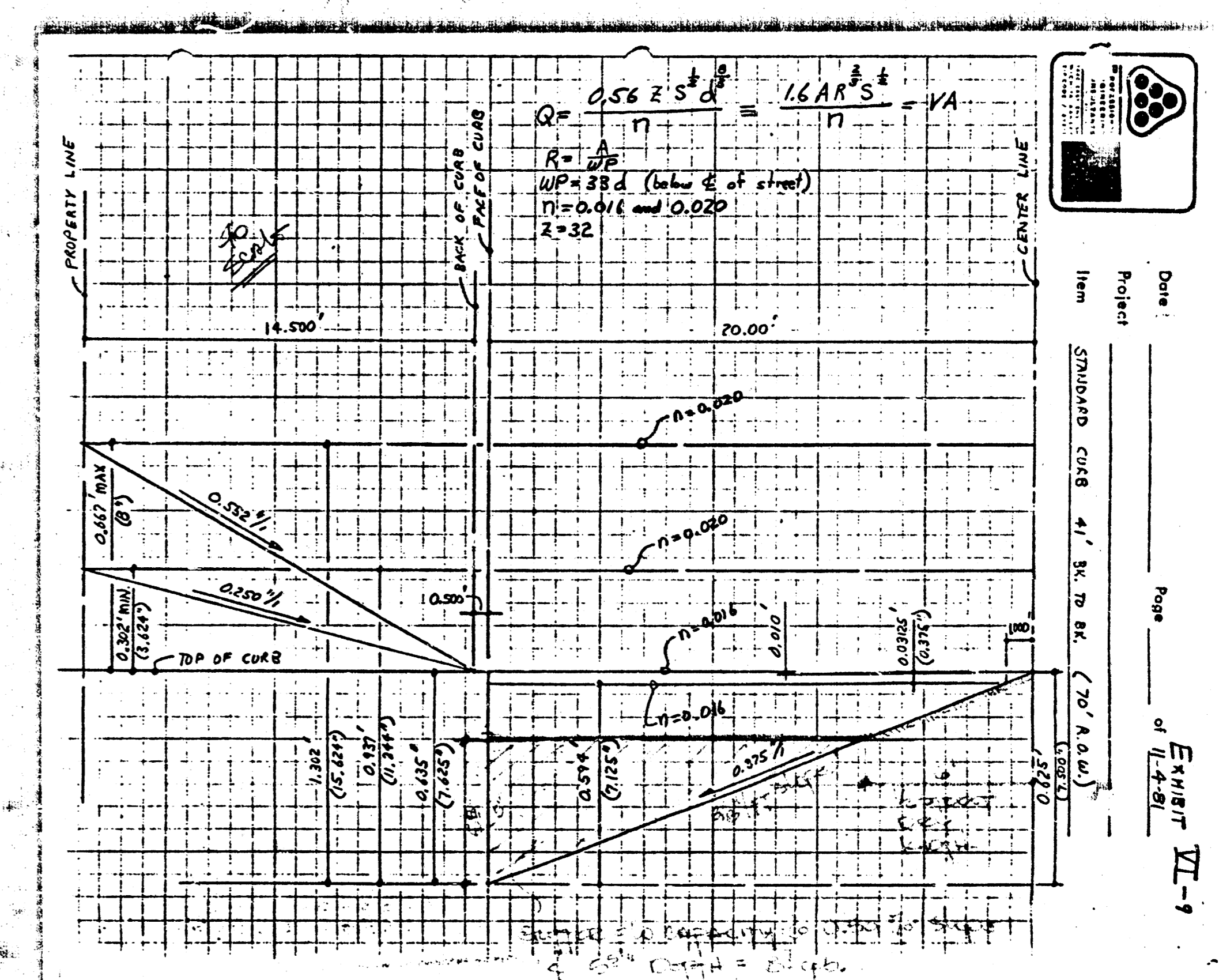
The proposed lots in "The Park 2nd Addition" will be residential with a runoff factor (c) of 0.5. Yellowstone Court will drain to the east to Yellowstone which is a collector. Yellowstone drains north to Pawnee and discharges storm water run-off into existing inlets and pipe at Pawnee as indicated.

Approximately 2.2 acres, when developed, will be drained to Yellowstone which will generate 4.1 CFS from the two year storm and 8.5 CFS from the 100 year storm. The collector pavement is required to keep a minimum of 12" of dry pavement surface during the storm. Using this criteria, the 12" dry pavement width allows up to 5.5 inches of gutter flow for storm water runoff to be carried in. The slope of the collector street is at a minimum of 0.50 percent grade which will allow up to 8.7 CFS per gutter at a depth of 5.5 inches at the flow line. (See attached charts.) From these calculations, the collector street is adequate to convey the run-off from the plat to the storm sewer at Pawnee.

The area to the north of this plat is developed into townhomes with the majority of the area draining to the west and north. The capacity of the storm sewer at Pawnee which will receive this run-off has been checked and is sufficiently sized to convey the runoff amount anticipated from these areas.

Other areas of this plat will drain, when developed, as indicated. The backs of most of the lots in the Cul-De-Sac will be graded to drain west and north into the floodway area which drains further north across Pawnee and eventually into the Cowakin Creek.

Other areas of lots adjacent to Yellowstone will drain to Yellowstone as indicated. The majority of this runoff will be discharged into the existing storm sewer which follows Glacier Drive to the east. The back lot areas of this plat will be graded as necessary in order for run-off from the development to be conveyed thru the reserve areas and into the floodway.



Depth in @Curb #	S = 0.0032		S = 0.0050		S = 0.0075		S = 0.0100	
	Q ft ³ /hr	V ft/hr	Q	V	Q	V	Q	V
0.5	0.0117	0.420	0.015	0.525	0.018	0.643	0.021	0.743
1.0	0.0739	0.666	0.0924	0.833	0.113	1.019	0.131	1.179
1.5	0.2180	0.873	0.2725	1.091	0.334	1.336	0.386	1.545
2.0	0.4720	1.058	0.5960	1.323	0.722	1.619	0.825	1.573
2.5	0.8480	1.225	1.060	1.531	1.297	1.874	1.501	2.163
3.0	1.3850	1.385	1.7313	1.731	2.119	2.119	2.451	2.451
3.5	2.096	1.536	2.6200	1.920	3.207	2.350	3.710	2.719
4.0	2.975	1.677	3.719	2.096	4.552	2.566	5.266	2.968
4.5	4.085	1.815	5.106	2.269	6.250	2.777	7.230	3.213
5.0	5.420	1.949	6.775	2.436	8.293	2.982	9.593	3.450
5.5	6.961	2.074	8.701	2.593	10.650	3.173	12.321	3.671
6.0	8.800	2.199	11.000	2.749	13.464	3.364	15.576	3.892
6.5	10.909	2.320	13.636	2.900	16.691	3.550	19.309	4.106
7.0	13.249	2.436	16.581	3.045	20.271	3.727	23.451	4.312
7.125	13.926	2.467	17.408	3.084	21.302	3.774	24.649	4.367
7.50	15.953	2.552	19.941	3.190	24.408	3.905	28.237	4.517
7.625	17.436	2.575	21.295	3.219	25.777	3.947	29.962	4.549
7.744	18.911	2.598	22.649	3.248	27.146	3.989	31.687	4.581
7.863	20.386	2.621	24.003	3.277	28.515	4.031	33.412	4.613
7.982	21.861	2.644	25.357	3.306	29.884	4.073	35.137	4.645

Due to _____
 Project _____
 Item _____
 Page _____ of _____
 Exhibit _____

Due to _____
 Project _____
 Item _____
 Page _____ of _____
 Exhibit _____