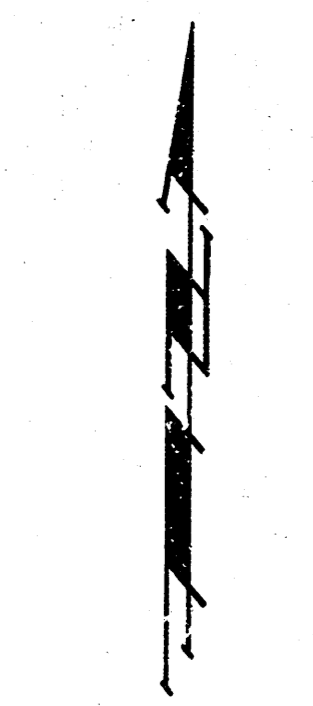
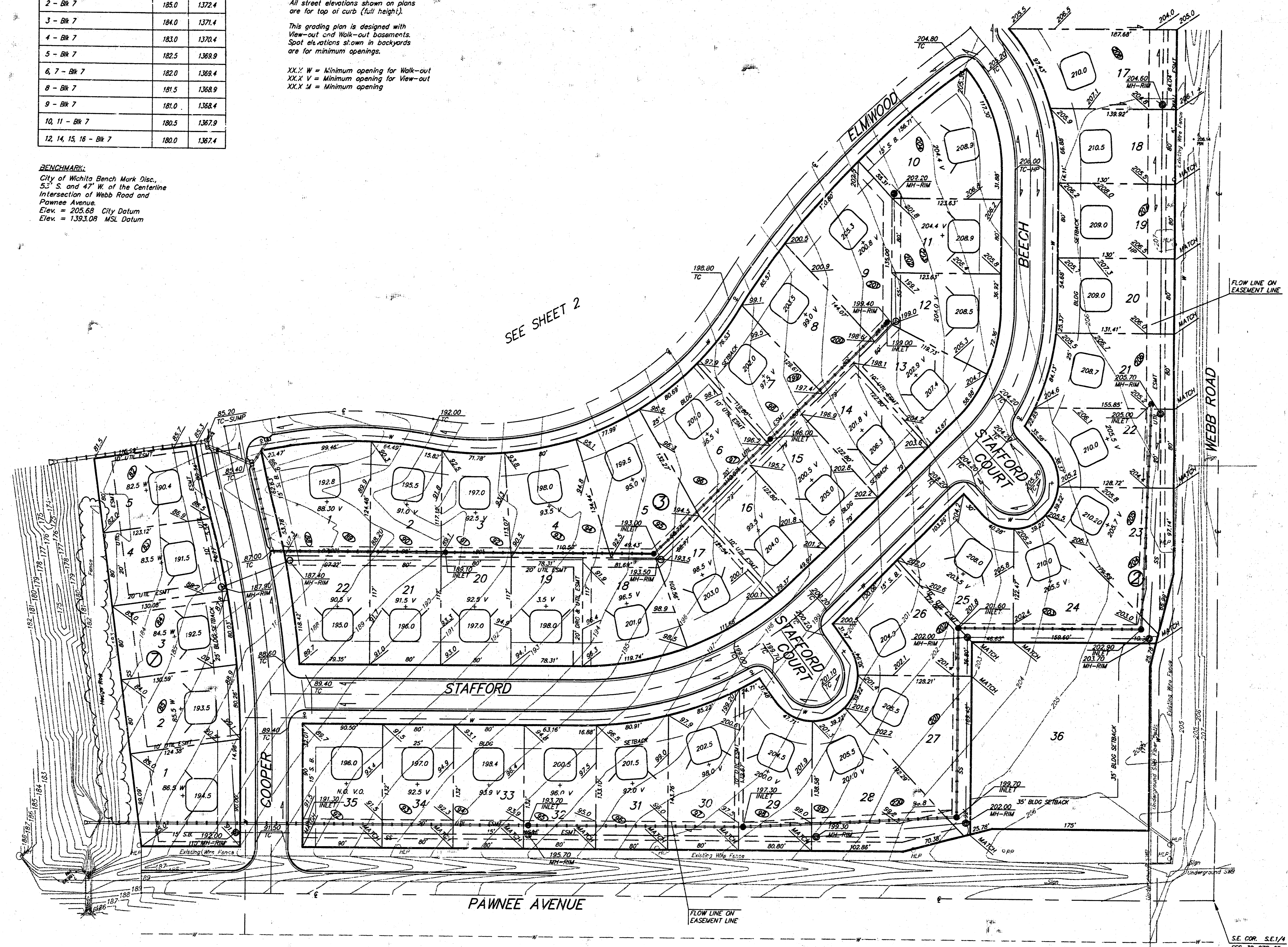


MINIMUM BUILDING PAD ELEVATIONS FOR LOWEST OPENING OF STRUCTURE

Lot & Block	City Datum	M.S.L.
1 - Blk 7	186.0	1371.4
2 - Blk 7	185.0	1372.4
3 - Blk 7	184.0	1371.4
4 - Blk 7	183.0	1372.4
5 - Blk 7	182.5	1369.9
6, 7 - Blk 7	182.0	1368.4
8 - Blk 7	181.5	1368.9
9 - Blk 7	181.0	1368.4
10, 11 - Blk 7	180.5	1367.9
12, 14, 15, 16 - Blk 7	180.0	1367.4

**NOTE:**  
Proposed minimum finish floor elevations are shown on plans. Contractor to set garage floor elevation. All street elevations shown on plans are for top of curb (full height). This grading plan is designed with View-out and Walk-out basements. Spot elevations shown in backyards are for minimum openings.  
XX.X W = Minimum opening for Walk-out  
XX.X V = Minimum opening for View-out  
XX.X J = Minimum opening

**BENCHMARK:**  
City of Wichita Bench Mark Disc., 53' S. and 47' W. of the Centerline Intersection of Webb Road and Pawnee Avenue. Elev. = 205.69 City Datum Elev. = 1393.09 M.S.L. Datum



1" = 60'-0"  
• = 1/2" Rebar

**APPROVED DRAINAGE PLAN**

Revised 11/17/98  
Revised 6/24/98  
Revised 3/28/97

**PEBBLEBROOK ADDITION  
LOT GRADING PLAN**

**BAUGHMAN COMPANY P.A.**  
ENGINEERING, SURVEYING, & PLANNING  
310-262-7271 • 315 ELLIS • WICHITA, KANSAS 67211

PROJECT NUMBER: \_\_\_\_\_ SHEET: **1** of **3**

DESIGN: G.A.M. DRAWN: \_\_\_\_\_ APPROVED: \_\_\_\_\_ DATE: 4-5-93 SCALE: 1"=60'