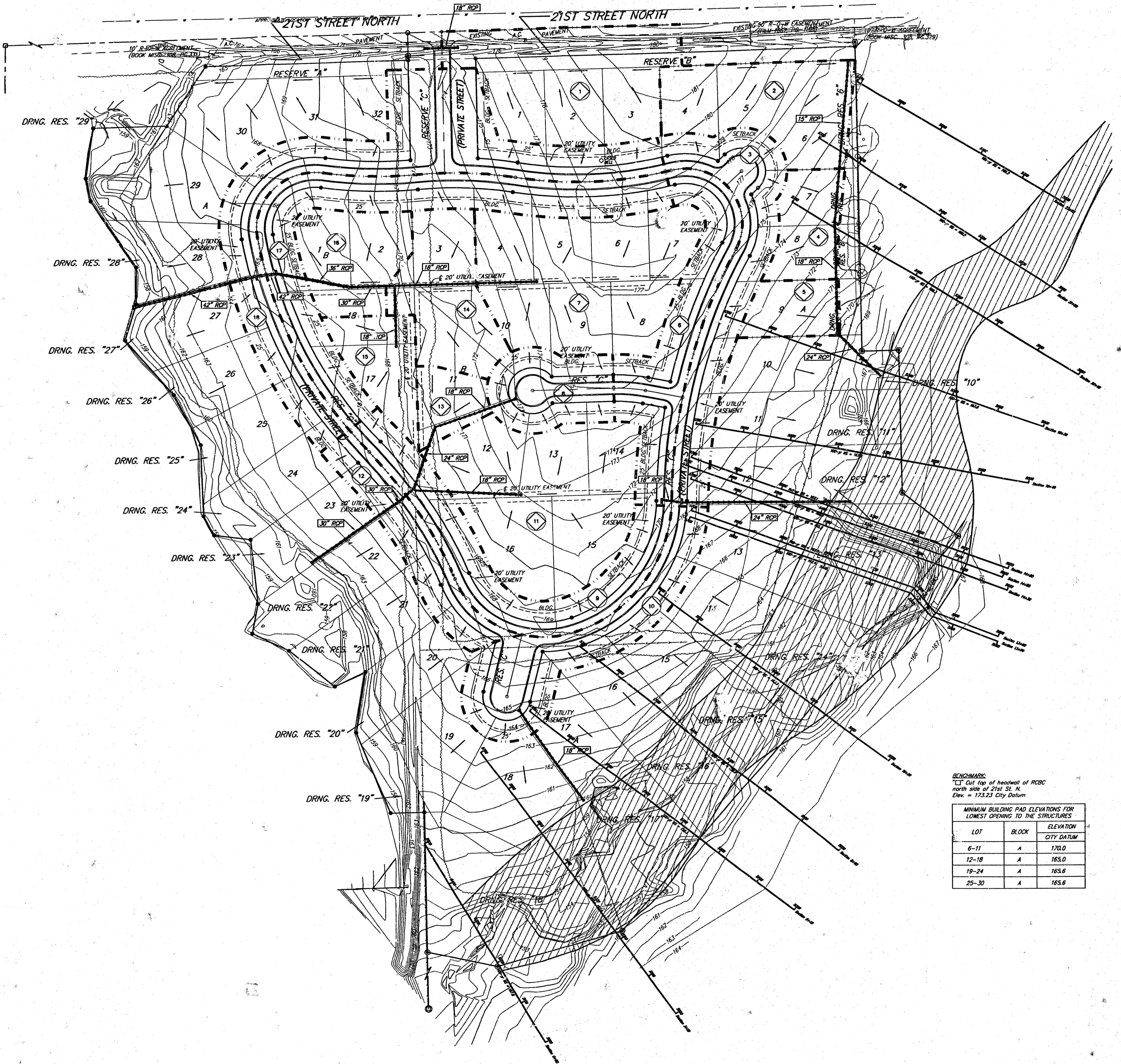
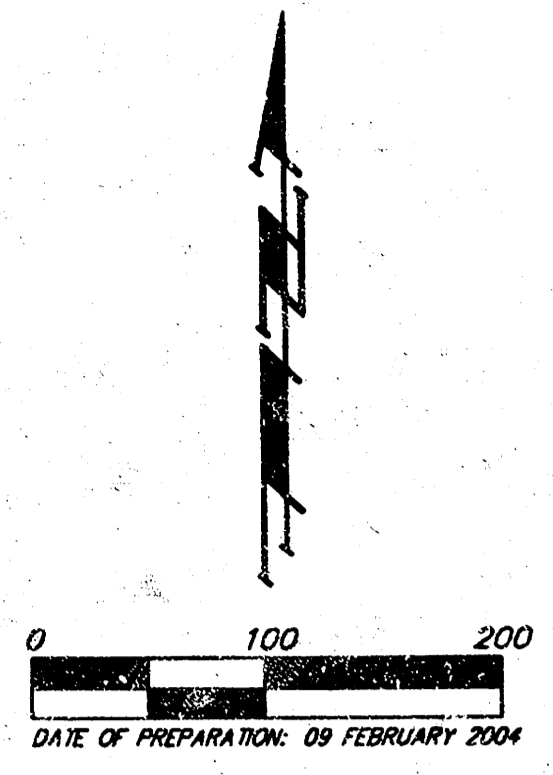


REED'S COVE 3RD ADDITION WICHITA, SEDGWICK COUNTY, KANSAS



BENCHMARK:
 [] Cut top of headwall of RCBC
 north side of 21st St. N.
 Elev. = 173.23 City Datum

MINIMUM BUILDING PAD ELEVATIONS FOR LOWEST OPENING TO THE STRUCTURES		
LOT	BLOCK	ELEVATION CITY DATUM
6-11	A	170.0
12-18	A	165.0
19-24	A	165.6
25-30	A	165.6

Basin	Area acres	C2	C5	C100	Q2 cfs	Q5 cfs	Q100 cfs
1	2.3	0.42	0.48	0.72	3.7	5.0	12.2
2	1.6	0.42	0.48	0.72	2.8	3.5	8.5
3	1.9	0.42	0.48	0.72	3.1	4.2	10.1
4	0.7	0.42	0.48	0.72	1.1	1.5	3.7
5	0.5	0.42	0.48	0.72	0.8	1.1	2.7
6	1.6	0.42	0.48	0.72	2.8	3.5	8.5
7	2.8	0.42	0.48	0.72	4.5	6.1	14.9
8	0.9	0.42	0.48	0.72	1.4	2.0	4.8
9	1.7	0.42	0.48	0.72	2.7	3.7	9.0
10	1.7	0.42	0.48	0.72	2.7	3.7	9.0
11	2.9	0.42	0.48	0.72	4.7	6.3	15.4
12	1	0.42	0.48	0.72	1.6	2.2	5.3
13	0.5	0.42	0.48	0.72	0.8	1.1	2.7
14	1.3	0.42	0.48	0.72	2.1	2.8	6.9
15	0.8	0.42	0.48	0.72	1.3	1.8	4.2
16	1.1	0.42	0.48	0.72	1.8	2.4	5.8
17	2.3	0.42	0.48	0.72	3.7	5.0	12.2
18	3.3	0.42	0.48	0.72	5.3	7.2	17.5

