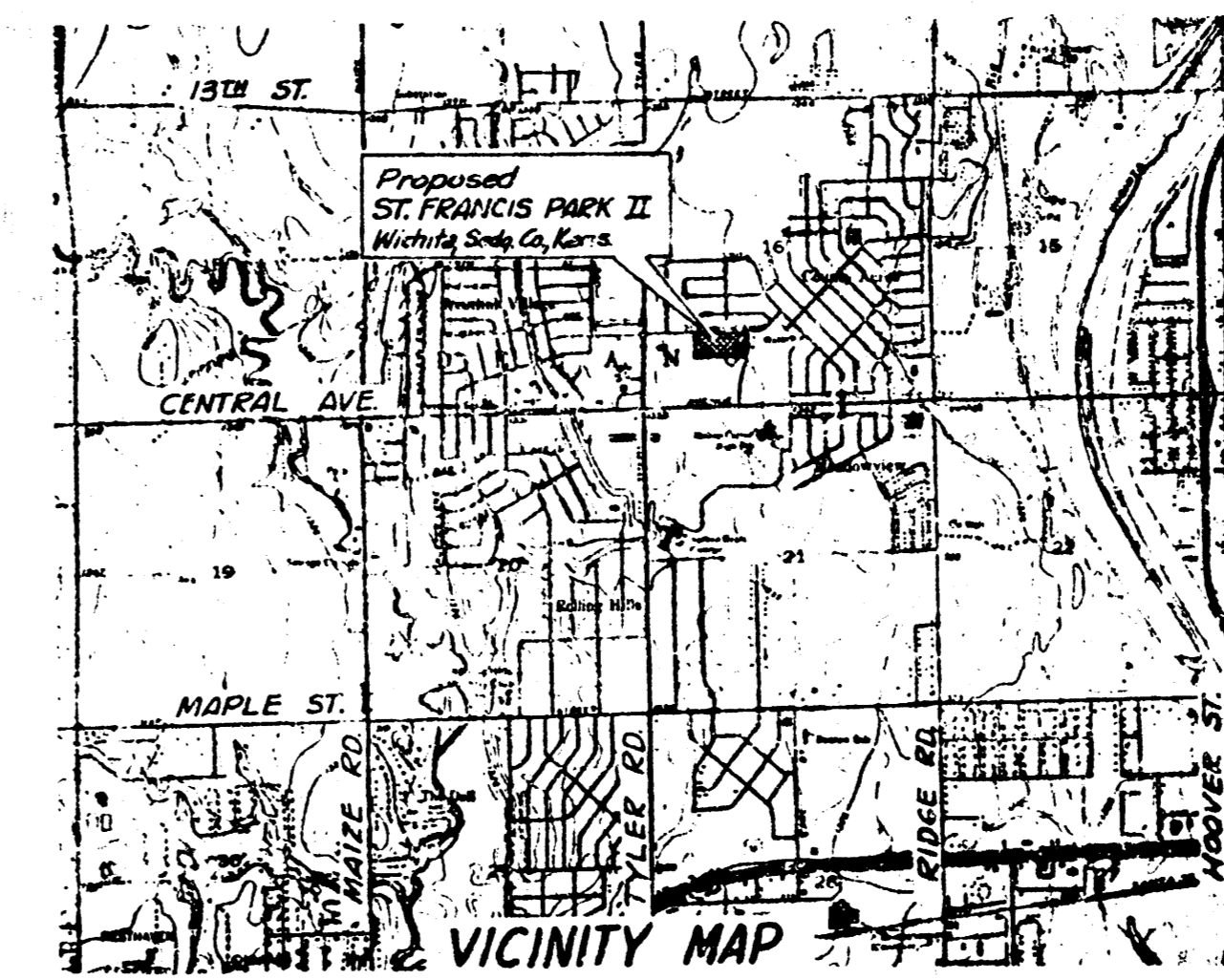


ST. FRANCIS OF ASSISI PARK II  
(DRAINAGE)

### DRAINAGE PLAN ST. FRANCIS OF ASSISI PARK II WICHITA, SEDGWICK CO, KANSAS



COUNTRY ACRES  
(RESIDENTIAL)

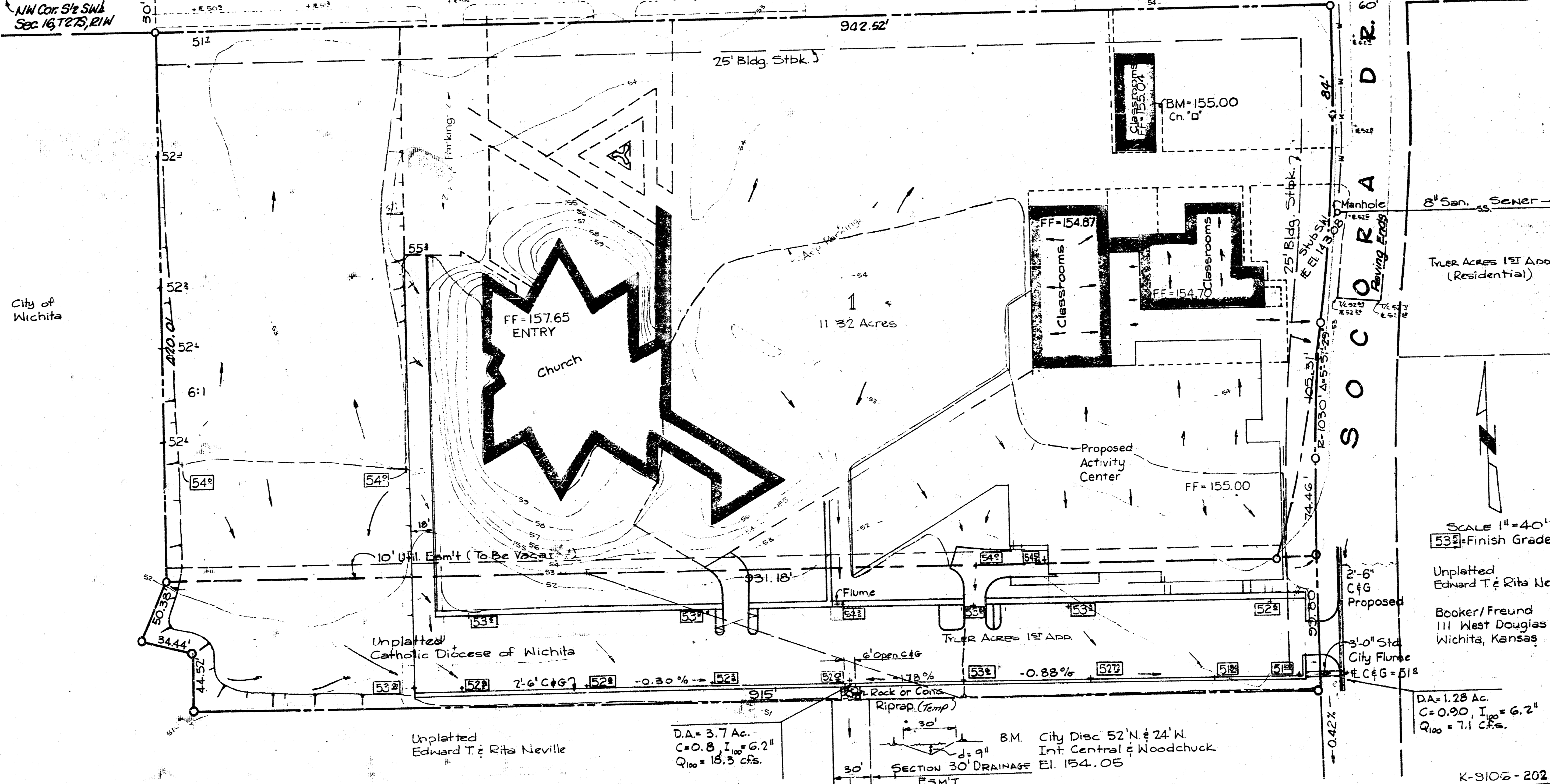
RECA AVE.

SECOND ADD  
(RESIDENTIAL)

BEKEMEYER AVE. 972.24'

910.76'  
NW Cor. 3/4 SW 1/4  
Sec. 16, T27S, R1W

757.0'  
NE Cor. 3/4 SW 1/4  
Sec. 16, T27S, R1W



City of Wichita

8" San. Sewer

Truer Acres 1st Add.  
(Residential)

SCALE 1" = 40'

53.2' Finish Grade

Unplatted  
Edward T & Rita Neville

Booker/Freund  
111 West Douglas  
Wichita, Kansas

2'-6" C & G Proposed  
3'-0" Sid City Flume  
# C & G = 51.2

DA = 1.28 Ac.  
C = 0.90, I<sub>100</sub> = 6.2"  
Q<sub>100</sub> = 7.1 C.F.S.

Unplatted  
Edward T & Rita Neville  
DA = 3.7 Ac.  
C = 0.8, I<sub>100</sub> = 6.2"  
Q<sub>100</sub> = 13.3 C.F.S.

30' SECTION 30' DRAINAGE  
E. 154.05  
ESMT  
B.M. City Disc 52' N & 24' N  
Int. Central & Woodchuck

K-9106-202