

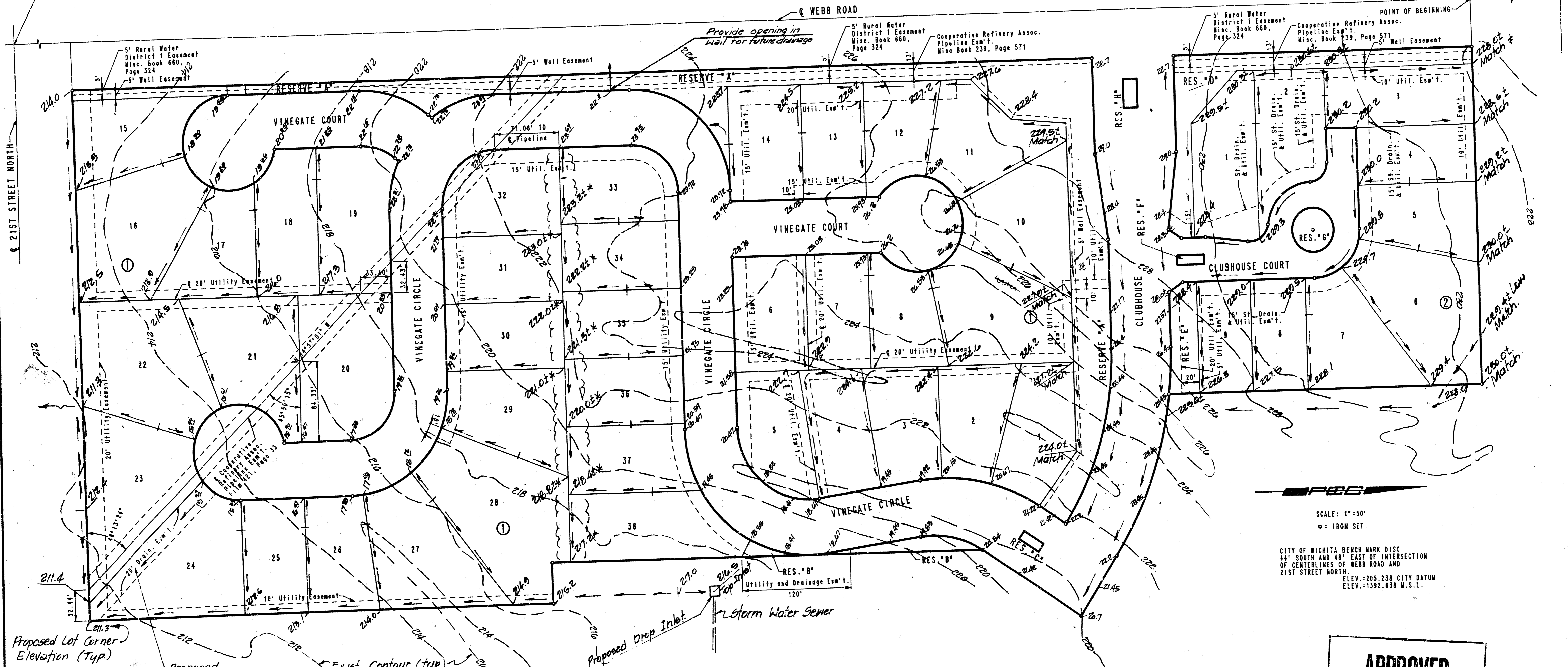
DRAINAGE PLAN 2/22/01
 A REPLAT OF A PORTION OF TALLGRASS EAST ADDITION.
TALLGRASS EAST 5TH ADDITION
 OWNER: RITCHIE ASSOCIATES, 8100 E. 22ND ST. NO. BLD. 1000, WICHITA, KANSAS 67226



TALLGRASS EAST 5TH ADDITION TO WICHITA, SEDGWICK COUNTY, KANSAS

N.W. CORNER S.W. 1/4
SEC. 4, T27S, R2E
OF THE 6TH P.W.

S.W. CORNER
SEC. 4, T27S, R2E
OF THE 6TH P.W.



Proposed Lot Corner
Elevation (Typ.)

Proposed
Overflow Shale

* Match Existing @ Hedge Row
Provide Opening For drainage under wall

SCALE: 1"=50'
o = IRON SET

CITY OF WICHITA BENCH MARK DISC
44' SOUTH AND 48' EAST OF INTERSECTION
OF CENTERLINES OF WEBB ROAD AND
21ST STREET NORTH
ELEV. +205.238 CITY DATUM
ELEV. +1392.638 M.S.L.

**APPROVED
DRAINAGE PLAN**

164'E"

Nov. 14, 1991
July 23, 1991
Rev. May, 1991
April, 1991. DETAILED DRAINAGE PLAN