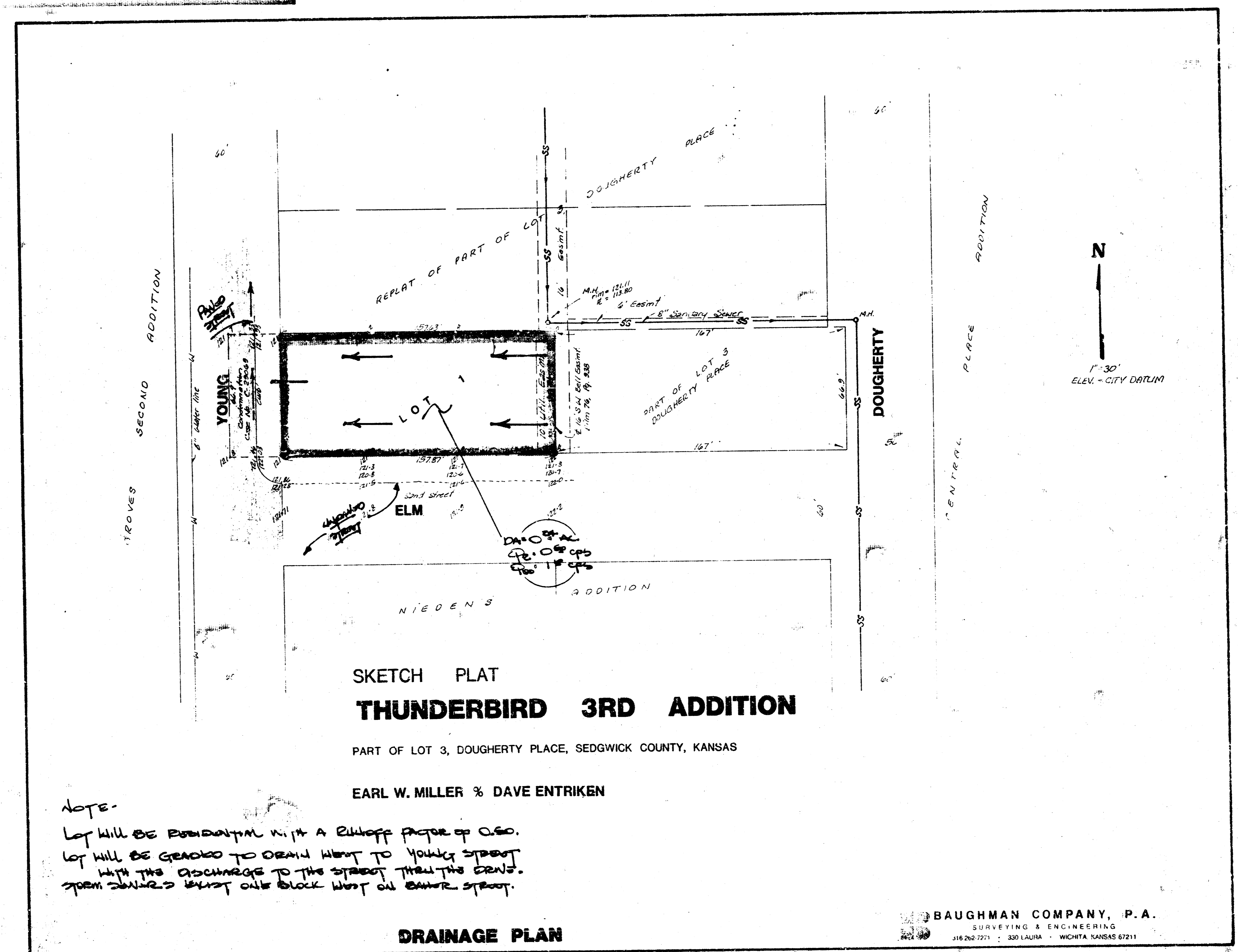


THUNDERBIRD 3RD ADDITION
(Drainage)



SKETCH PLAT
THUNDERBIRD 3RD ADDITION

PART OF LOT 3, DOUGHERTY PLACE, SEDGWICK COUNTY, KANSAS

EARL W. MILLER & DAVE ENTRIKEN

Notes-
 Lot will be residential with a Ruloff factor of 0.50.
 Lot will be graded to drain toward Young Street
 with the discharge to the street thru the drain.
 Storm sewers must not block flow on lower street.

DRAINAGE PLAN

BAUGHMAN COMPANY, P.A.
 SURVEYING & ENGINEERING
 316 262-7271 • 330 LAURA • WICHITA, KANSAS 67211