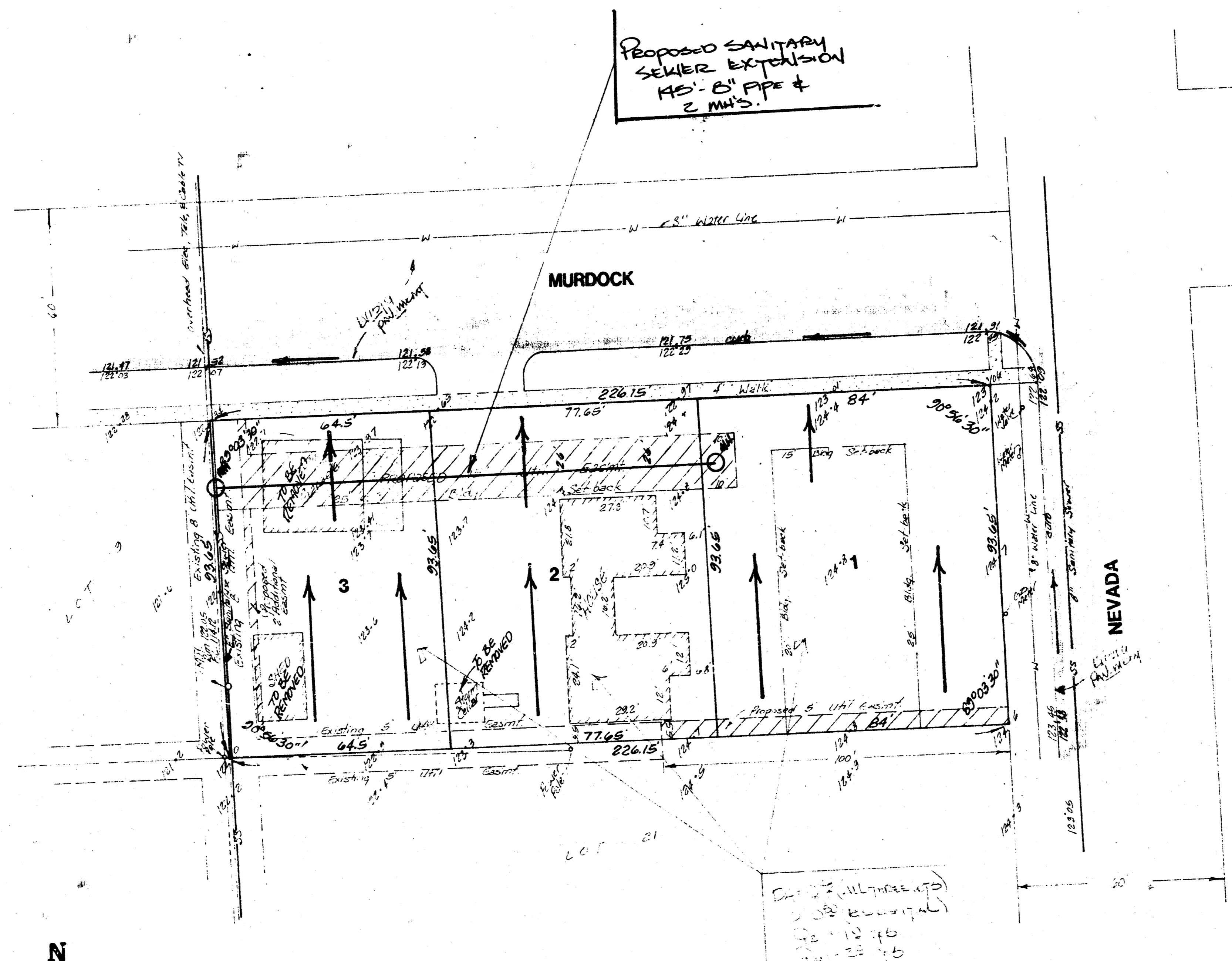


THUNDERBIRD 4TH ADDITION
(Drainage)



SKETCH PLAT
THUNDERBIRD 4TH ADDITION
 LOT 22, REPLAT OF LOTS 3, 4, 5, 6, 7, 8, 9, CENTRAL
 PLACE ADDITION, SEDGWICK COUNTY, KANSAS.

OWNER: DAVID W. ENTRIKEN

DRAINAGE PLAN C-1-85



1" = 20'
 ELEV. - CITY DATUM

SEWER MARK:
 1/2" diameter pipe 18" E of W of E. corner of
 E. 27th St.
 Elev. = 121.00 City Datum

SEWER MARK: (S)
 1/2" diameter pipe 18" E of W of E. corner of
 Murdock & Nevada
 Elev. = 123.00 City Datum

GENERAL NOTES
 The lots in this plat are to be residential lots with a runoff
 factor of 0.50 used in the calculations. The lots when developed
 will drain north to the pavement on Murdock which drains to the west.
 Discharge to the street will be thru driveways.

BAUGHMAN COMPANY, P.A.
 SURVEYING & ENGINEERING
 316.262.7271 • 300 LAURA • WICHITA, KANSAS 67211

12/21/85