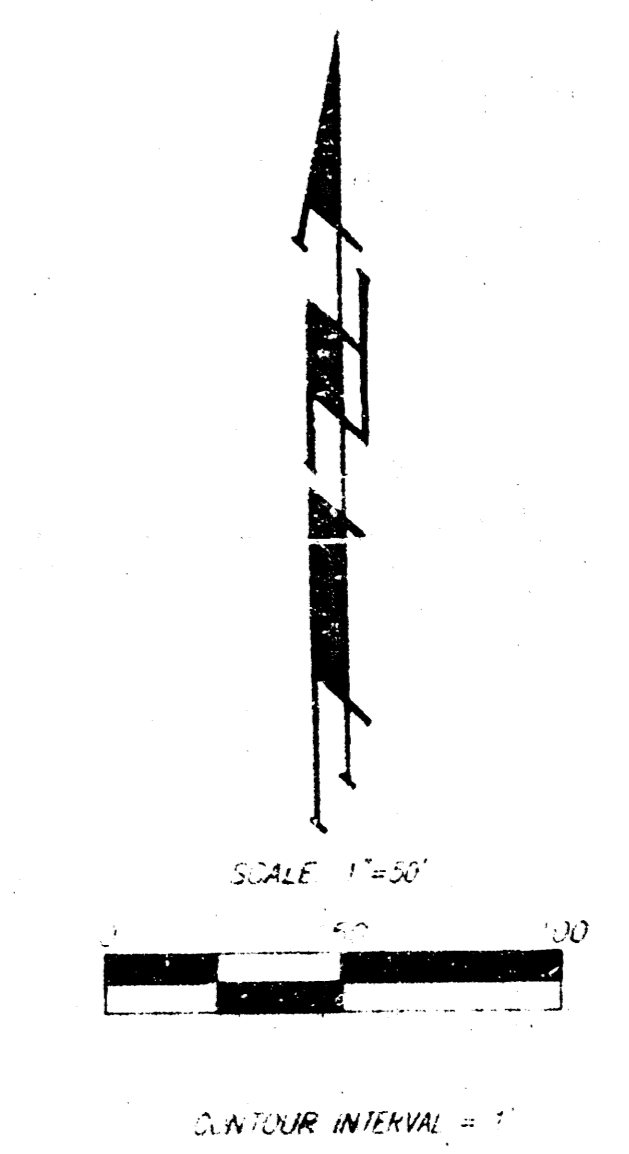
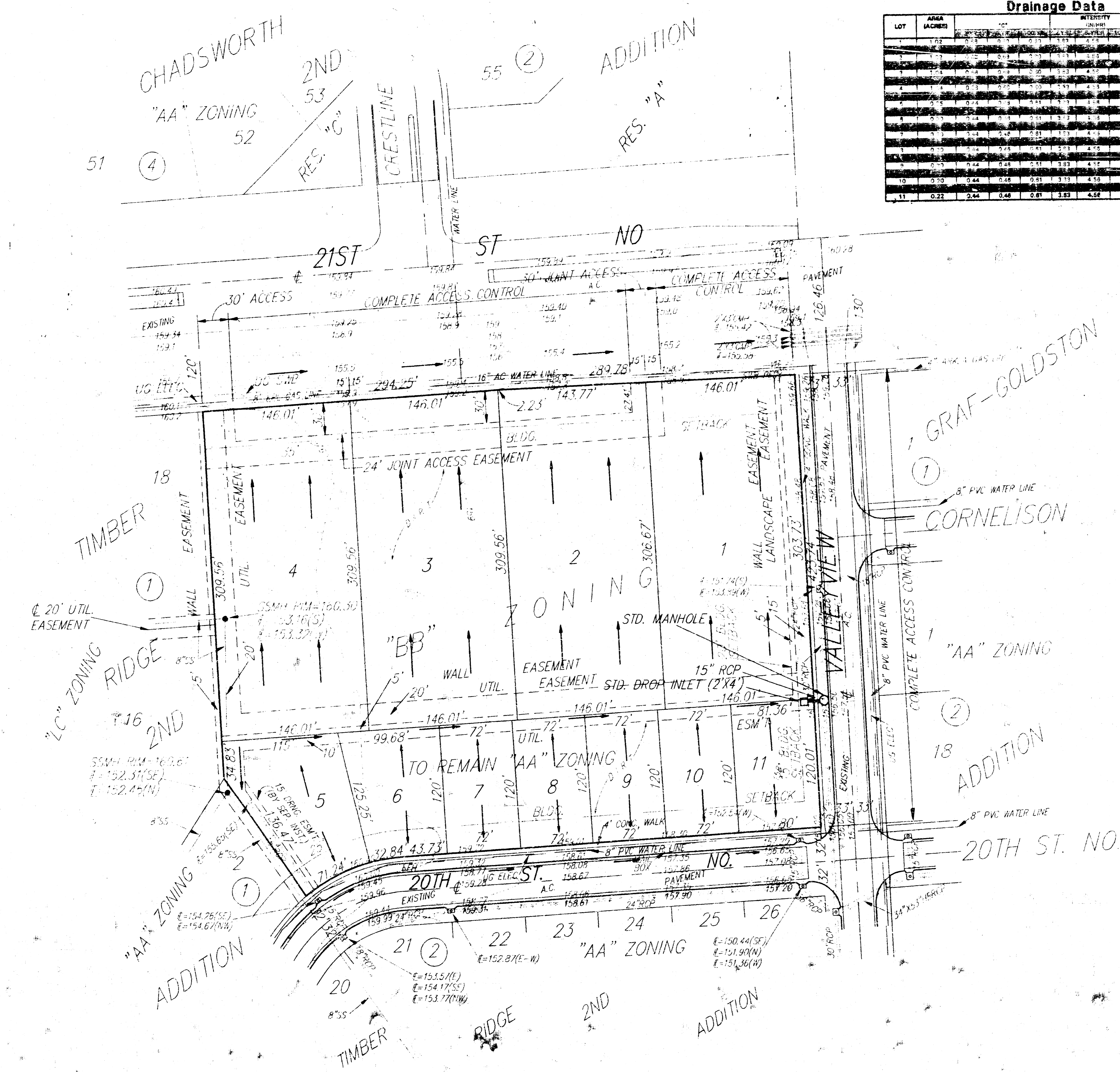


DRAINAGE CONCEPT  
**TIMBER RIDGE 3RD ADDITION**  
 WICHITA, SEDGWICK COUNTY, KANSAS

**Drainage Data**

LOT	AREA (ACRES)	INTENSITY (INCHES)	FLOW RATE (CFS)
1	0.22	0.44	0.40
2	0.22	0.44	0.40
3	0.22	0.44	0.40
4	0.22	0.44	0.40
5	0.22	0.44	0.40
6	0.22	0.44	0.40
7	0.22	0.44	0.40
8	0.22	0.44	0.40
9	0.22	0.44	0.40
10	0.22	0.44	0.40
11	0.22	0.44	0.40
12	0.22	0.44	0.40
13	0.22	0.44	0.40
14	0.22	0.44	0.40
15	0.22	0.44	0.40
16	0.22	0.44	0.40
17	0.22	0.44	0.40
18	0.22	0.44	0.40
19	0.22	0.44	0.40
20	0.22	0.44	0.40
21	0.22	0.44	0.40
22	0.22	0.44	0.40
23	0.22	0.44	0.40
24	0.22	0.44	0.40
25	0.22	0.44	0.40
26	0.22	0.44	0.40



OWNER:  
 B. & E. INVESTMENTS  
 ATTN: MATT ECK  
 5512 W. CENTRAL  
 WICHITA, KS 67212  
 PH# 316-342-7402

LEGAL DESCRIPTION:  
 A REPLAT OF LOT 1, BLOCK 1, TIMBER RIDGE 2ND ADDITION,  
 WICHITA, SEDGWICK COUNTY, KANSAS.

BENCHMARK:  
 "1" CUT, TOP OF CURB, 14.5' E. & 15' S. OF THE  
 NE CORNER OF LOT 1, BLOCK 1, TIMBER RIDGE 2ND  
 ADDITION, WICHITA, SEDGWICK COUNTY, KANSAS  
 ELEV. = 159.26 CITY DATUM

