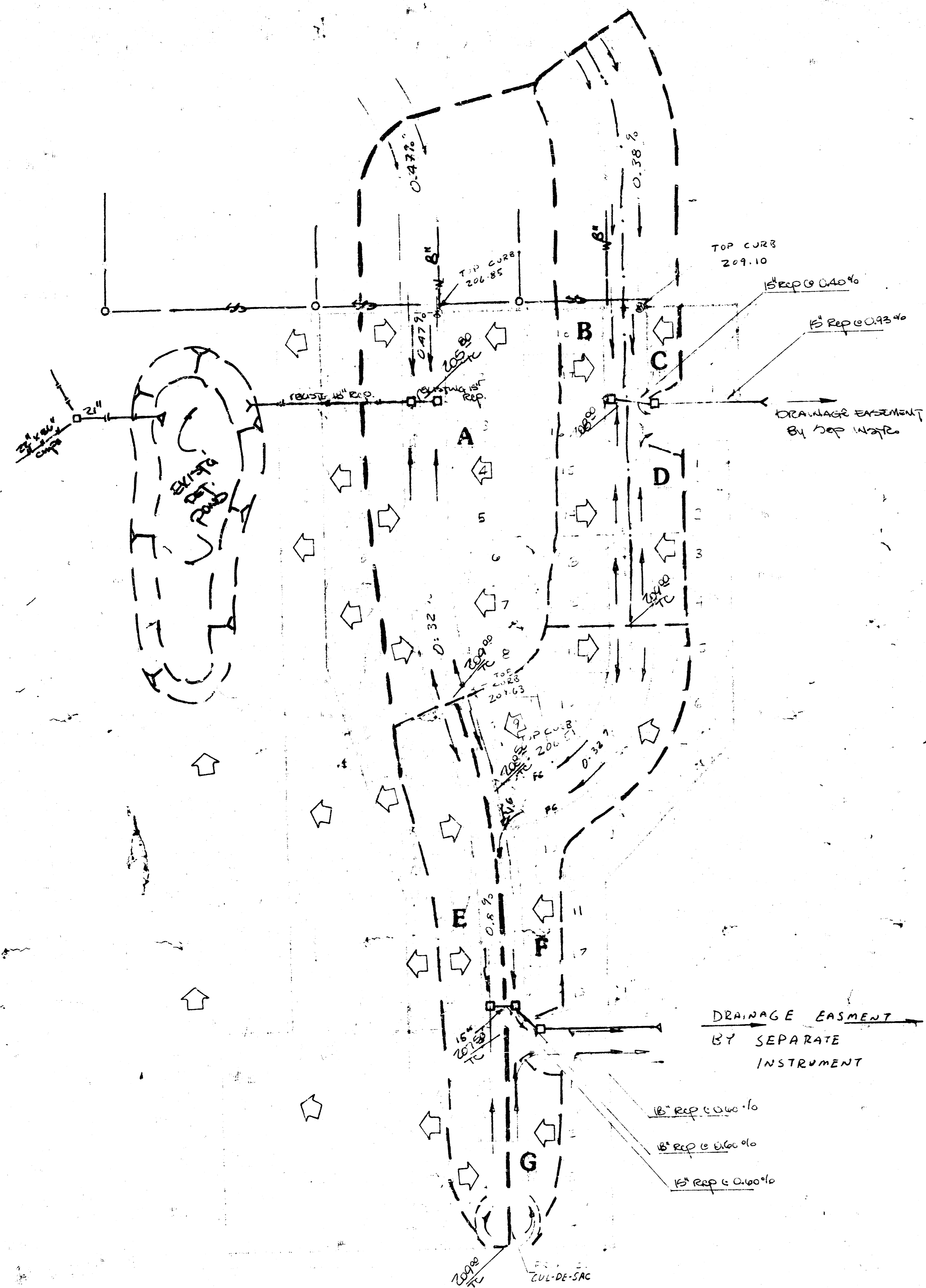
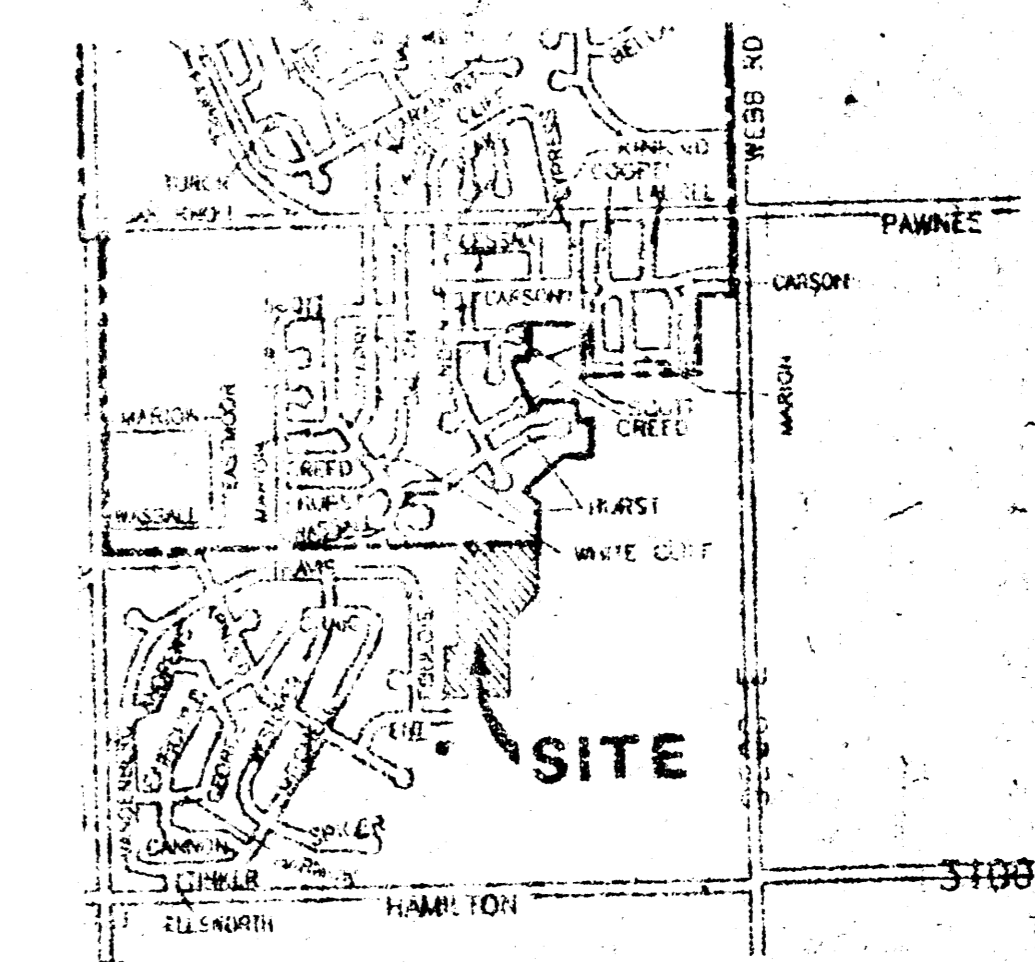


1/2" = 1' PLAN
TOWNE PARC 5TH ADDITION
 WICHITA, SEDGWICK COUNTY, KANSAS



DESIGN DATA

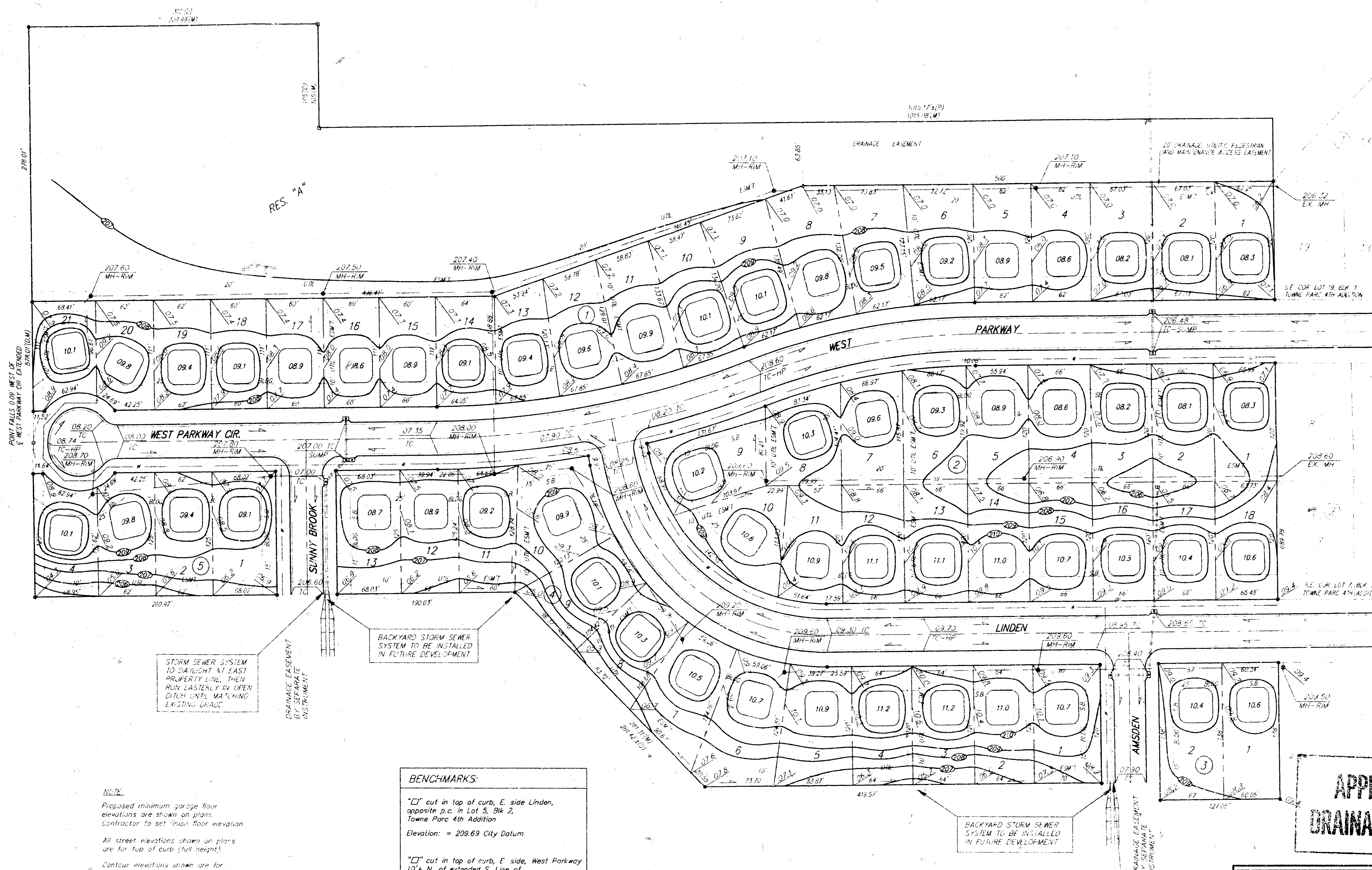
SEC	DA	C_{100}	Q_2	Q_{100}	
A	55 ac	0.53	0.77	11.2 cfs	31.2 cfs
B	19 ac	0.53	0.77	3.9 cfs	10.8 cfs
C	1.1 ac	0.53	0.77	2.2 cfs	6.2 cfs
D	0.5 ac	0.53	0.77	1.1 cfs	2.8 cfs
E	2.3 ac	0.53	0.77	4.7 cfs	13.1 cfs
F	1.6 ac	0.53	0.77	3.2 cfs	9.1 cfs
G	0.5 ac	0.48	0.68	1.1 cfs	2.8 cfs



VICINITY MAP

DRAINAGE PLAN

BAUGHMAN COMPANY P.A.
 SURVEYING & ENGINEERING
 1100 S. W. 10TH ST. WICHITA, KANSAS 67202
 1 MAR 1983



STORM SEWER SYSTEM TO DAYLIGHT AT EAST PROPERTY LINE, THEN RUN EASTERLY IN OPEN DRENCH UNTIL MATCHING EXISTING GRADE

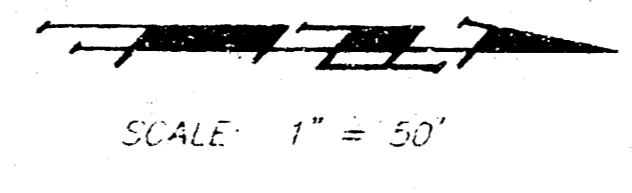
BACKYARD STORM SEWER SYSTEM TO BE INSTALLED IN FUTURE DEVELOPMENT

BACKYARD STORM SEWER SYSTEM TO BE INSTALLED IN FUTURE DEVELOPMENT

STORM SEWER SYSTEM TO DAYLIGHT AT EAST PROPERTY LINE, THEN RUN EASTERLY IN OPEN DRENCH UNTIL MATCHING EXISTING GRADE

NOTE:
Proposed minimum 30" pipe flow elevations are shown on plans. Contractor to set finish floor elevation.
All street elevations shown on plans are for top of curb (full height).
Contour elevations shown are for graphic representation of drainage concept. Spot elevations shall take precedence over contour lines.

BENCHMARKS:
"□" cut in top of curb, E. side Linden, opposite p.c. in Lot 5, Blk 2, Towne Parc 4th Addition
Elevation: = 209.69 City Datum
"□" cut in top of curb, E. side West Parkway 10' ± N. of extended S. Line of Lot 8, Blk 2, Towne Parc 4th Addition
Elevation: = 206.67 City Datum



APPROVED DRAINAGE PLAN

LOT GRADING PLAN
TOWNE PARC FIFTH
BAUGHMAN COMPANY P.A.
ENGINEERING & SURVEYING
1140 W. 10th St., Suite 100, Lincoln, NE 68502
PHONE: (402) 441-1111 FAX: (402) 441-1112
PROJECT NUMBER: 1
DATE: 6-22-93
SCALE: 1" = 50'