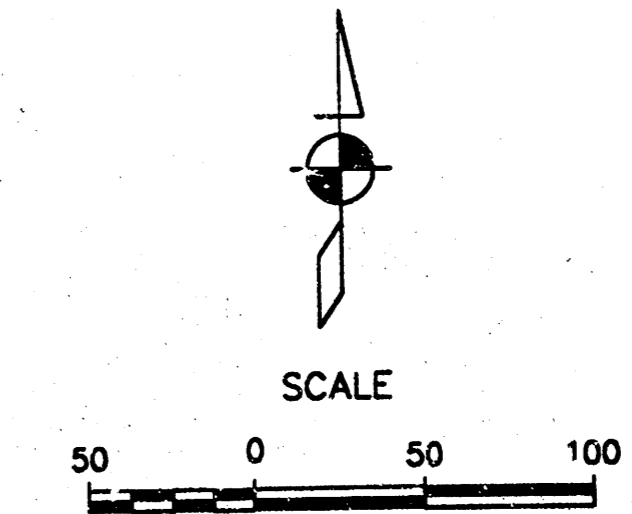
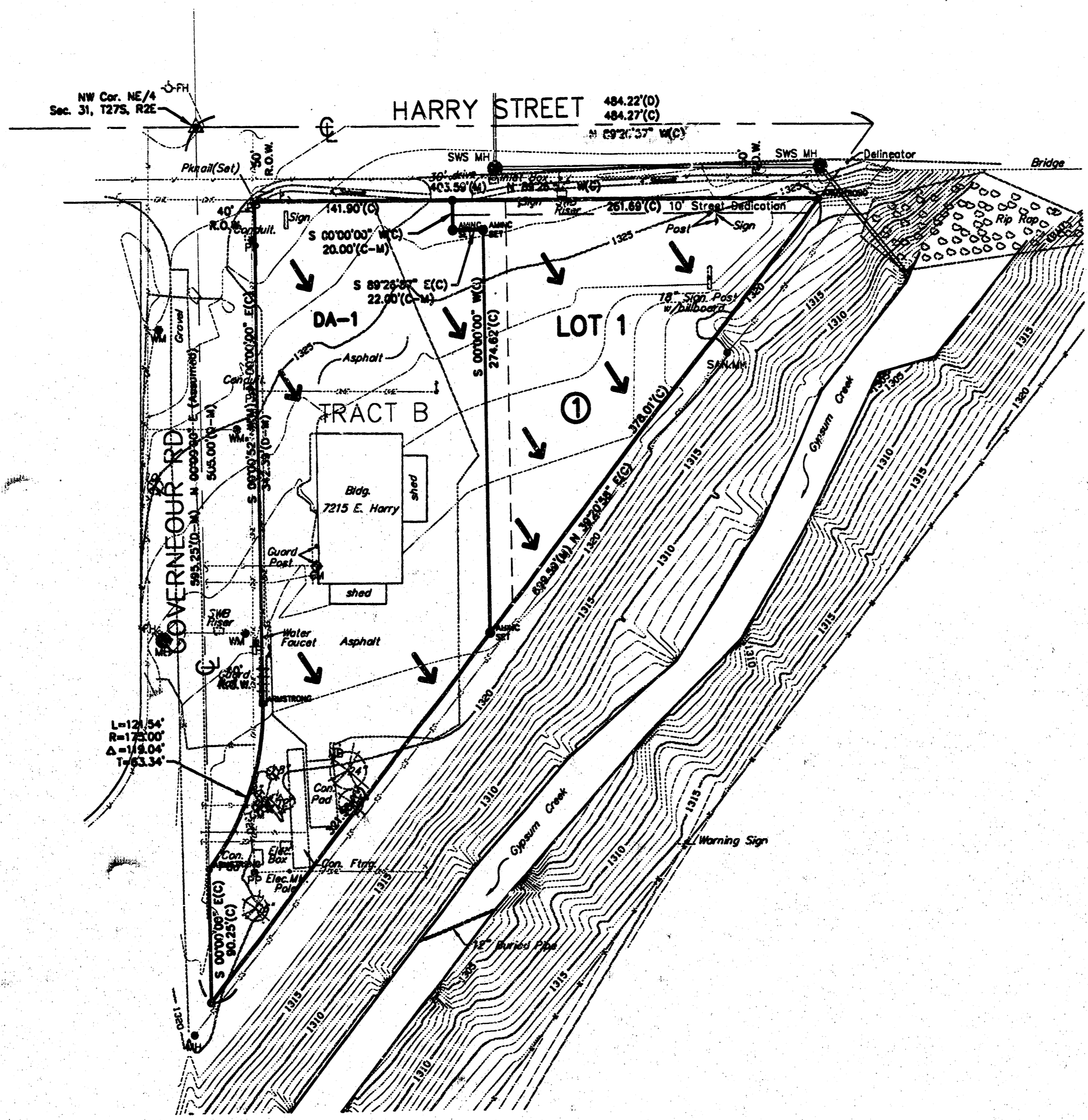


TRAIL-N-SAIL ADDITION DRAINAGE PLAN

WICHITA, SEDGWICK COUNTY, KANSAS



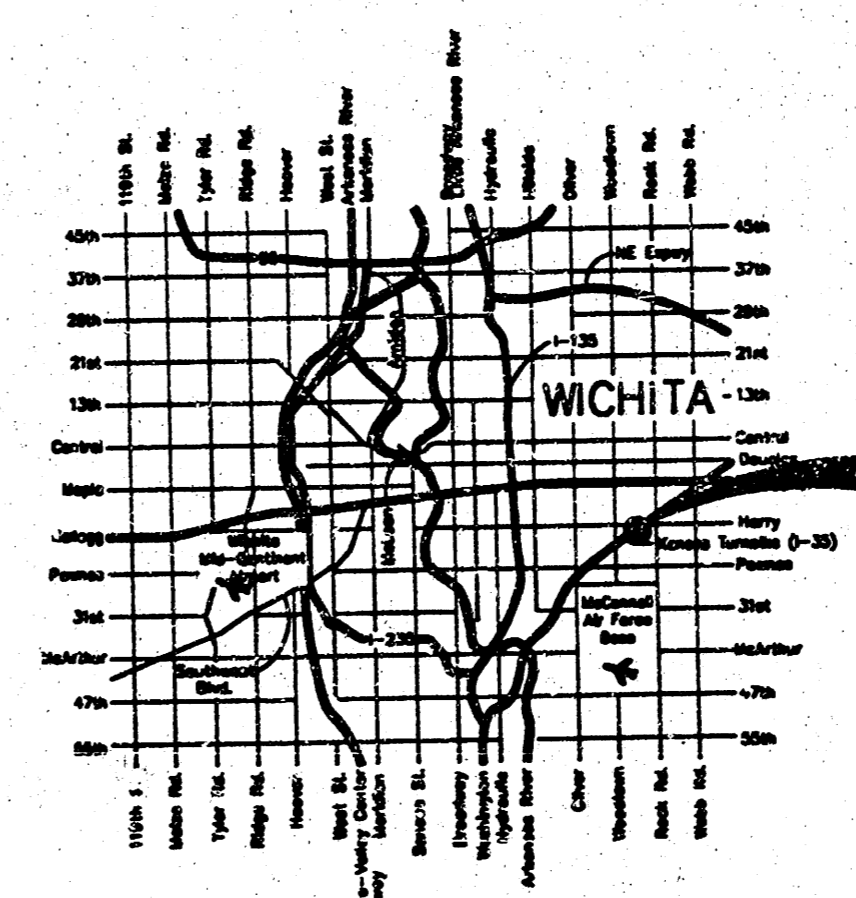
LEGEND

- (C) = Calculated
- (D) = Described
- (M) = Measured
- R.O.W. = Right-of-Way
- = 5/8" Rebar AMNC CLS #104 (set)
- = 5/8" Rebar w/Armstrong Cap(10)
- = PK N#3 (set)
- = PK N#2 (found)
- ▲ = Section Corner
- ⊙ = gas meter
- ⊙ = power pole
- ⊙ = telephone pole
- = down guy
- = sign
- ⊙ = fire hydrant
- ⊙ = mail box
- ⊙ = light pole
- ⊙ = water meter
- = overhead electric
- = fence line
- = underground gas line
- = water line
- = san. sewer line
- ⊙ = tree

Area #	Area (Ac)	S	L	Undeveloped		Developed	
				Q ₁₀₀	Q ₅	Q ₁₀₀	Q ₅
1	2.39	4.58	7.37	3.8	6.2	5.8	8.0
TOTAL	2.39			3.8	6.2	5.8	8.0

NOTES:
 1. Determination of Q's was made using the rational method.
 2. Q's used were as follows:

Run Frequency	Undeveloped	Developed
100 yr Frequency	.35	.51
5 yr Frequency	.35	.31



VICINITY MAP

BENCHMARK
 Woodlawn and 17th St. North
 C.O.W. Benchmark, 43' West and
 32' South of centerline both.
 Elev. 216.44 city datum, 1403.84 MSL.

SITE

A.M. CONSULTING
ENGINEERING SERVICES
 143 N. Emporia, Wichita, KS 67202
 316/262-2870 Fax 316/262-2838

E:\projects\197061\197061-02\197061-02-drainage.dwg Tue Jun 08 10:45:47 2004 Matt Perez