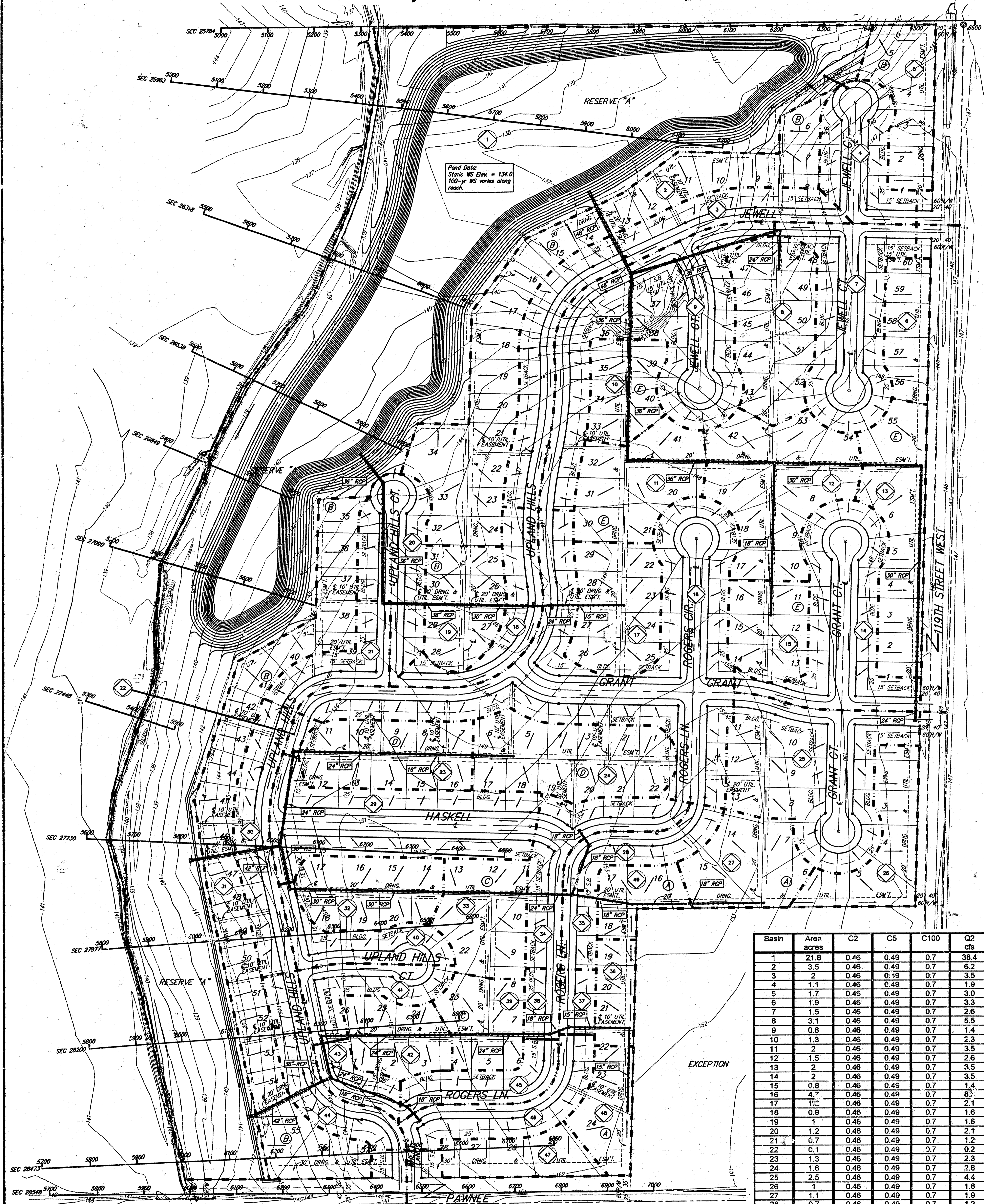


DRAINAGE PLAN

TURKEY CREEK 2ND ADDITION

WICHITA, SEDGWICK COUNTY, KANSAS



Basin	Area acres	C2	C5	C100	Q2 cfs	Q5 cfs	Q100 cfs
1	21.8	0.46	0.49	0.7	38.4	48.7	112.5
2	3.5	0.46	0.49	0.7	6.2	7.8	18.1
3	1.1	0.46	0.49	0.7	1.9	2.5	5.7
4	1.7	0.46	0.49	0.7	3.0	3.8	8.8
5	1.9	0.46	0.49	0.7	3.3	4.2	9.8
6	1.5	0.46	0.49	0.7	2.6	3.4	7.7
7	3.1	0.46	0.49	0.7	5.5	6.9	16.0
8	0.8	0.46	0.49	0.7	1.4	1.8	4.1
9	1.3	0.46	0.49	0.7	2.3	2.9	6.7
10	2	0.46	0.49	0.7	3.5	4.5	10.3
11	1.5	0.46	0.49	0.7	2.6	3.4	7.7
12	2	0.46	0.49	0.7	3.5	4.5	10.3
13	2	0.46	0.49	0.7	3.5	4.5	10.3
14	0.8	0.46	0.49	0.7	1.4	1.8	4.1
15	4.7	0.46	0.49	0.7	8.3	10.5	24.2
16	1	0.46	0.49	0.7	1.8	2.2	5.2
17	0.9	0.46	0.49	0.7	1.6	2.0	4.8
18	1	0.46	0.49	0.7	1.8	2.2	5.2
19	1.2	0.46	0.49	0.7	2.1	2.7	6.2
20	0.7	0.46	0.49	0.7	1.2	1.6	3.6
21	0.1	0.46	0.49	0.7	0.2	0.2	0.5
22	1.3	0.46	0.49	0.7	2.3	2.9	6.7
23	1.6	0.46	0.49	0.7	2.8	3.6	8.3
24	2.5	0.46	0.49	0.7	4.4	5.6	12.9
25	1	0.46	0.49	0.7	1.8	2.2	5.2
26	1.1	0.46	0.49	0.7	1.9	2.5	5.7
27	0.7	0.46	0.49	0.7	1.2	1.6	3.6
28	2.2	0.46	0.49	0.7	3.9	4.9	11.3
29	1.1	0.46	0.49	0.7	1.9	2.5	5.7
30	3.4	0.46	0.49	0.7	6.0	7.6	17.5
31	1.1	0.46	0.49	0.7	1.9	2.5	5.7
32	1.1	0.46	0.49	0.7	1.9	2.5	5.7
33	1.1	0.46	0.49	0.7	1.9	2.5	5.7
34	1.1	0.46	0.49	0.7	1.9	2.5	5.7
35	0.3	0.46	0.49	0.7	0.5	0.7	1.5
36	0.5	0.46	0.49	0.7	0.9	1.1	2.6
37	0.3	0.46	0.49	0.7	0.5	0.7	1.5
38	0.3	0.46	0.49	0.7	0.5	0.7	1.5
39	0.8	0.46	0.49	0.7	1.4	1.8	4.1
40	0.7	0.46	0.49	0.7	1.2	1.6	3.6
41	0.8	0.46	0.49	0.7	1.4	1.8	4.1
42	0.8	0.46	0.49	0.7	1.4	1.8	4.1
43	0.4	0.46	0.49	0.7	0.7	0.9	2.1
44	0.9	0.46	0.49	0.7	1.6	2.0	4.6
45	0.7	0.46	0.49	0.7	1.2	1.6	3.6
46	0.9	0.46	0.49	0.7	1.6	2.0	4.6
47	0.7	0.46	0.49	0.7	1.2	1.6	3.6
48	0.7	0.46	0.49	0.7	1.2	1.6	3.6
49	0.6	0.46	0.49	0.7	1.1	1.3	3.1

Section	Existing WS Elev.	Proposed WS Elev.
25654	138.6	138.6
25707	138.7	138.7
25757	138.9	138.9
25784	139.0	139.0
25963	140.2	139.4
26318	141.1	138.5
26638	141.7	139.8
26849	142.0	140.0
27090	142.6	140.4
27448	143.2	141.7
27730	143.7	143.4
27977	144.0	143.8
28200	144.1	144.0
28473	144.4	144.3
28548	144.4	144.4

MINIMUM BUILDING PAD ELEVATIONS FOR LOWEST OPENING TO THE STRUCTURES		
LUT	BLOCK	ELEVATION CITY DATUM
5-7	B	140.0
9-17	B	141.2
35-37	B	143.0
40-43	B	143.6
44-46	B	144.2
47-49	B	144.7
50-52	B	145.0
53-55	D	145.1

BENCHMARK: 119TH ST. W. & PAWNEE CITY OF WICHITA BENCHMARK DISC THE CORNER OF INTERSECTION 40.00' E. OF E. 30.00' N. OF E. 59.50' N. OF P.P. AT SE COR. HEADWELL ON CULVERT UNDER 119TH ST. W. ELEV. = 148.88 CITY DATUM (PER COUNTY RECORD)

NOTE: A master grading plan for drainage has been developed for this subdivision and is on file with the City of Wichita, Kansas. All drainage easements, right-of-ways, or reserves shall remain at established grades or as modified with the approval of the City Engineer of the City of Wichita, Kansas. No obstructions which impede the flow of this drainage system be allowed.

DATE OF PREPARATION: 9 FEBRUARY 2004

NOTE: Grading and Stormwater Sewer Calculations were previously submitted with "Turkey Creek Addition Drainage Plan". No alterations to grading, stormwater sewer alignment, or stormwater sewer sizes are proposed.