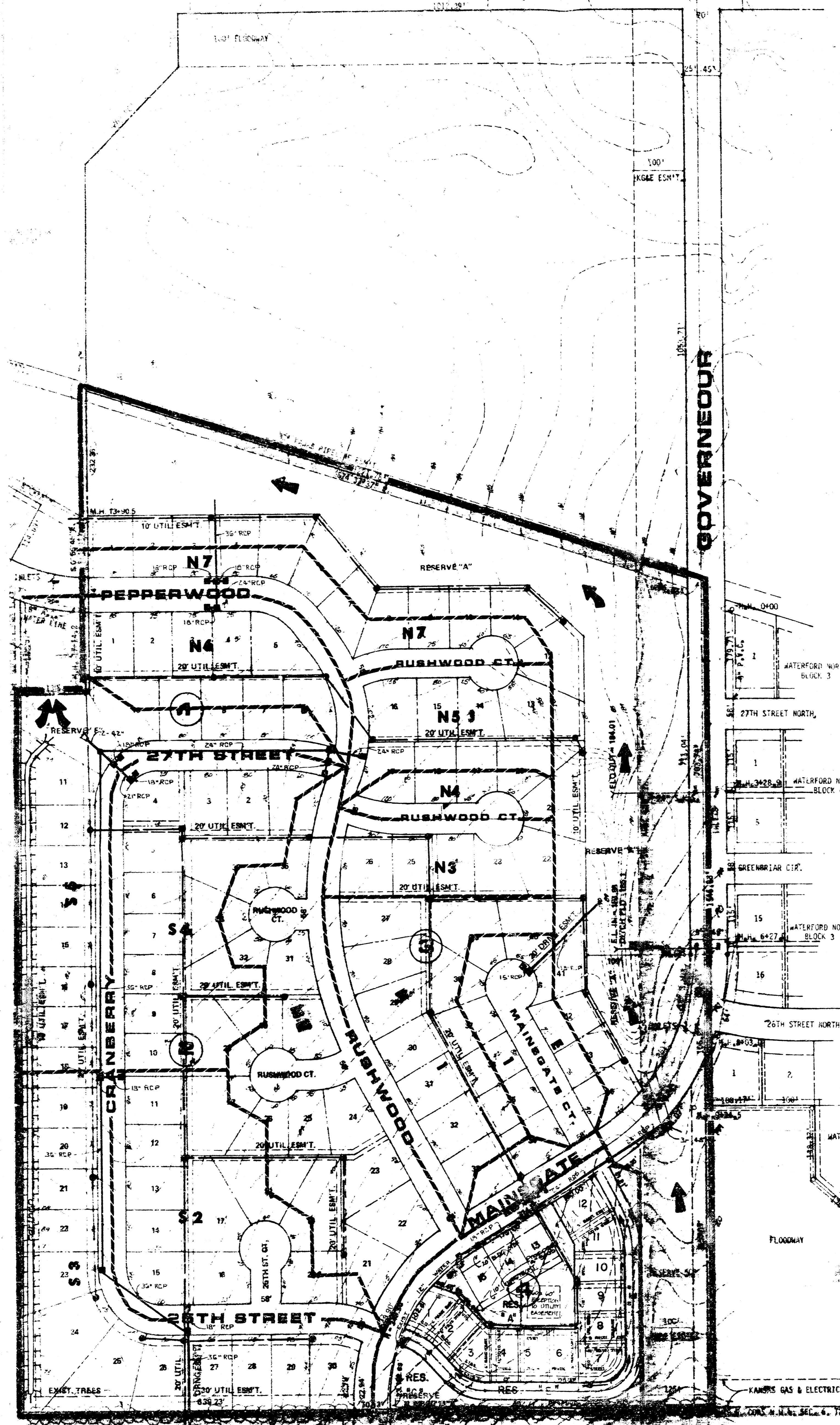
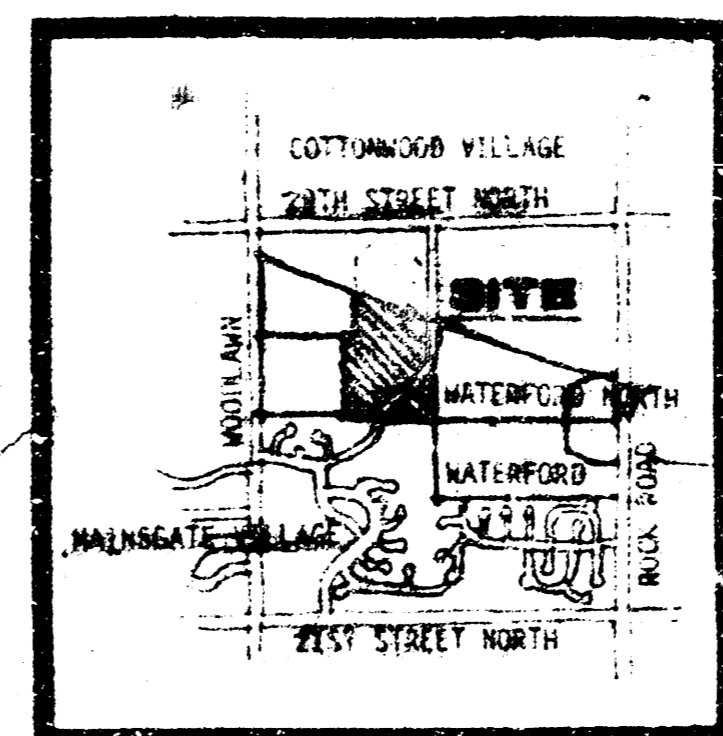


29TH STREET NORTH



EXISTING SANITARY SEWER

M.H. 0400 TOP ELEV. 186.22 F.L. 182.31
 M.H. 3428.9 TOP ELEV. 192.4 F.L. 188.12
 M.H. 0427.7 TOP ELEV. 192.4 F.L. 181.21
 M.H. 0402.0 TOP ELEV. 192.8 F.L. 184.37
 M.H. 0428.9 TOP ELEV. 194.8 F.L. 188.70
 M.H. 214 TOP ELEV. 196.6 F.L. 186.06 GUTTER 06 IN
 M.H. 3447.2 TOP ELEV. 196.0 F.L. 187.6
 M.H. 2487 TOP ELEV. 172.5 F.L. 163.88 IN 167.78 OUT
 M.H. 2482.5 TOP ELEV. 172.5 F.L. 163.88 IN 167.78 OUT
 M.H. 1244.9 TOP ELEV. 175.4 F.L. 166.09 IN 165.99 OUT
 M.H. 1714.2 TOP ELEV. 176.8 F.L. 167.98 IN 167.39 OUT
 M.H. 1854.7 TOP ELEV. 176.8 F.L. 168.05 IN 167.39 OUT



LOCATION MAP

NOTES: SETBACKS ARE AS PER CITY ORDINANCES
 GENERAL PROVISIONS MAP 501
 RESERVES ARE FOR DRAINAGE UTILITIES, OPEN SPACE, RECREATION AND LANDSCAPING



VILLAGE AT WATERFORD
 WATERFORD NORTH THIRD ADDITION

DRAINAGE PLAN

REVISED - April 24, 1989

MID-KANSAS ENGINEERING CONSULTANTS PA
 3500 NORTH ROCK ROAD
 BUILDING #800
 WICHITA, KANSAS 67226
 636-6566