



**MID-KANSAS ENGINEERING
CONSULTANTS, P.A.**
3500 N. Rock Road, #800
Wichita, KS 67226
(316) 636-5566

LETTER OF TRANSMITTAL

PROJECT: Webb Road Development Addition

PROJECT #: _____ DATE: 07/27/01

TO: Vicky Brand, P.E.
City of Wichita
Engineering Department
444 N. Main, 16th Floor
Wichita, KS 67201

We are sending the following items: Attached
 Under separate cover via _____

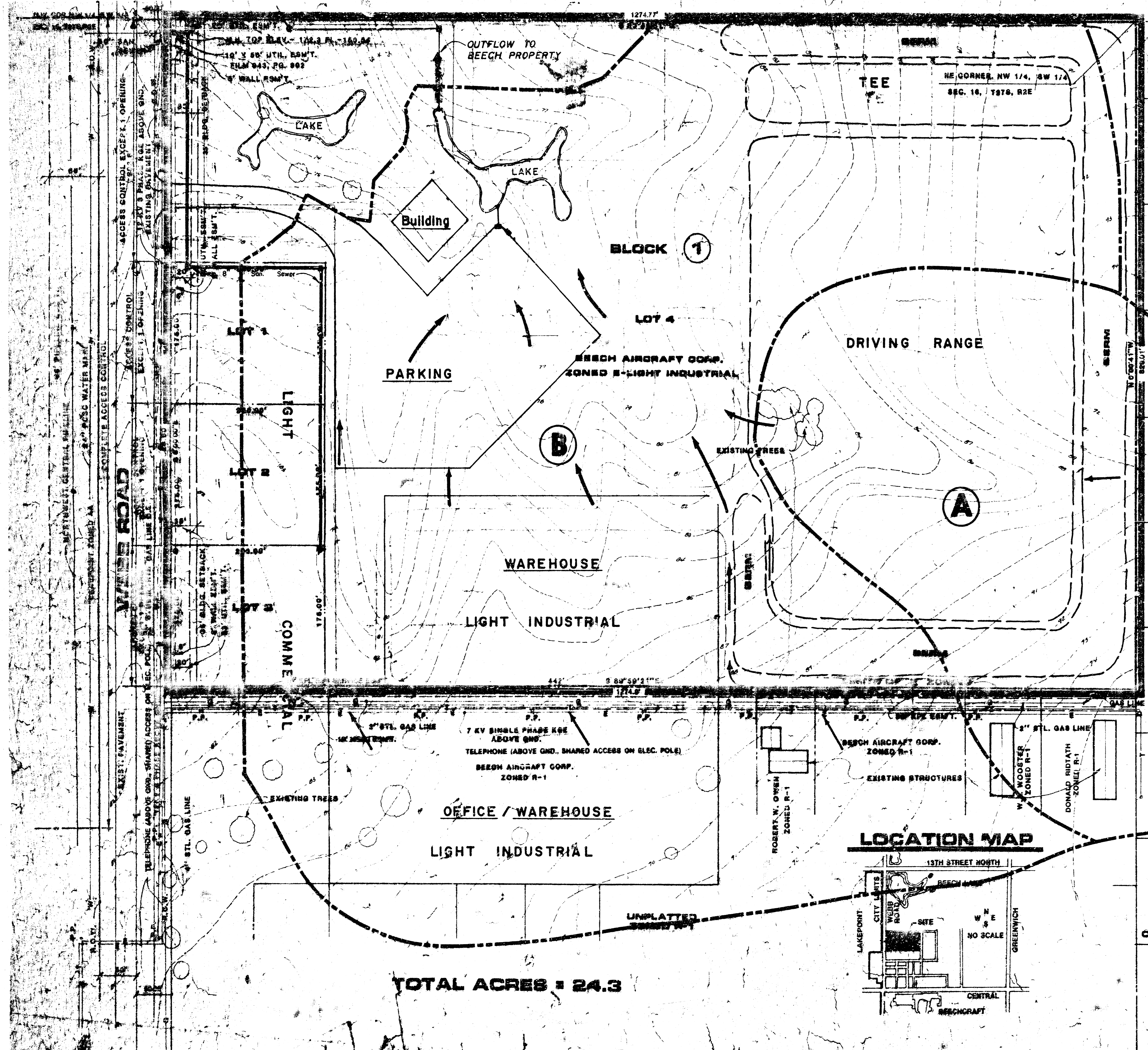
Prints Specifications Legal Descriptions
 Tracings Petitions Correspondence Other

COMMENTS: 1 - Drainage & Utility plan for Webb Road Development Addition.
 2 - Drainage & Utility plan for East Side Development.

For our Approval As Requested
 For Your Use For Your Files
 Approved as Noted For Review and Comment

REMARKS:

Signed: *Benny Segen*
Benny Segen



NOTES

PRELIMINARY TOPOGRAPHY PREPARED BY DOBLER SURVEYING AND ENGINEERING DEC. 1987

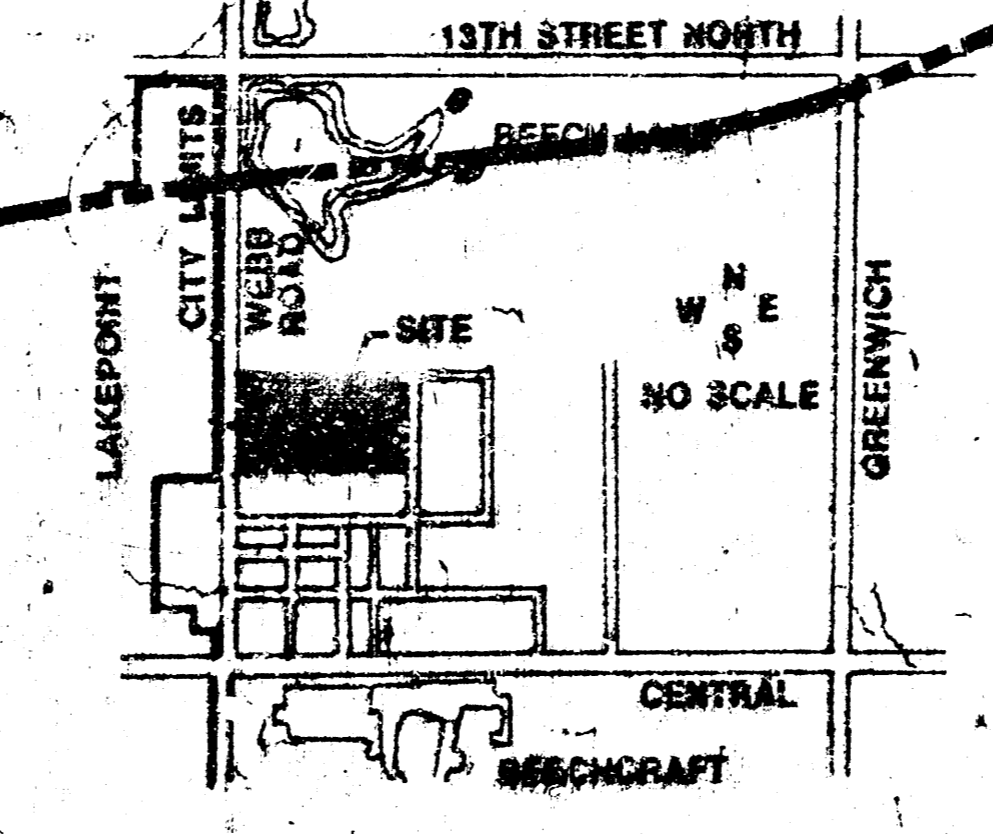
DRAINAGE STUDY PREPARED BY MID-KANSAS ENGINEERING CONSULTANTS P.A.

BENCHMARK:

Drainage Area	AREA ACRES	AREA ACFT.	C ₁	C ₂	C ₃	C ₄	C ₅	C ₆	C ₇	C ₈	C ₉	C ₁₀	C ₁₁	C ₁₂	C ₁₃	C ₁₄	C ₁₅	C ₁₆	C ₁₇	C ₁₈	C ₁₉	C ₂₀	C ₂₁	C ₂₂	C ₂₃	C ₂₄	C ₂₅	C ₂₆	C ₂₇	C ₂₈	C ₂₉	C ₃₀	C ₃₁	C ₃₂	C ₃₃	C ₃₄	C ₃₅	C ₃₆	C ₃₇	C ₃₈	C ₃₉	C ₄₀	C ₄₁	C ₄₂	C ₄₃	C ₄₄	C ₄₅	C ₄₆	C ₄₇	C ₄₈	C ₄₉	C ₅₀	C ₅₁	C ₅₂	C ₅₃	C ₅₄	C ₅₅	C ₅₆	C ₅₇	C ₅₈	C ₅₉	C ₆₀	C ₆₁	C ₆₂	C ₆₃	C ₆₄	C ₆₅	C ₆₆	C ₆₇	C ₆₈	C ₆₉	C ₇₀	C ₇₁	C ₇₂	C ₇₃	C ₇₄	C ₇₅	C ₇₆	C ₇₇	C ₇₈	C ₇₉	C ₈₀	C ₈₁	C ₈₂	C ₈₃	C ₈₄	C ₈₅	C ₈₆	C ₈₇	C ₈₈	C ₈₉	C ₉₀	C ₉₁	C ₉₂	C ₉₃	C ₉₄	C ₉₅	C ₉₆	C ₉₇	C ₉₈	C ₉₉	C ₁₀₀																																																																																																																																						
AREA A	10.81	(0.1169)	0.35	0.65	37	22	2.04	6.76	16.90	43.99	111.94	180.33	231.85	274.88	317.50	359.71	401.51	442.91	483.91	524.51	564.71	604.51	643.91	682.91	721.51	759.71	797.51	834.91	871.91	908.51	944.71	980.51	1015.91	1050.91	1085.51	1119.71	1153.51	1186.91	1219.91	1252.51	1284.71	1316.51	1347.91	1378.91	1409.51	1439.71	1469.51	1498.91	1527.91	1556.51	1584.71	1612.51	1640.91	1668.91	1696.51	1723.71	1750.51	1776.91	1802.91	1828.51	1853.71	1878.51	1902.91	1926.91	1950.51	1973.71	1996.51	2018.91	2040.91	2062.51	2083.71	2104.51	2124.91	2144.91	2164.51	2183.71	2202.51	2220.91	2238.91	2256.51	2273.71	2290.51	2306.91	2322.91	2338.51	2353.71	2368.51	2382.91	2396.91	2410.51	2423.71	2436.51	2448.91	2460.91	2472.51	2483.71	2494.51	2504.91	2514.91	2524.51	2533.71	2542.51	2550.91	2558.91	2566.51	2573.71	2580.51	2586.91	2592.91	2598.51	2603.71	2608.51	2612.91	2616.91	2620.51	2623.71	2626.51	2628.91	2630.91	2631.91	2632.51	2632.91	2632.91	2632.51	2631.91	2630.91	2628.91	2626.51	2623.71	2620.51	2616.91	2612.91	2608.51	2603.71	2598.51	2592.91	2586.91	2580.51	2573.71	2566.51	2558.91	2550.91	2542.51	2533.71	2524.51	2514.91	2504.91	2494.51	2483.71	2472.51	2460.91	2448.91	2436.51	2423.71	2410.51	2396.91	2382.91	2368.91	2353.71	2338.51	2322.91	2306.91	2290.51	2273.71	2256.51	2238.91	2220.91	2202.51	2183.71	2164.51	2144.91	2124.91	2104.51	2083.71	2062.51	2040.91	2018.91	1996.51	1973.71	1950.51	1926.91	1902.91	1878.51	1853.71	1828.51	1802.91	1776.91	1750.51	1723.71	1696.51	1668.91	1640.91	1612.91	1584.71	1556.51	1527.91	1498.91	1469.51	1439.71	1409.51	1378.91	1347.91	1316.51	1284.71	1252.51	1219.91	1186.91	1153.51	1119.71	1085.51	1050.91	1015.91	980.51	944.71	908.51	871.91	834.91	797.51	759.71	721.51	682.91	643.91	604.51	564.71	524.51	483.91	442.91	401.51	359.71	317.51	274.88	231.85	180.33	131.94	83.99	43.99

LYNCH ADDITION
ZONED R-1

LOCATION MAP

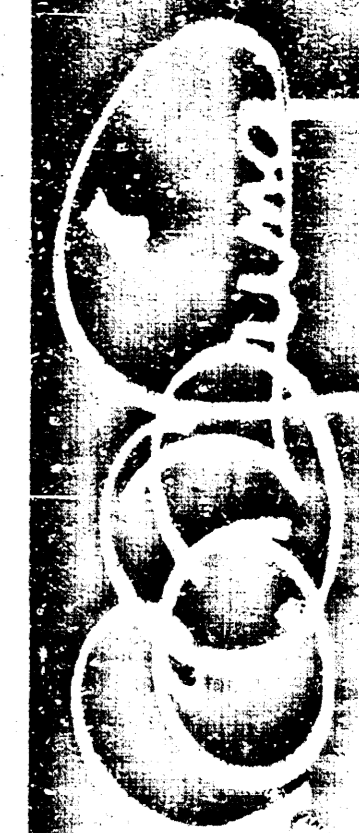


SCALE 1" = 50'
CONTOUR INTERVAL = 1'

- LEGEND**
- DRAINAGE DIVIDE
 - PROP. SAN. SEWER - 8" (BY PETITION)
 - PROP. SEWER SEWER (PRIVATE)
 - DRAINAGE ARROWS

DRAINAGE & UTILITY PLAN
EAST SIDE DEVELOPMENT

OWNER: BEECH AIRCRAFT CORP. P.O. BOX 80 WICHITA, KS. 67201



project EAST SIDE DEVELOPMENT sheet title PRELIMINARY PLAN date MAY 30, 1988 rev. 1
 BILL G. YUNG DEBIL
 4012 E. 28TH STREET NORTH, WICHITA, KS. 67220