

PROFESSIONAL  
ENGINEERING CONSULTANTS, PA  
303 South Topeka  
WICHITA, KANSAS 67202

LETTER OF TRANSMITTAL

(318) 282-2691

TO VICKY HUANG, P.E.  
ENGINEERING DEPT  
7TH FLOOR, CITY HALL

DATE	JOB NO.
<u>10-19-95</u>	<u>36-95136-2108</u>
ATTENTION	
<u>WELLEY MEDICAL CENTER</u>	
<u>5TH ADD.</u>	

WE ARE SENDING YOU  Attached  Under separate cover via \_\_\_\_\_ the following items:

- Shop drawings     Prints     Plans     Samples     Specifications  
 Copy of letter     Change order     \_\_\_\_\_

COPIES	DATE	NO	DESCRIPTION
<u>2</u>			<u>DRAINAGE PLAN</u>

THESE ARE TRANSMITTED as checked below:

- For approval     Approved as submitted     Resubmit \_\_\_\_\_ copies for approval  
 For your use     Approved as noted     Submit \_\_\_\_\_ copies for distribution  
 As requested     Returned for corrections     Return \_\_\_\_\_ corrected prints  
 For review and comment     \_\_\_\_\_  
 FOR BIDS DUE \_\_\_\_\_ 19 \_\_\_\_\_     PRINTS RETURNED AFTER LOAN TO US

REMARKS \_\_\_\_\_  
 \_\_\_\_\_  
 \_\_\_\_\_  
 \_\_\_\_\_  
 \_\_\_\_\_  
 \_\_\_\_\_  
 \_\_\_\_\_  
 \_\_\_\_\_

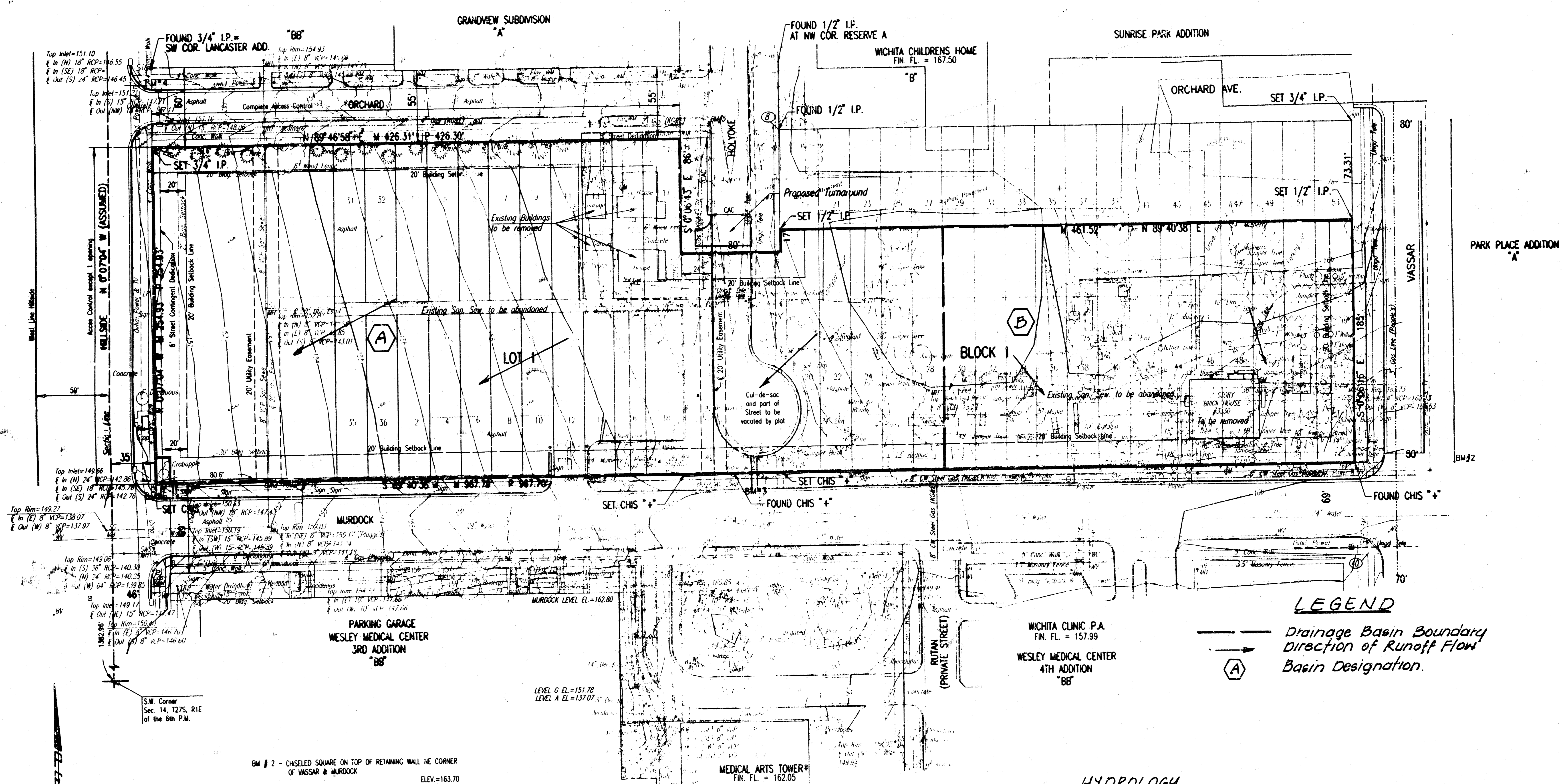
COPY TO FILE \_\_\_\_\_ SIGNED: GARY WILEY

If enclosures are not so noted, kindly notify us at once.

**DRAINAGE PLAN OF  
WESLEY MEDICAL CENTER  
5TH ADDITION**

**OWNER: H.C.A. HEALTH SERVICES OF KANSAS, INC.  
c/o THOMAS L. NESTER  
550 N. HILLSIDE  
WICHITA, KANSAS 67218**

**ENGINEER: PROFESSIONAL ENGINEERING CONSULTANTS, P.A.  
303 S. TOPEKA  
WICHITA, KANSAS 67202**



**LEGEND**

— Drainage Basin Boundary  
 → Direction of Runoff Flow  
 (A) Basin Designation.

WICHITA CLINIC P.A.  
FIN. FL. = 157.99  
 WESLEY MEDICAL CENTER  
4TH ADDITION  
"BB"

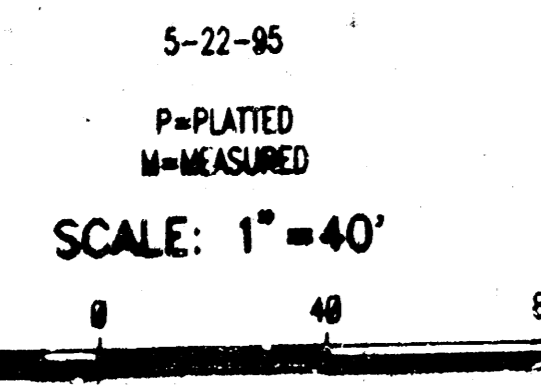
**HYDROLOGY**

BASIN	AREA(Ac)	C <sub>2</sub>	C <sub>100</sub>	i <sub>2</sub>	i <sub>100</sub>	Q <sub>2</sub> (cfs)	Q <sub>100</sub> (cfs)
A	3.47	0.74*	0.84*	3.80	7.36	0.7	21.5
B	1.40	0.87*	0.89†	3.80	7.36	4.6	9.2

\* Based on Parking Lot usage  
 † Based on Heavy Institutional Usage (80% Impervious)

*Drainage shall be routed to public streets or storm sewers via drives, parking lots, flumes, private storm water sewers, or other approved drainage devices. Structures, fences, walls, etc. which obstruct overland drainage shall not be permitted.*

- BM # 2 - CHISELED SQUARE ON TOP OF RETAINING WALL NE CORNER OF VASSAR & MURDOCK  
ELEV. = 163.70
- BM # 3 - CHISELED SQUARE ON TOP OF CURB SW FLUME AT HOLYOKE AND MURDOCK  
ELEV. = 160.84
- BM # 4 - CHISELED SQUARE ON TOP OF CURB SW CORNER WHEELCHAIR RAMP AT NE CORNER OF ORCHARD AND HILLSIDE  
ELEV. = 151.12
- BM # 5 - CHISELED SQUARE ON TOP OF CURB NE CORNER WHEELCHAIR RAMP AT SW CORNER OF HOLYOKE AND ORCHARD  
ELEV. = 163.00
- BM # 6 - CHISELED SQUARE ON NW CORNER TRAFFIC SIGNAL POLE BASE AT SW CORNER OF HILLSIDE AND MURDOCK  
ELEV. = 150.04



5-22-95  
 P=PLATTED  
 M=MEASURED  
 SCALE: 1" = 40'  
 48 0 40 96