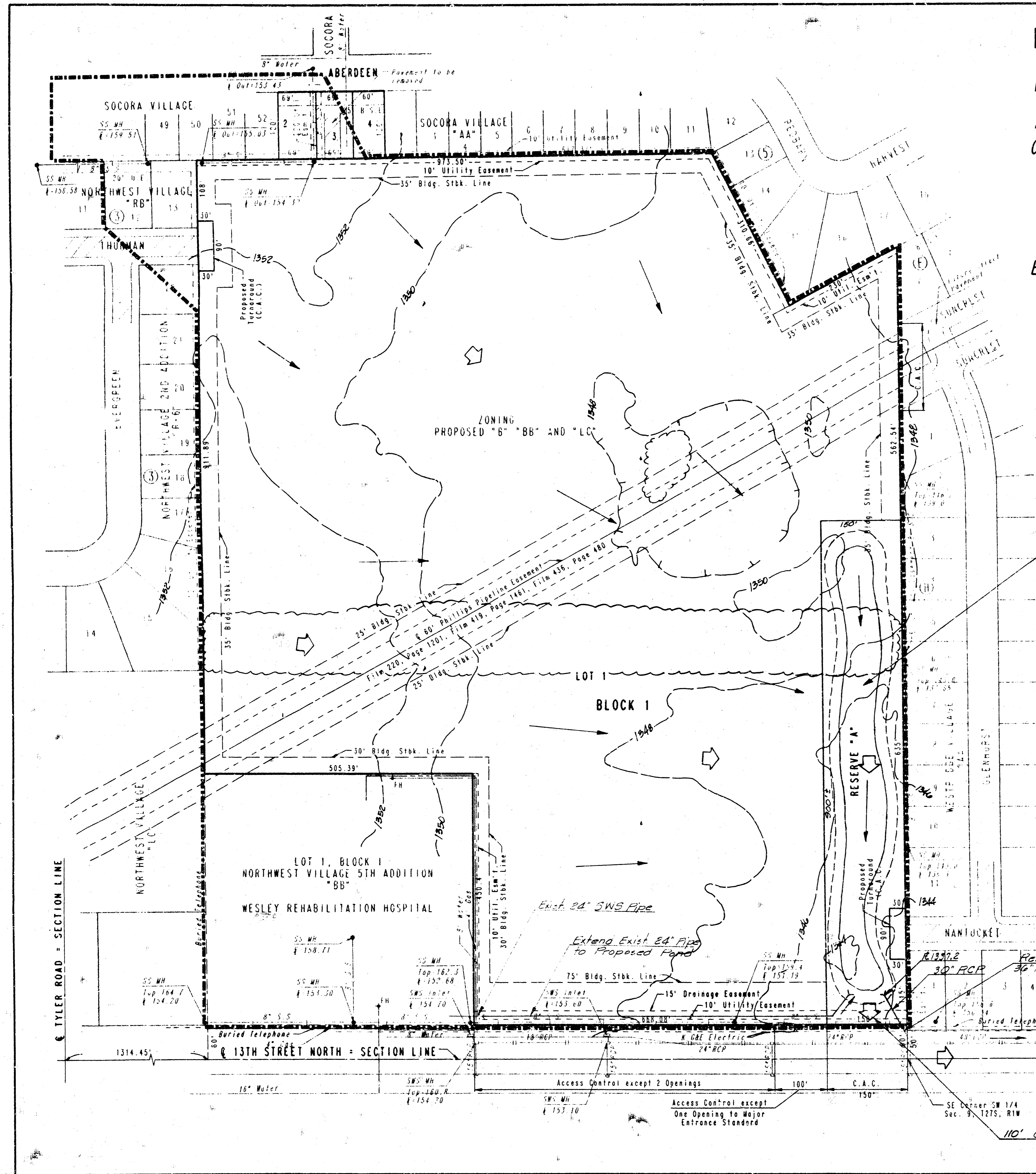


DRAINAGE PLAN 4/95
WESLEY WEST ADDITION
TO WICHITA, SEDGWICK COUNTY, KANSAS
 OWNER: HCA HEALTH SERVICES OF KANSAS INC.
 c/o COLUMBIA/HCA
 c/o THOMAS W. HULME
 P.O. BOX 550
 NASHVILLE, TENNESSEE 37202-0550

ENGINEER: PROFESSIONAL ENGINEERING CONSULTANTS, P.A.
 303 S. TOPEKA
 WICHITA, KANSAS 67202



LEGEND

→ Direction of Minor Flow
 → Direction of Major Flow
 --- Drainage Basin Boundary

Prop. Detention Basin
 Static Pool = 1337.2
 DWS₁₀₀ = 1343.30
 S.A. @ 1337.2' = 1.25 ac.
 S.A. @ 1343.7' = 2.00 ac.

SCALE: 1"=100'
 FEBRUARY, 1995

C.A.C. = COMPLETE ACCESS CONTROL

EXISTING STREET PAVEMENT

B.M. - CITY OF WICHITA DISC 48 FEET EAST AND 48 FEET NORTH OF THE INTERSECTION OF THE CENTERLINES OF 13TH STREET NORTH AND TYLER ROAD. ELEV. 169.929 CITY DATUM

TOPOGRAPHY DATE: NOVEMBER, 1979

NOTE: CONTOUR ELEVATION DATA - M.S.L. ELEVATIONS OF SANITARY SEWER MANHOLES AND STORM SEWER INLETS - CITY DATUM.

RESERVE "A" SHALL BE UTILIZED FOR A STORM WATER RETENTION/DEFLECTION SYSTEM, UTILITIES CONFINED TO EASEMENTS, ESCAPING AND PEDESTRIAN IMPROVEMENTS.

FOR ADDITIONAL BUILDING SETBACKS SEE CUP DP-217 ON FILE WITH THE WICHITA-SEDGWICK COUNTY METROPOLITAN AREA PLANNING DEPARTMENT.

Note: All site drainage to be carried overland or in storm sewer to proposed detention basin in Reserve "A".

110' Overflow @ 1343.7