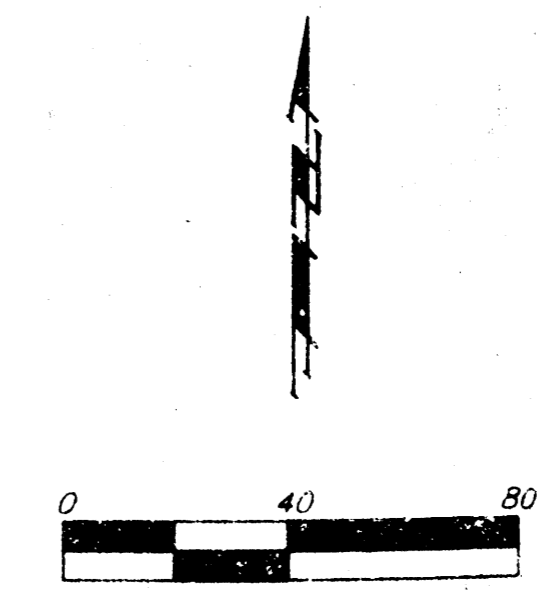


# DRAINAGE PLAN WESTGATE VILLAGE 2ND ADDITION WICHITA, SEDGWICK COUNTY, KANSAS



**LEGAL DESCRIPTION:**  
LOTS 1 AND 2, WESTGATE VILLAGE ADDITION,  
WICHITA, KANSAS

**OWNERS:**  
WESTGATE VILLAGE  
2804 FAIRWAY  
WICHITA, KANSAS 67212  
  
KERR-MAGE CORP.  
ATTN: TAX DEPARTMENT  
P.O. BOX 29861  
OKLAHOMA CITY, OKLAHOMA 73115

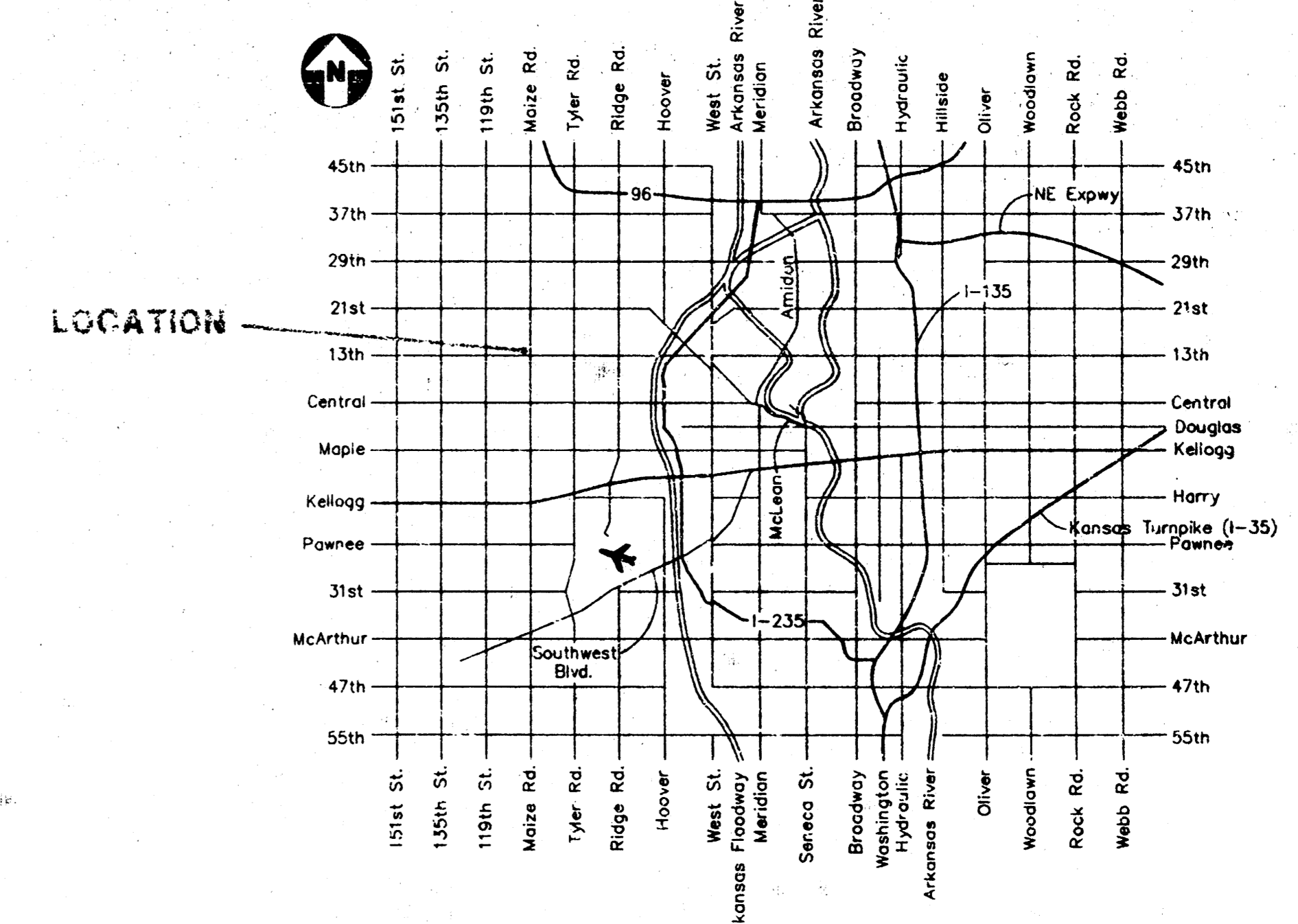
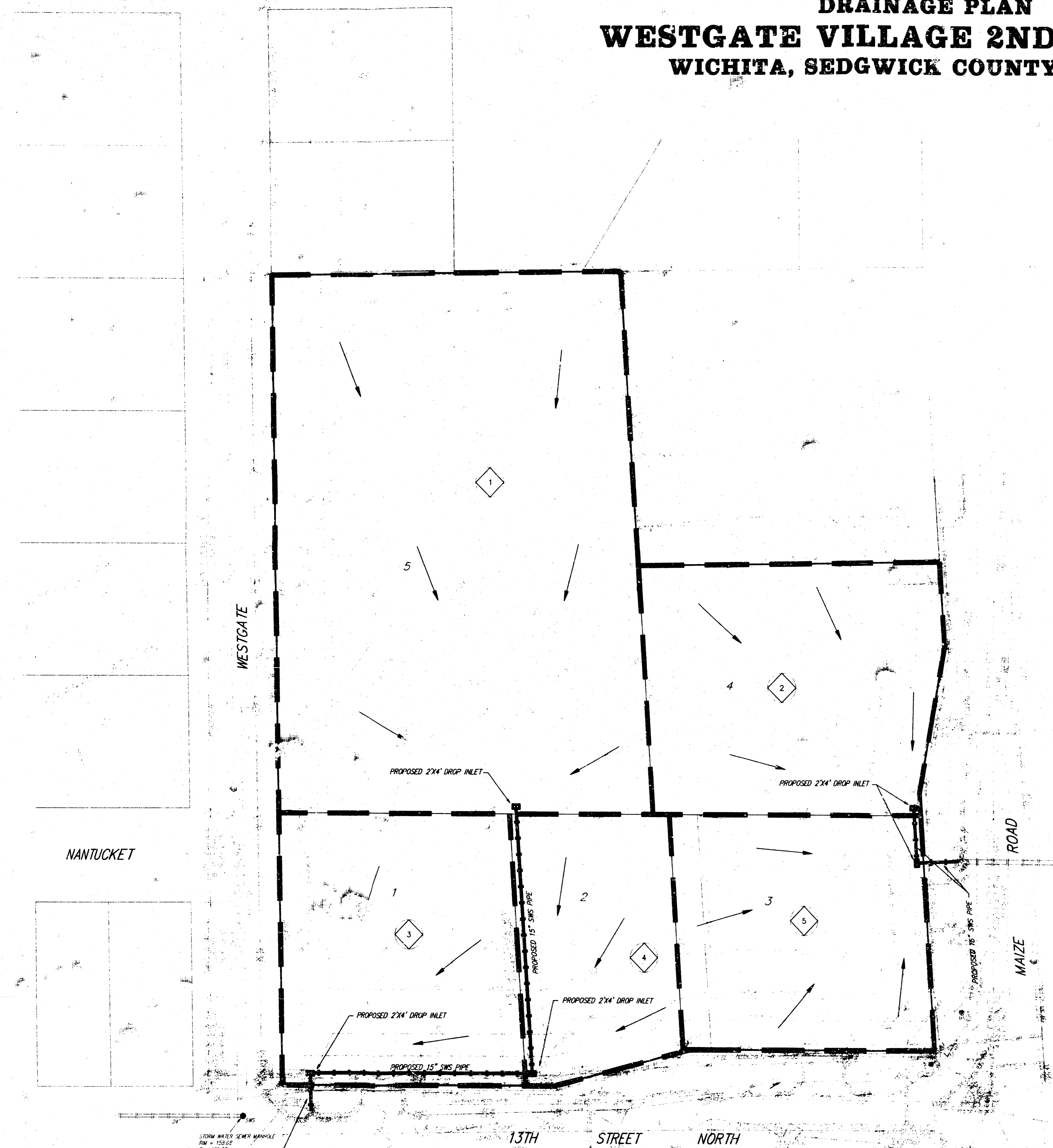
**BENCHMARK:**  
CITY OF WICHITA BENCH MARK - DISC  
109.50 FEET NORTH AND 71 FEET WEST  
OF THE CENTER LINE OF MAIZE ROAD  
AND 13TH STREET, 2 FEET EAST OF  
EAST FACE OF WALK  
ELEVATION = 160.02 CITY DATUM

**LEGEND:**

- X = Basin Identifier
- = Basin Boundary

- = 1/2" IRON (FOUND)
- = #4 BAUGHMAN PIN (SET)
- △ = V-NOTCH FOUND
- △ = MM V-NOTCH FOUND
- X = CROSS (FOUND)
- ⊙ = 12" IRON (FOUND)
- CB = Catch Basin
- DR = Diameter
- FH = Fire Hydrant
- GP = Guy Pole
- GA = Guy Anchor
- HL = High Line Pole
- SP = Signal Pole
- SG = Sign
- SSMH = Sanitary Sewer Manhole
- SW Ped = Southwestern Bell Pedestal
- SSMH = Stormwater Sewer Manhole
- TB = Traffic Box
- TMI = Traffic Manhole
- WV = Water Valve

Drainage Area	Area (Acres)	C <sub>s</sub>	C <sub>w</sub>	T <sub>1</sub> (min.)	T <sub>2</sub> (hr/hr)	Q <sub>1</sub> (cfs)	Q <sub>2</sub> (cfs)
1	2.2	0.90	0.90	15	3.83	7.36	14.6
2	0.8	0.90	0.90	15	3.83	7.36	2.8
3	0.7	0.90	0.90	15	3.83	7.36	2.4
4	0.5	0.90	0.90	15	3.83	7.36	1.7
5	0.7	0.90	0.90	15	3.83	7.36	2.4



PROPOSED 15" SWS PIPE  
PROPOSED 2x4' DROP INLET  
13TH STREET NORTH