

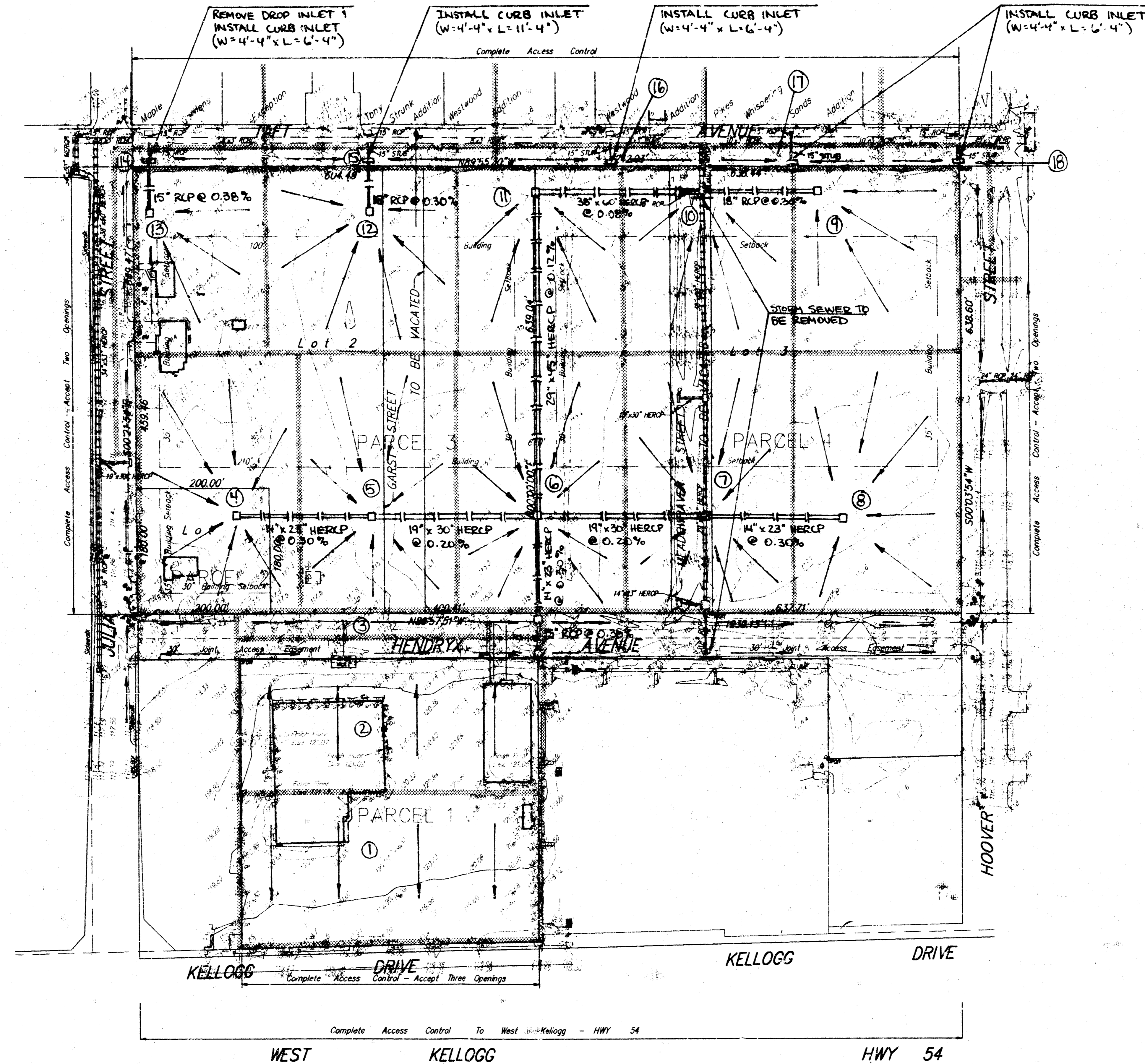
DRAINAGE PLAN

WEST KELLOGG POWER CENTER

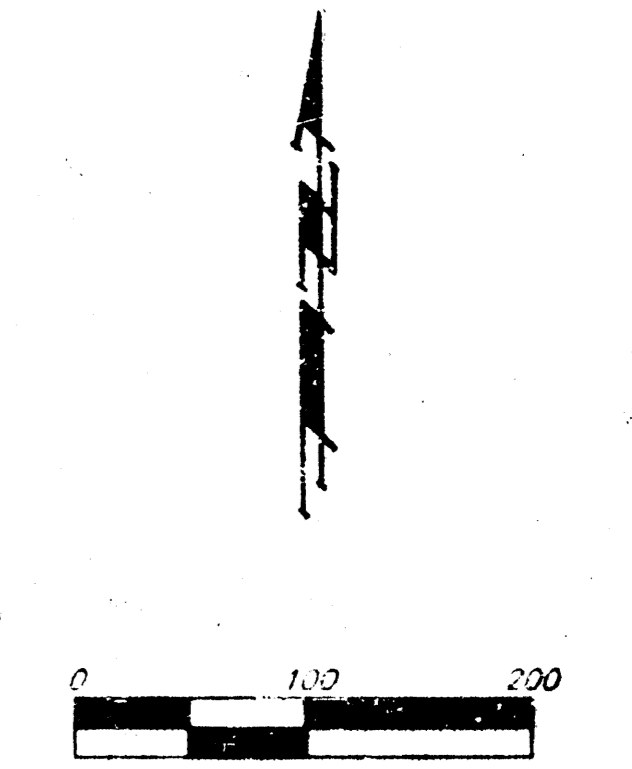
WICHITA, SEDGWICK COUNTY, KANSAS

DRAINAGE DATA

SUB-AREA	AREA (acres)	"C"		INTENSITY, "I" for $t_c = 15$ min.		FLOW RATE, "Q" (cfs)	
		100 YR.	5 YR.	100 YR.	5 YR.	100 YR.	5 YR.
1	2.22	0.87	0.89	4.58	7.37	8.8	14.6
2	2.22	0.87	0.89	4.58	7.37	8.8	14.6
3	0.41	0.87	0.89	4.58	7.37	1.6	2.7
4	2.12	0.87	0.89	4.58	7.37	8.4	13.9
5	1.95	0.87	0.89	4.58	7.37	7.7	12.8
6	2.12	0.87	0.89	4.58	7.37	8.4	13.9
7	2.12	0.87	0.89	4.58	7.37	8.4	13.9
8	2.12	0.87	0.89	4.58	7.37	8.4	13.9
9	1.49	0.87	0.89	4.58	7.37	5.9	9.8
10	1.49	0.87	0.89	4.58	7.37	5.9	9.8
11	1.49	0.87	0.89	4.58	7.37	5.9	9.8
12	1.67	0.87	0.89	4.58	7.37	6.6	11.0
13	1.17	0.87	0.89	4.58	7.37	4.5	7.5
14	0.50	0.87	0.89	4.58	7.37	2.0	3.3
15	0.28	0.87	0.89	4.58	7.37	1.1	1.8
16	0.28	0.87	0.89	4.58	7.37	1.0	1.6
17	0.22	0.87	0.89	4.58	7.37	0.9	1.4
18	0.29	0.87	0.89	4.58	7.37	1.2	1.9



Note:
Approximate Location of Storm Sewer Inlets
Not Field Verified



Benchmark
"□" T.C. East end of Return
S.E. Corner of Dugan & Talt
Elevation = 118.61

"x" Centerline of both
Hoover & Hendryx Street
Elevation = 115.77