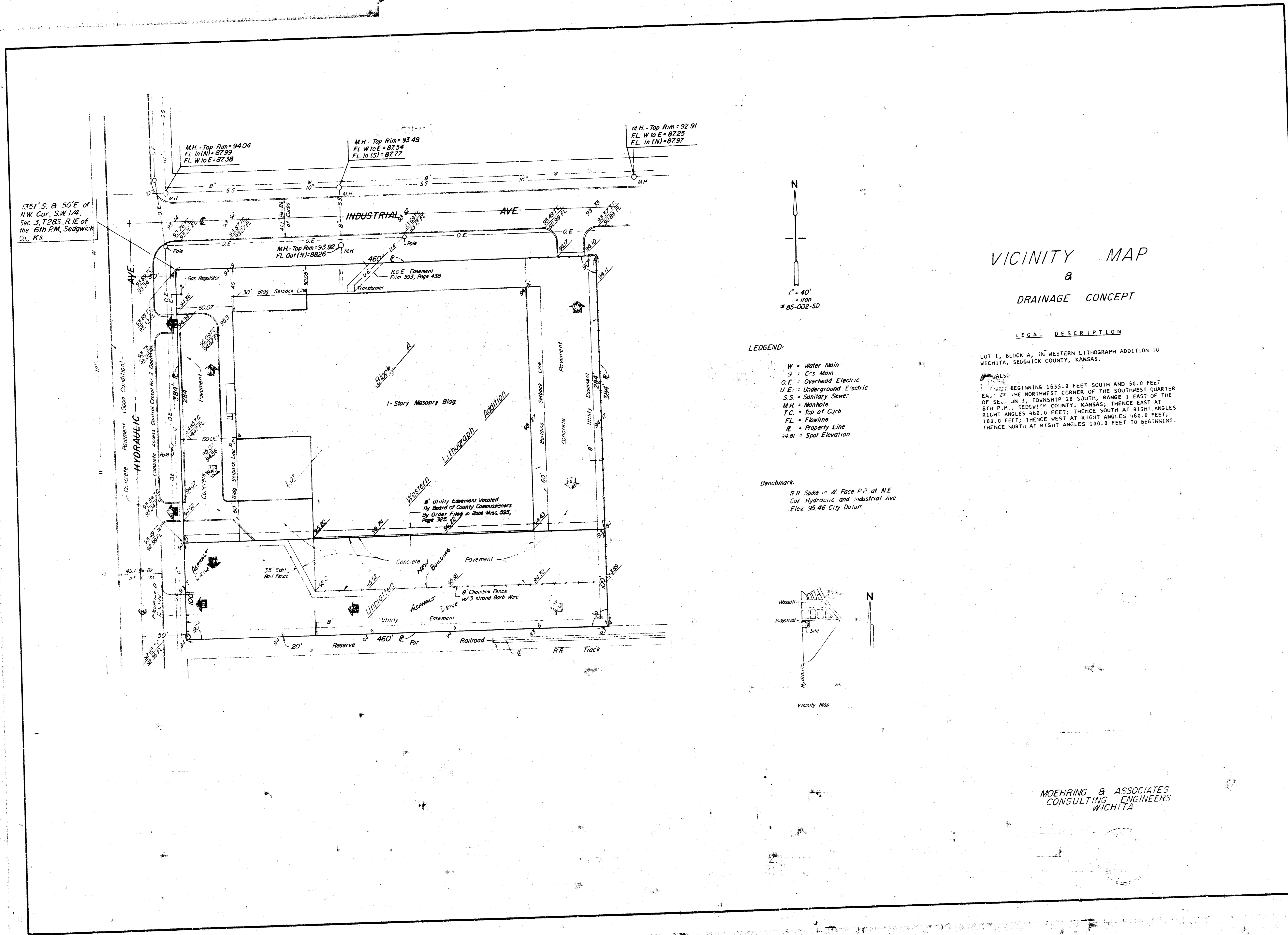
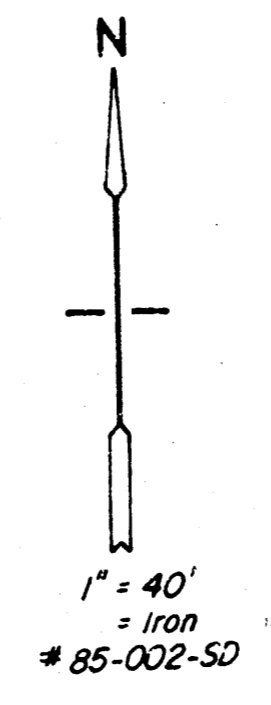


WESTERN LITHOGRAPH 2ND ADDITION  
(Drainage)



1351' S & 50' E of  
NW Cor, SW 1/4,  
Sec 3, T28S, R1E of  
the 6th PM, Sedgwick  
Co., KS.

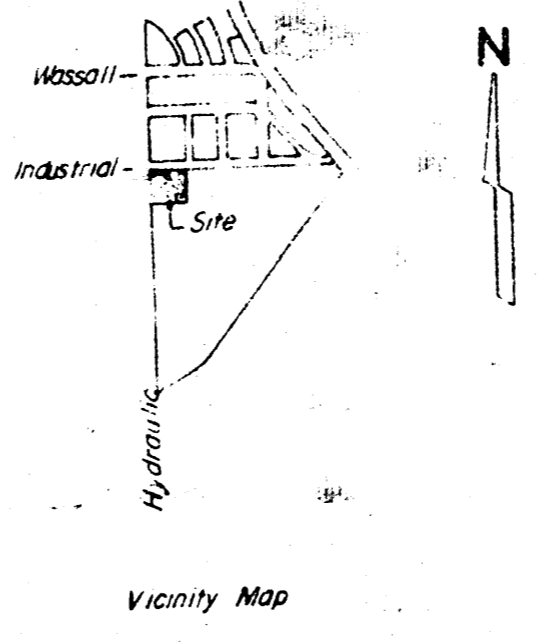


VICINITY MAP  
&  
DRAINAGE CONCEPT

LEGEND:

- W = Water Main
- S = Cast Iron
- O.E. = Overhead Electric
- U.E. = Underground Electric
- S.S. = Sanitary Sewer
- M.H. = Manhole
- T.C. = Top of Curb
- FL = Flowline
- P.L. = Property Line
- ± 81 = Spot Elevation

Benchmark:  
RR Spike in W. Face P.P. at NE  
Cor Hydraulic and Industrial Ave  
Elev. 95.46 City Datum



LEGAL DESCRIPTION

LOT 1, BLOCK A, IN WESTERN LITHOGRAPH ADDITION TO  
WICHITA, SEDGWICK COUNTY, KANSAS.

ALSO  
BEGINNING 1635.0 FEET SOUTH AND 50.0 FEET  
EAST OF THE NORTHWEST CORNER OF THE SOUTHWEST QUARTER  
OF SEC. 10, T. 28 S., R. 1 E., SEDGWICK COUNTY, KANSAS; THENCE EAST AT  
RIGHT ANGLES 460.0 FEET; THENCE SOUTH AT RIGHT ANGLES  
100.0 FEET; THENCE WEST AT RIGHT ANGLES 460.0 FEET;  
THENCE NORTH AT RIGHT ANGLES 100.0 FEET TO BEGINNING.

MOHRING & ASSOCIATES  
CONSULTING ENGINEERS  
WICHITA