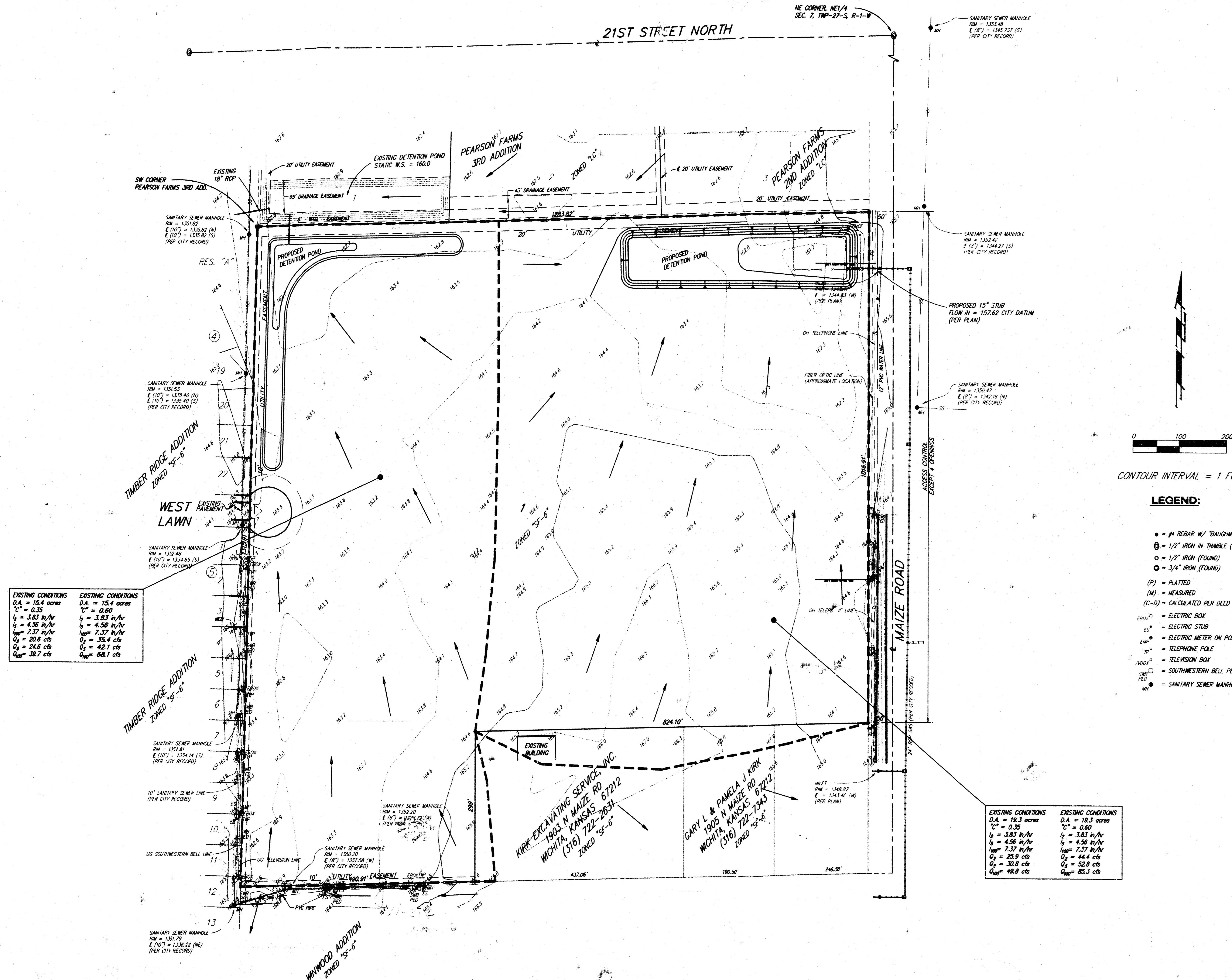


DRAINAGE CONCEPT WESTLINK CHRISTIAN CHURCH ADDITION WICHITA, SEDGWICK COUNTY, KANSAS



EXISTING CONDITIONS	EXISTING CONDITIONS
D.A. = 15.4 acres	D.A. = 15.4 acres
$T_c = 0.35$	$T_c = 0.60$
$I_1 = 3.83 \text{ in/hr}$	$I_1 = 3.83 \text{ in/hr}$
$I_2 = 4.56 \text{ in/hr}$	$I_2 = 4.56 \text{ in/hr}$
$I_{avg} = 7.37 \text{ in/hr}$	$I_{avg} = 7.37 \text{ in/hr}$
$Q_1 = 20.6 \text{ cfs}$	$Q_1 = 35.4 \text{ cfs}$
$Q_2 = 24.8 \text{ cfs}$	$Q_2 = 42.1 \text{ cfs}$
$Q_{avg} = 39.7 \text{ cfs}$	$Q_{avg} = 68.1 \text{ cfs}$

EXISTING CONDITIONS	EXISTING CONDITIONS
D.A. = 19.3 acres	D.A. = 19.3 acres
$T_c = 0.35$	$T_c = 0.60$
$I_1 = 3.83 \text{ in/hr}$	$I_1 = 3.83 \text{ in/hr}$
$I_2 = 4.56 \text{ in/hr}$	$I_2 = 4.56 \text{ in/hr}$
$I_{avg} = 7.37 \text{ in/hr}$	$I_{avg} = 7.37 \text{ in/hr}$
$Q_1 = 25.9 \text{ cfs}$	$Q_1 = 44.4 \text{ cfs}$
$Q_2 = 30.8 \text{ cfs}$	$Q_2 = 52.8 \text{ cfs}$
$Q_{avg} = 48.8 \text{ cfs}$	$Q_{avg} = 85.3 \text{ cfs}$

LEGAL DESCRIPTION:
THE NORTH HALF OF THE SOUTHEAST QUARTER OF THE NORTHEAST QUARTER OF SECTION 7, TOWNSHIP 27 SOUTH, RANGE 1 WEST OF THE SIXTH PRINCIPAL MERIDIAN, SEDGWICK COUNTY, KANSAS, EXCEPT THE EAST 50 FEET THEREOF FOR STREET, AND EXCEPT THE SOUTH 298.0 FEET OF THE EAST 874.12 FEET THEREOF ALONG WITH

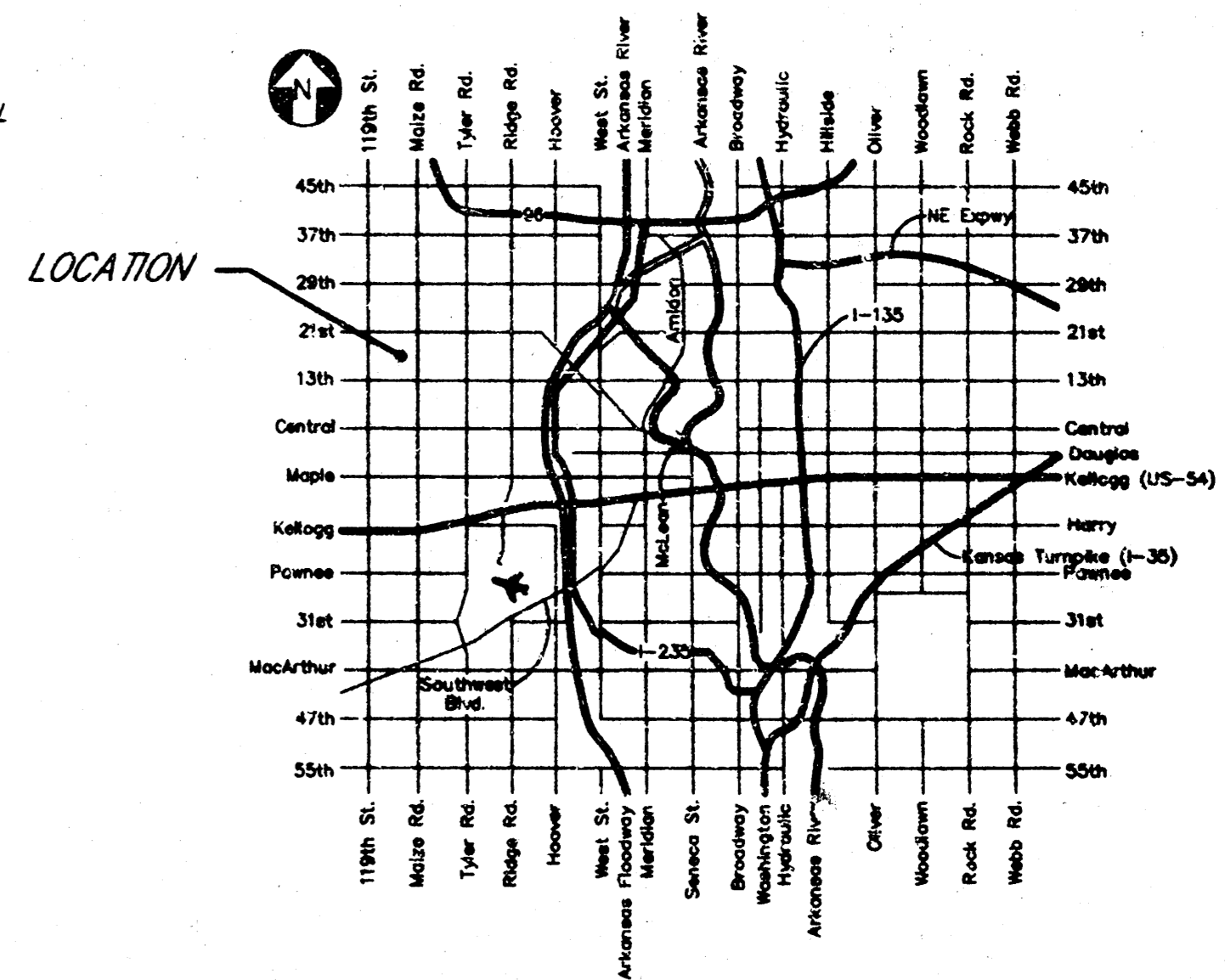
THE SOUTH HALF OF THE NORTHEAST QUARTER OF THE NORTHEAST QUARTER OF SECTION 7, TOWNSHIP 27 SOUTH, RANGE 1 WEST OF THE SIXTH PRINCIPAL MERIDIAN, SEDGWICK COUNTY, KANSAS, EXCEPT THE EAST 50 FEET THEREOF FOR ROAD.

OWNER:
WESTLINK CHRISTIAN CHURCH
ATTN: LOWELL E. RICHARDSON
804 W. KELLOGG DRIVE
WICHITA, KANSAS 67208
(316) 722-3921 EXT. 210

BENCH MARK:
MAIZE RD. @ 21ST ST NORTH
CITY OF WICHITA BENCH MARK - DISC
SE CORNER INTERSECTION
64' EAST AND 99' SOUTH OF CENTER LINE BOTH
ELEVATION = 164.30 (PER CITY RECORD)

1/2" CUT IN
CENTER LINE HEADWALL OF R.C.B.C.
EAST SIDE OF MAIZE ROAD
800'S SOUTH OF 21ST ST NORTH
ELEVATION = 164.93 (CITY DATUM)

- LEGEND:**
- = #4 REBAR W/ "BAUGHMAN" CAP (SET)
 - ⊙ = 1/2" IRON IN THIMBLE (FOUND)
 - = 1/2" IRON (FOUND)
 - = 3/4" IRON (FOUND)
 - (P) = PLATTED
 - (M) = MEASURED
 - (C-D) = CALCULATED PER DEED
 - EBX = ELECTRIC BOX
 - ES = ELECTRIC STUB
 - EM = ELECTRIC METER ON POST
 - TP = TELEPHONE POLE
 - TBX = TELEVISION BOX
 - SWB = SOUTHWESTERN BELL PEDESTAL
 - SM = SANITARY SEWER MANHOLE



VICINITY MAP