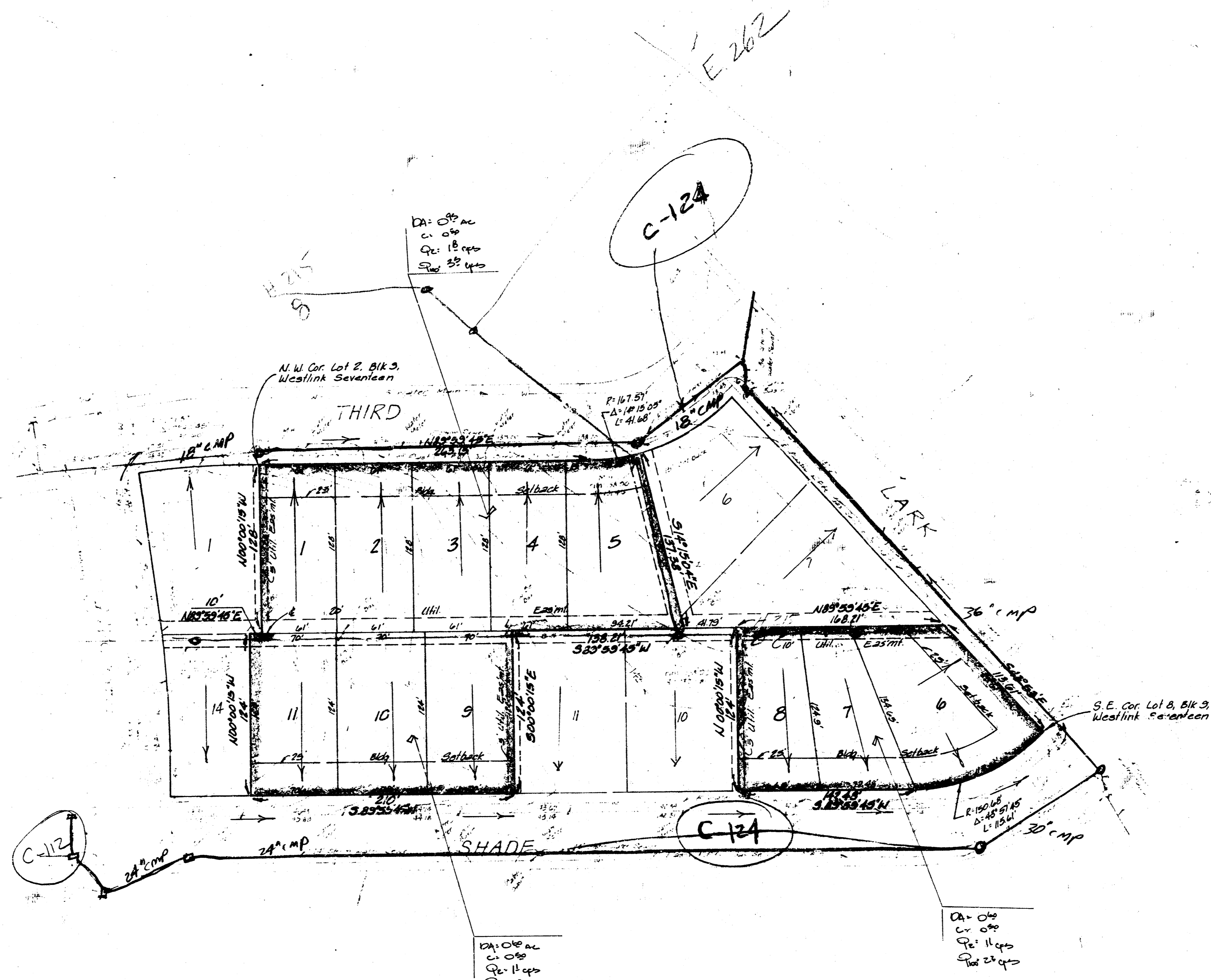


VICINITY PLAT



PRELIMINARY PLAT

WESTLINK VILLAGE 21ST ADDITION

LOTS 2, 3, 4, 5, 8, 9, 10, 11, 12, 13, AND THE EAST 30 FEET OF LOT 14, BLOCK 9,
WESTLINK SEVENTEEN, WICHITA, SEDGWICK COUNTY, KANSAS

OWNER: FIDELITY DEVELOPMENT

DRAINAGE NOTES
The single family residential lots will drain to the adjacent paved streets as indicated on the plan. Third St. and Shade drain east to Lark. Lark drains north as indicated. Existing storm sewers and inlets exist in both streets and discharge into the Cowskin Creek further to the east of this property.

DRAINAGE PLAN
BAUGHMAN COMPANY, P.A.
SURVEYING & ENGINEERING
316-262-7271 • 315 ELLIS • WICHITA, KANSAS 67211
Issued 14 March 1988
Revised 20 January 1987
3 January 1987