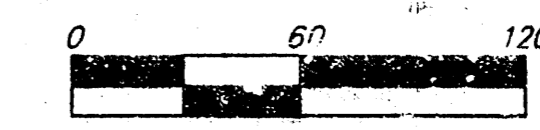


# DRAINAGE PLAN

## WESTRIDGE COMMERCIAL ADDITION

### WICHITA, SEDGWICK COUNTY, KANSAS



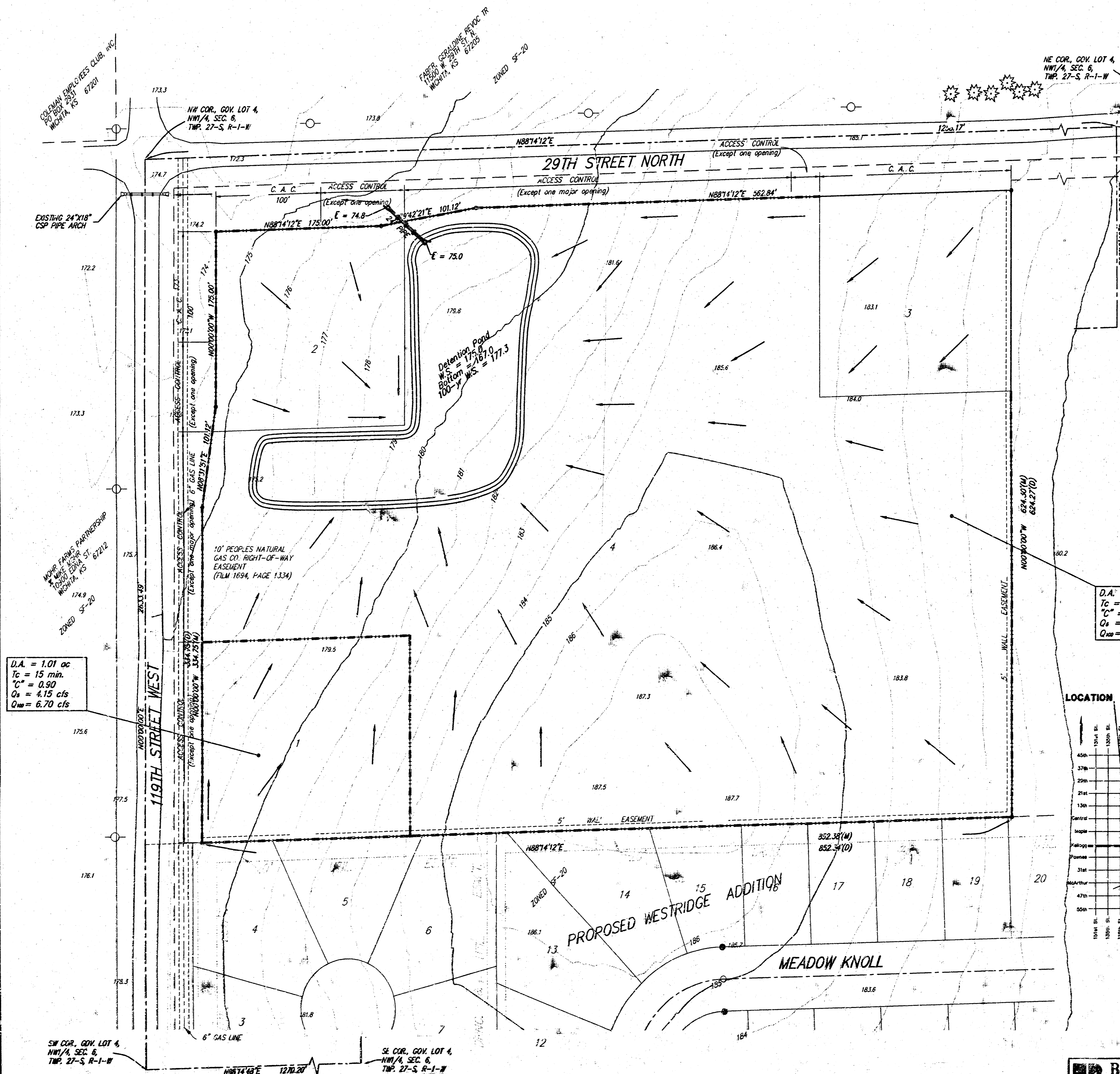
NOTE:  
AERIAL TOPOGRAPHY BY:  
WESTERN AIR MAPS, INC.  
5401 REEDS ROAD  
OVERLAND PARK, KS 66207  
(DATE OF TOPO. = 5/20/89)

NOTE:  
AGREEMENT FOR DRAINAGE PURPOSES  
(MISC. BOOK 258, PAGE 363) OVER  
THE W/2 OF THE NW/4 OF SEC. 6,  
TWP. 27-S, R-1-W.

NOTE:  
CITY SERVICE OIL & GAS CORP. PIPELINE  
RIGHT-OF-WAY EASEMENT  
(MISC. BOOK 125, PAGE 357)  
(FILM 620, PAGE 1257)

CONTOUR INTERVAL = 1 FT.

● = #4 REBAR W/ "BAUGHMAN" CAP (SET)  
○ = UTILITY POLE



**LOTS 1, 2, 3 & 4**  
D.A. = 12.1 ac  
Tc = 15 min.  
Developed  
with Detention  
Q<sub>10</sub> = 13.0 cfs  
Q<sub>50</sub> = 29.0 cfs  
Existing  
C<sub>10</sub> = 0.35  
C<sub>50</sub> = 19.3 cfs  
Q<sub>100</sub> = 31.2 cfs

D.A. = 11.1 ac  
Tc = 15 min.  
C<sub>10</sub> = 0.35  
Q<sub>10</sub> = 43.5 cfs  
Q<sub>50</sub> = 73.6 cfs

D.A. = 1.01 ac  
Tc = 15 min.  
C<sub>10</sub> = 0.50  
Q<sub>10</sub> = 4.15 cfs  
Q<sub>50</sub> = 6.70 cfs

LOCATION

