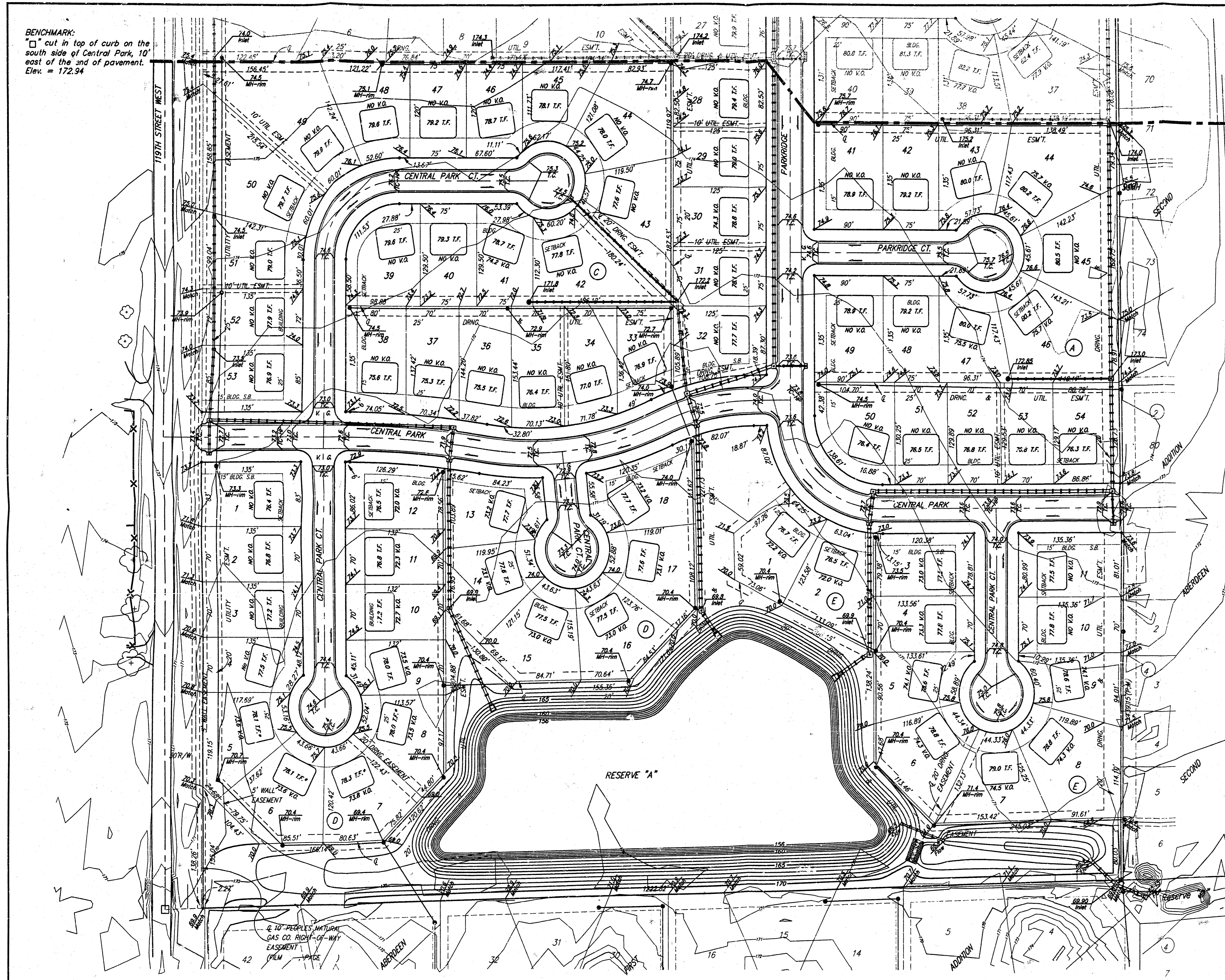
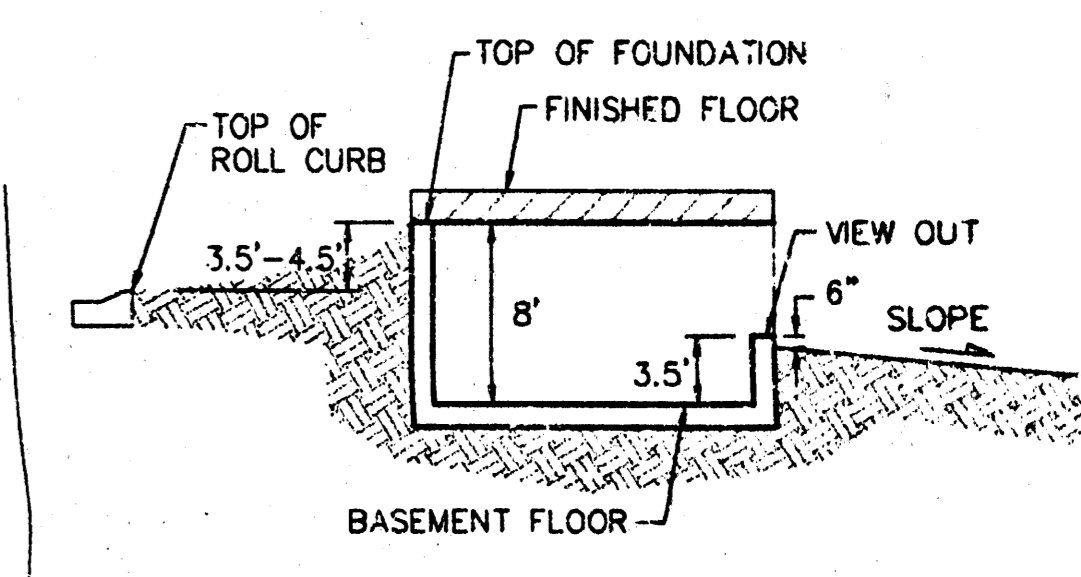


BENCHMARK:
 □ cut in top of curb on the south side of Central Park, 10' east of the end of pavement.
 Elev. = 172.94



SCALE: 1"=60'

NOTE:
 Proposed top of foundation and minimum view-out elevations are shown on plans. Contractor to set finish floor elevation.
 All street elevations shown on plans are for top of curb (full height).
 View-out elevations are denoted as XXX.X V.O.



TYPICAL VIEW OUT
 NO SCALE

**APPROVED
 DRAINAGE PLAN**

WEST RIDGE ESTATES - PHASE 1
GRADING PLAN
 WICHITA, KS

BAUGHMAN COMPANY P.A.
 ENGINEERING, SURVEYING, & PLANNING
 316-262-7271 • 315 ELLIS • WICHITA, KANSAS 67211

DESIGN	DRAWN	APPROVED	DATE	SCALE	SHEET
BP	TMG		09-00	Noted	1

Rat CTD 11/16/00 15 Sept 2000