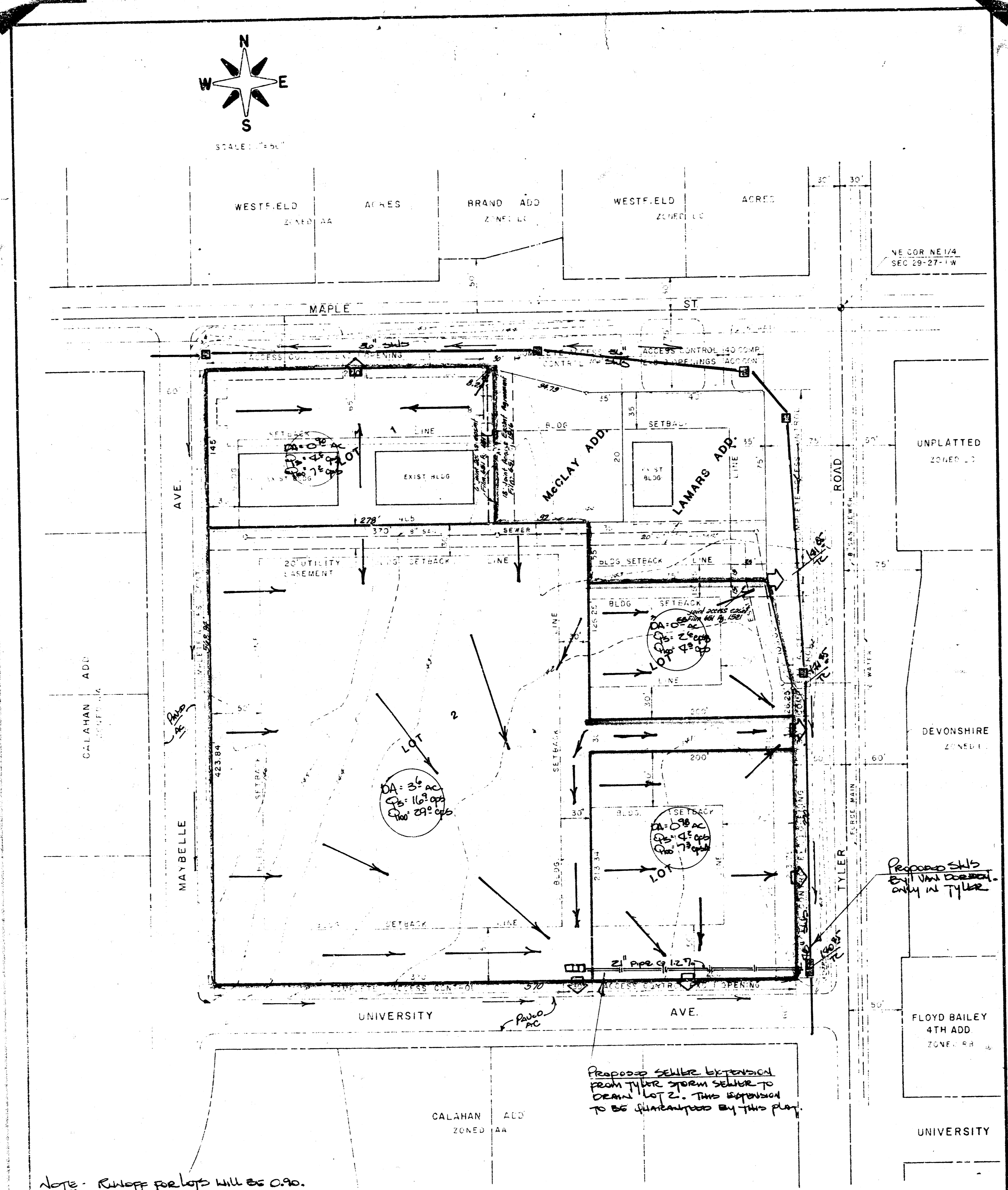
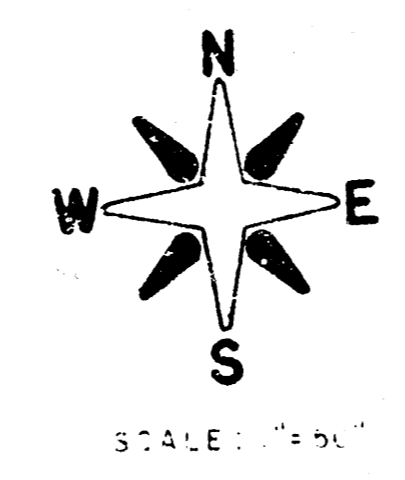


WESTWOOD HILLS ADDITION
(Drainage)



Note: Runoff for lots will be 0.90.
 Lots 1, 3 & 4 will drain to the street's thru drains or plumes.
 Lot 2 will need to have storm sewer by trench to the lot to pick up the 5 year storm flow runoff. The major storm runoff may flow into University thru the driveway and drain east to Tyler.
 Proposed storm sewers & streets by Vandercorn are marked.

SKETCH PLAT
WESTWOOD HILLS ADDITION

PART OF BLOCK Z, CALAHAN ADDITION,
 SEDGWICK COUNTY, KANSAS
 OWNERS:
 R. KELL HAWKINS and V. JERRY BLUE

DRAINAGE PLAN

BAUGHMAN COMPANY, P.A.
 SURVEYING & ENGINEERING
 318-282-7271 • 370 LAURA • WICHITA, KANSAS 67211

7-6-1994