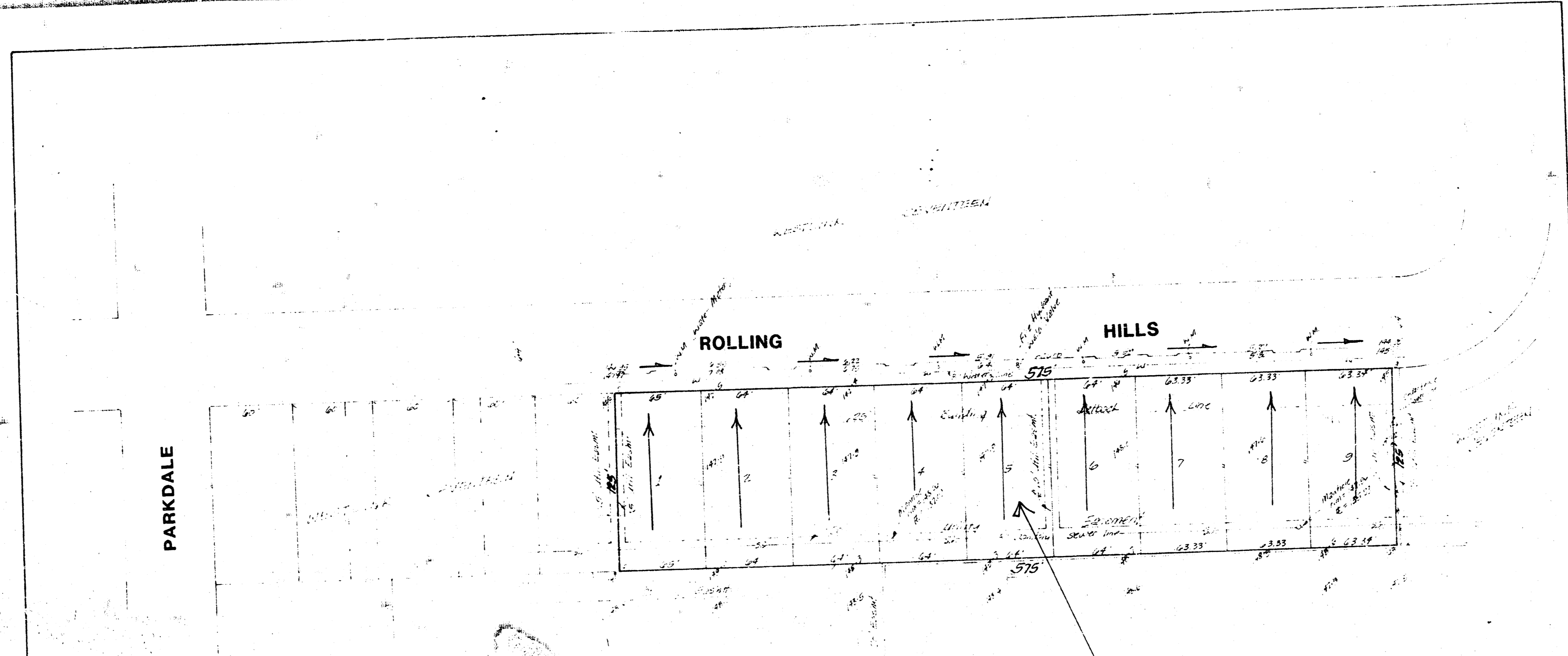


WESTLINK VILLAGE 22ND ADDITION
(Drainage)



SKETCH PLAT
WESTLINK VILLAGE 22ND ADDITION

BEING A REPLAT OF LOTS 25-26-27-28-29 & 30, BLOCK 5, WESTLINK SEVENTEEN

OWNER: FIDELITY SAVINGS ASSOCIATION

Handwritten notes:
 1/2" = 100' x 100'
 1/4" = 50' x 50'
 1/8" = 25' x 25'
 1/16" = 12'5" x 12'5"

DRAINAGE NOTES
 The proposed lots are being replatted from 6 single family lots into 2 single family lots. The lots will drain north to the paved street as indicated on the plan. Rollings Hills Dr. drains east to storm sewers as indicated.

DRAINAGE PLAN
BAUGHMAN COMPANY, P.A.
 SURVEYING & ENGINEERING
 316.262.7271 • 315 ELLIS • WICHITA, KANSAS 67211

MARCH 15, 2008