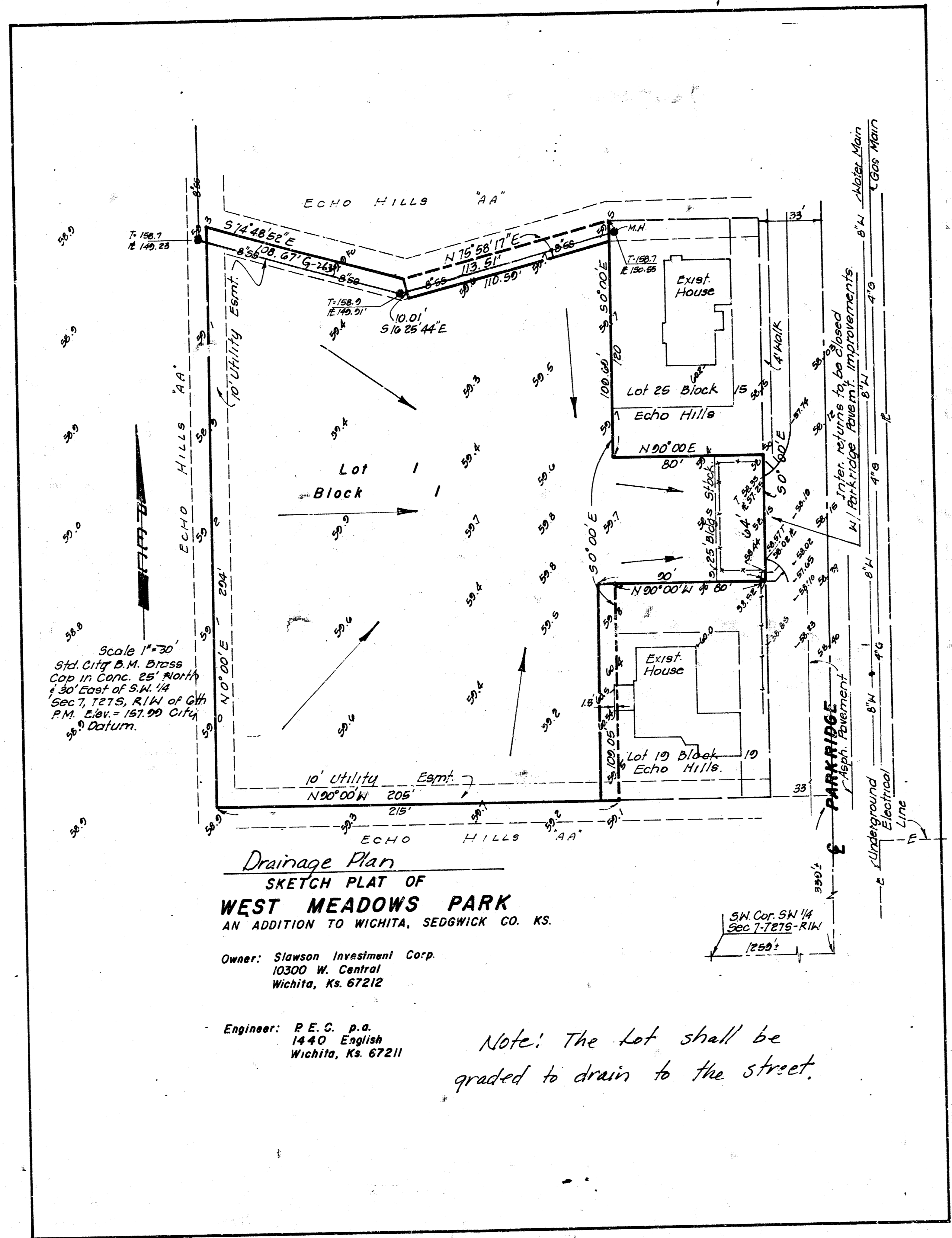


WEST MEADOWS PARK  
(Drainage)



Scale 1"=30'  
Std. City B.M. Brass  
Cap in Conc. 25' North  
1/30' East of S.W. 1/4  
Sec 7, T27S, R1W of 6th  
P.M. Elev. = 157.00 City  
30' Datum.

**Drainage Plan**  
**SKETCH PLAT OF**  
**WEST MEADOWS PARK**  
AN ADDITION TO WICHITA, SEDGWICK CO. KS.

Owner: Slawson Investment Corp.  
10300 W. Central  
Wichita, Ks. 67212

Engineer: P. E. C. p. a.  
1440 English  
Wichita, Ks. 67211

Note: The Lot shall be  
graded to drain to the street.

SW Cor. SW 1/4  
Sec 7-T27S-R1W  
1250'

1/2" Park Ridge Home Improvements  
1/2" Water Main  
8" Gas Main  
8" Electric Line