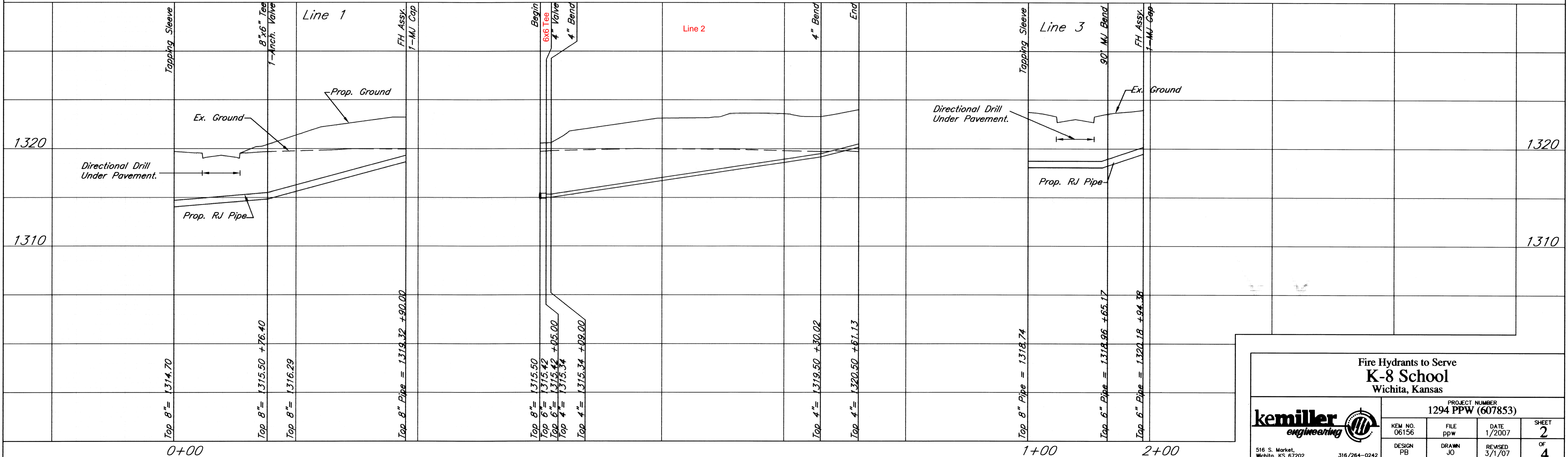
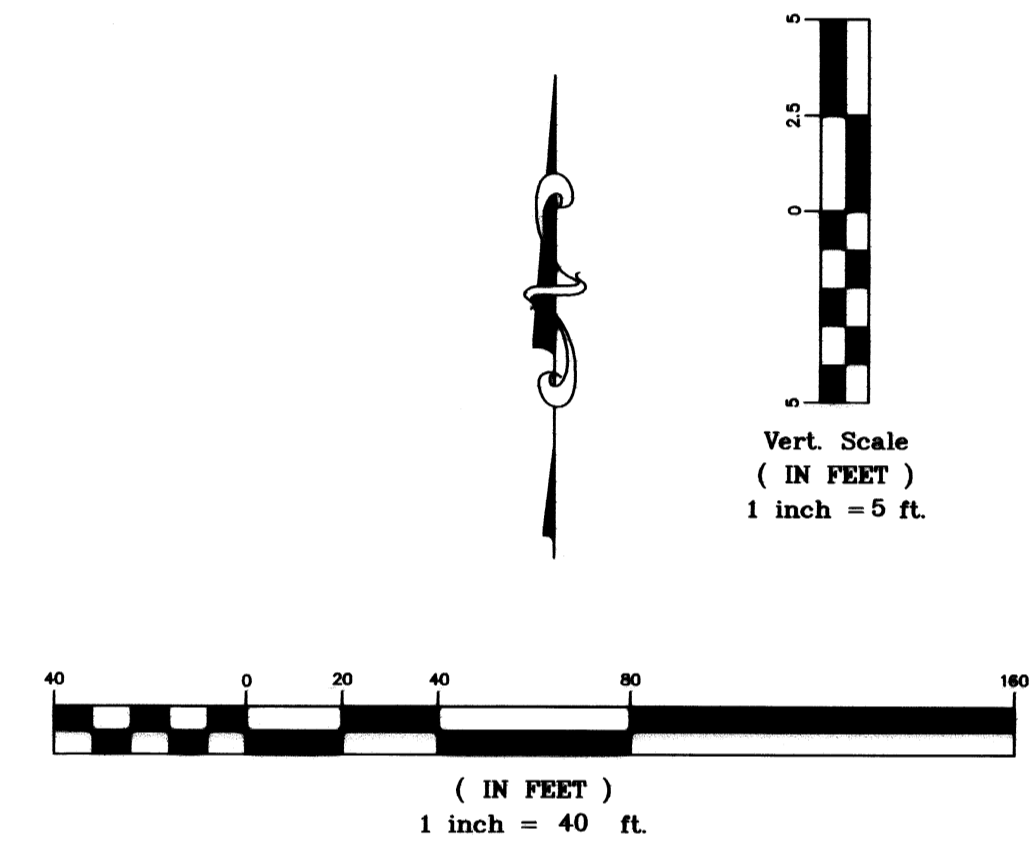


Benchmark:
 1. COW std. Disc. S.E. Corner Intersection of Grove and 25th St. N. 41.0' S. and 21.5' E. of Intersection of centerlines. Elev. = 1329.05
 2. "□" Top of Curb at N.E. Corner Madison and 25th St. N., North Curb Return at North Corner of Wheel Chair Ramp. Elev. = 1329.515

Baseline
 Centerline of 25th St., with Sta. 10+00 at the point Parallel to West Prop. Line.



**Fire Hydrants to Serve
K-8 School
Wichita, Kansas**

kemiller <i>engineering</i>		PROJECT NUMBER 1294 PPW (607853)	
KEM NO. 06156	FILE ppw	DATE 1/2007	SHEET 2
DESIGN PB	DRAWN JO	REVISED 3/1/07	OF 4

516 S. Market, Wichita, KS 67202 316/264-0242