

APPROVED AS NOTED
 BY CITY ENGINEER OF WICHITA,
 BY WICHITA WATER & SEWER DEPARTMENT,
 & BY WICHITA FIRE DEPARTMENT

CITY OF WICHITA
 PRIVATE PROJECT
 NO. 1303PPW (607853)

MARKETPLACE
 EAST ADDITION

Water Mains (Public Works) *3/23/07*
 Water Mains (Water & Sewer Dept.) *3/26/07*

NOTE TO CONTRACTOR

Public Property.
 Inspection and testing for the waterline is to be provided by a Licensed Consulting Engineering Firm under contract with the Owner/Developer. Said inspection to be in accordance with the City of Wichita Standard Construction Engineering Practices and certified by a Professional Engineer licensed in the state of Kansas. No work shall be performed in dedicated easements or public rights-of-way by the Contractor without such inspection, nor shall any work be commenced without written authorization by the City Engineer. All construction and materials shall comply with the City of Wichita Specifications and Standards (on file and available in the City Engineer's Office).

BENCHMARK

BM #1 TOP STEEL "T" POST SET 2" BELOW GRADE 6' N. OF FENCE CORNER, FENCE E. AND S. GATE W., AT S. END McCANDLESS. ELEV.=1314.06

GENERAL NOTES

- ALL WATER MAINS AND APPURTENANCES SHALL BE INSTALLED IN ACCORDANCE WITH CITY OF WICHITA, KANSAS STANDARD SPECIFICATIONS FOR WATER MAIN INSTALLATIONS.
- CONTRACTOR WILL BE REQUIRED TO PROVIDE A MINIMUM ADVANCE NOTICE OF SEVENTY-TWO (72) HOURS TO UTILITY COMPANIES PRIOR TO STARTING ANY EXCAVATION AS FOLLOWS:
 KANSAS ONE-CALL 1-800-344-7233
 OR LOCAL (WICHITA) 687-2470
- THE CONTRACTOR MUST NOTIFY THE FOLLOWING IN CASE OF EMERGENCY:
 CITY OF ANDOVER (LES MANGUS) 733-2621
 COX COMMUNICATIONS (CABLE) 262-0661
 WESTAR (ELECTRIC) 261-6512
 KANSAS GAS SERVICE (GAS) 832-3101
 SBC (TELEPHONE) 800-870-8390
 AQUILA (GAS) 800-303-0357
 WESTAR 383-8600
 CITY OF WICHITA WATER/SEWER 262-6000
- THE WATER MAIN SHALL BE CONSTRUCTED ON THE ALIGNMENT SHOWN ON THE PLANS. TREES AND SHRUBS IN PUBLIC RIGHT OF WAY WHICH ARE IN DIRECT CONFLICT WITH PROPOSED NEW CONSTRUCTION SHALL BE REMOVED BY THE CONTRACTOR WITH THE ENGINEER'S APPROVAL, AND SHALL BE INCLUDED IN THE PRICE BID FOR THE INSTALLED WATER PIPE. TREES AND SHRUBS WHICH ARE NOT IN DIRECT CONFLICT WITH PROPOSED CONSTRUCTION SHALL BE SAVED AND PROTECTED FROM DAMAGE.
- OPENING AND CLOSING WATER VALVES SHALL BE DONE SLOWLY TO PREVENT DAMAGE TO THE WATER DISTRIBUTION SYSTEM FROM WATER HAMMER. ALL VALVES CLOSED BY THE CONTRACTOR MUST BE REOPENED AFTER NEW CONSTRUCTION PERMITS. PROJECT INSPECTOR MUST ASCERTAIN THAT ANY VALVE CLOSED BY THE CONTRACTOR IS REOPENED. CONTRACTOR WILL BE PERMITTED TO OPERATE WATER VALVES ONLY WHEN THE PROJECT INSPECTOR ASSIGNED TO THE PROJECT IS PRESENT.
- CONTRACTOR SHALL NOT START WORK ON THE PROJECT UNTIL THE PROJECT INSPECTOR IS ASSIGNED TO THE PROJECT AND IS PRESENT ON THE SITE. ANY WORK DONE WITHOUT INSPECTION WILL BE REQUIRED TO BE UNCOVERED FOR INSPECTION.
- THE CONTRACTOR SHALL BE RESPONSIBLE FOR PRESERVING PROPERTY IRONS. THE CONTRACTOR WILL BE REQUIRED TO RE-ESTABLISH ANY PROPERTY IRONS WHICH ARE DAMAGED OR DESTROYED BY HIS CONSTRUCTION OPERATIONS. SUCH IRONS SHALL BE RE-ESTABLISHED BY A LICENSED LAND SURVEYOR IN ACCORDANCE WITH STATE LAWS. ALL COSTS FOR THIS WORK SHALL BE SUBSIDIARY TO SITE RESTORATION COSTS.
- NO SERVICES WILL BE INSTALLED AS PART OF THIS PROJECT.

8. RUBBLE FROM THE REMOVAL OF MISCELLANEOUS STRUCTURES INCLUDING ANY TREES REMOVED AND TREE TRIMMING SHALL BE DISPOSED OF ON SITES TO BE PROVIDED BY THE CONTRACTOR. THESE SITES SHALL BE APPROVED BY THE ENGINEER AS TO SUITABILITY, APPEARANCE AND SITE LOCATION. LOCATIONS THAT, IN THE OPINION OF THE ENGINEER, WILL LEAVE AN UNSIGHTLY APPEARANCE SHALL NOT BE APPROVED. ALL DISPOSAL SITES MUST BE APPROVED BY THE KANSAS DEPARTMENT OF HEALTH AND ENVIRONMENT. MATERIAL EITHER STOCKPILED OR DISPOSED OF IN A FLOOD PLAIN WOULD REQUIRE A KANSAS STATE BOARD OF AGRICULTURE PERMIT. ANY MATERIAL DUMPED IN WATERS OF THE UNITED STATES OR WETLANDS IS SUBJECT TO U.S. CORPS OF ENGINEERS PERMITTING REGULATIONS. ANY MATERIAL BURIED OR STOCKPILED BEYOND APPROVED CONSTRUCTION LIMITS WOULD REQUIRE ADDITIONAL ARCHAEOLOGICAL INVESTIGATIONS UNLESS COVERED IN A PREVIOUSLY APPROVED BORROW LOCATION.

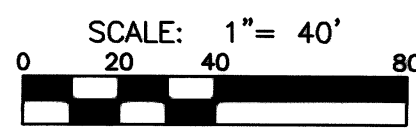
9. THE CONTRACTOR SHALL LAY A TRACER WIRE & SET TEST STATIONS ALONG ALL WATER LINE PIPE INSTALLED IN ACCORDANCE WITH CITY OF ANDOVER SPECIFICATIONS & TRACER WIRE DETAIL ON DETAIL SHEET. COST IS SUBSIDIARY TO PIPE INSTALLATION.

STA 10+00, LINE 1=
 REMOVE 8" PLUG AND
 CONNECT TO EXIST VALVE
 CP-WL1

STA 12+79.00, LINE 1=
 STA 10+00.00, LINE 2
 1-8"x8" TEE
 2-8" VALVE ASSY (S&N)
 CP-WL2

STA 14+61.40, LINE 1
 1-FIRE HYDRANT ASSY
 L=5.00'(E)
 1-8" VALVE ASSY (N)
 CP-WL5
 CP-WL6 (FH)

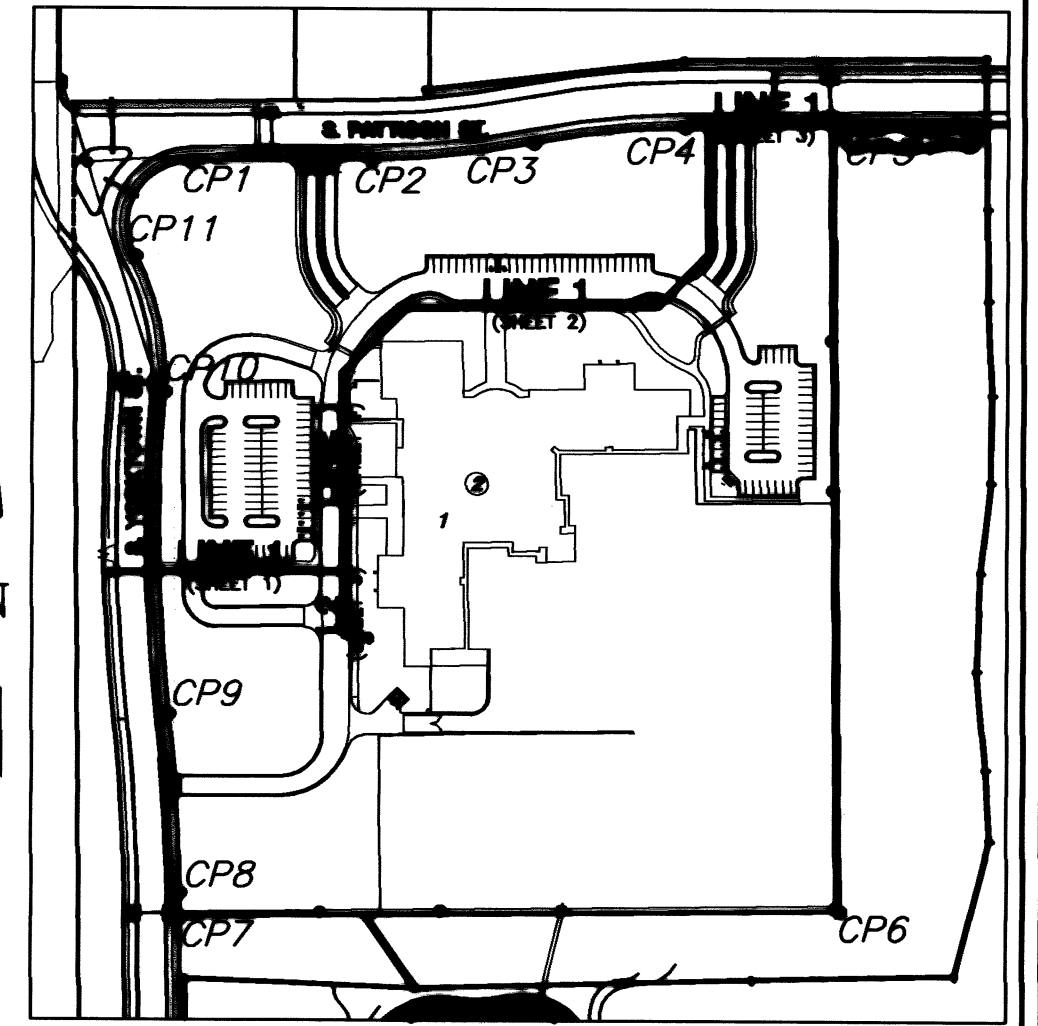
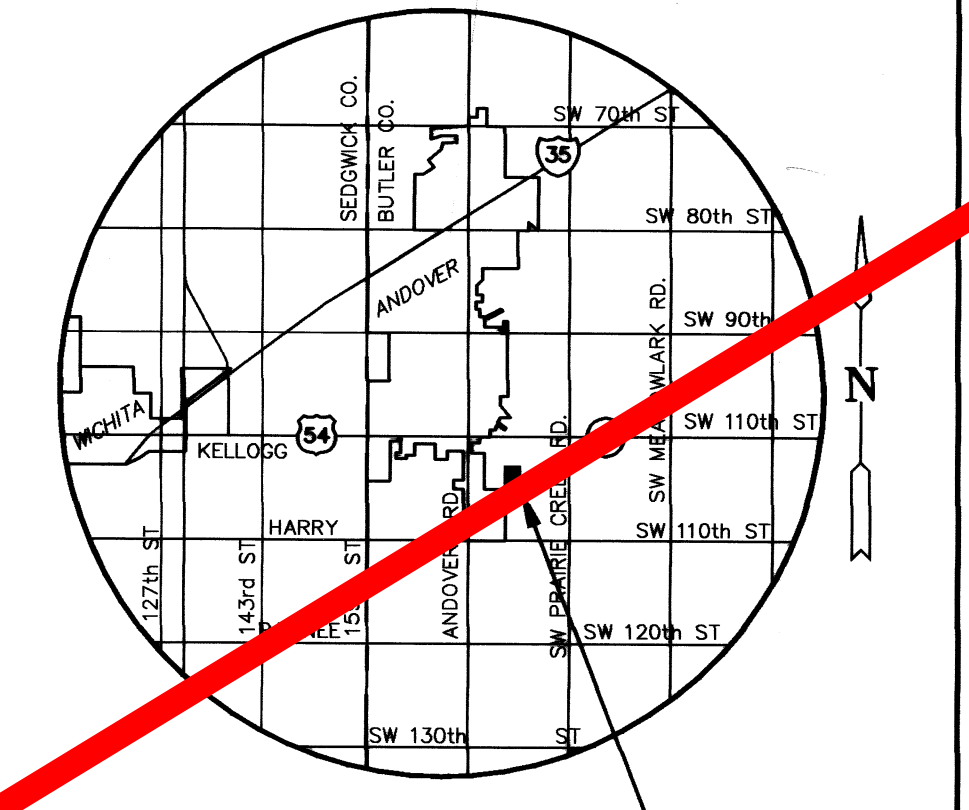
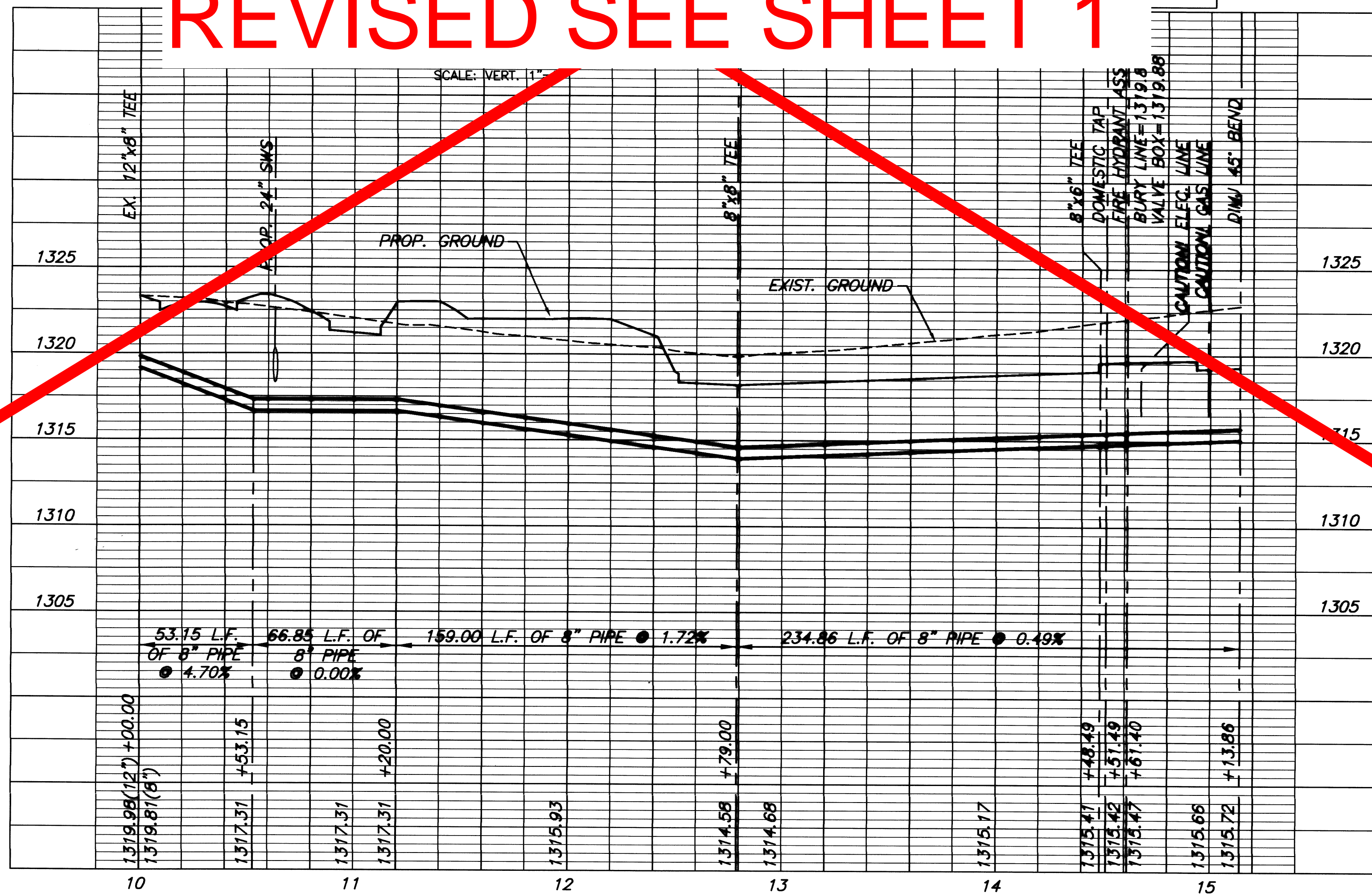
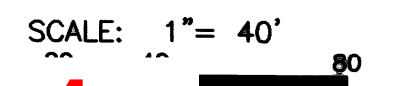
STA 14+51.49, LINE 1=
 DOM. WTR "BY OTHERS"
 CP-WL4



WATER LINE VALVES TO BE
 OPERATED BY CONTRACTOR ONLY
 IF WATER INSPECTOR IS ON SITE

PLAN LINE 1
 SCALE: 1"=40'

NOTES:
 CONTRACTOR TO VERIFY THE DEPTH
 AND LOCATION OF EXISTING
 UTILITIES PRIOR TO CONSTRUCTION



CONTROL POINTS

CP1	N1683178.66	E1710278.00
CP2	N1683180.95	E1710494.61
CP3	N1683201.07	E1710867.10
CP4	N1683219.83	E1710866.64
CP5	N1683221.70	E1711044.88
CP6	N1682291.74	E1711053.16
CP7	N1682283.52	E1710268.44
CP8	N1682311.98	E1710268.17
CP9	N1682523.68	E1710255.04
CP10	N1682905.19	E1710248.56
CP11	N1683066.01	E1710213.07
WL1	N1682690.95	E1710183.04
WL2	N1682693.44	E1710462.03
WL3	N1682862.92	E1710460.52
WL4	N1682865.92	E1710460.49
WL5	N1682875.83	E1710460.41
WL6	N1682875.87	E1710465.40
WL7	N1682878.28	E1710459.94
WL8	N1683005.57	E1710535.94
WL9	N1683008.27	E1710831.10
WL10	N1683015.27	E1710831.04
WL11	N1683008.32	E1710836.10
WL12	N1683070.85	E1710818.62
WL13	N1683226.12	E1710894.05
WL14	N1683229.49	E1711215.82
WL15	N1682617.04	E1710462.70
WL16	N1682617.31	E1710492.70
WL17	N1682612.31	E1710492.75

MKEC
 ENGINEERING
 CONSULTANTS, INC.
 411 N. WEBB ROAD
 WICHITA, KS. 67206
 316-684-9600

BOB A. SERRIS
 LICENSED PROFESSIONAL ENGINEER
 KANSAS
 3/23/07

WATER DISTRIBUTION PLANS
 ANDOVER ELEMENTARY SCHOOL #3
 ANDOVER, KANSAS

LINE 1
 SHEET TITLE
 PROJECT NUMBER
 06771

DESIGN BY
 SRS
 DRAWN BY
 MK
 CHECKED BY
 MAB

ISSUED
 MARCH 2007

SHEET NO.
 1 of 4