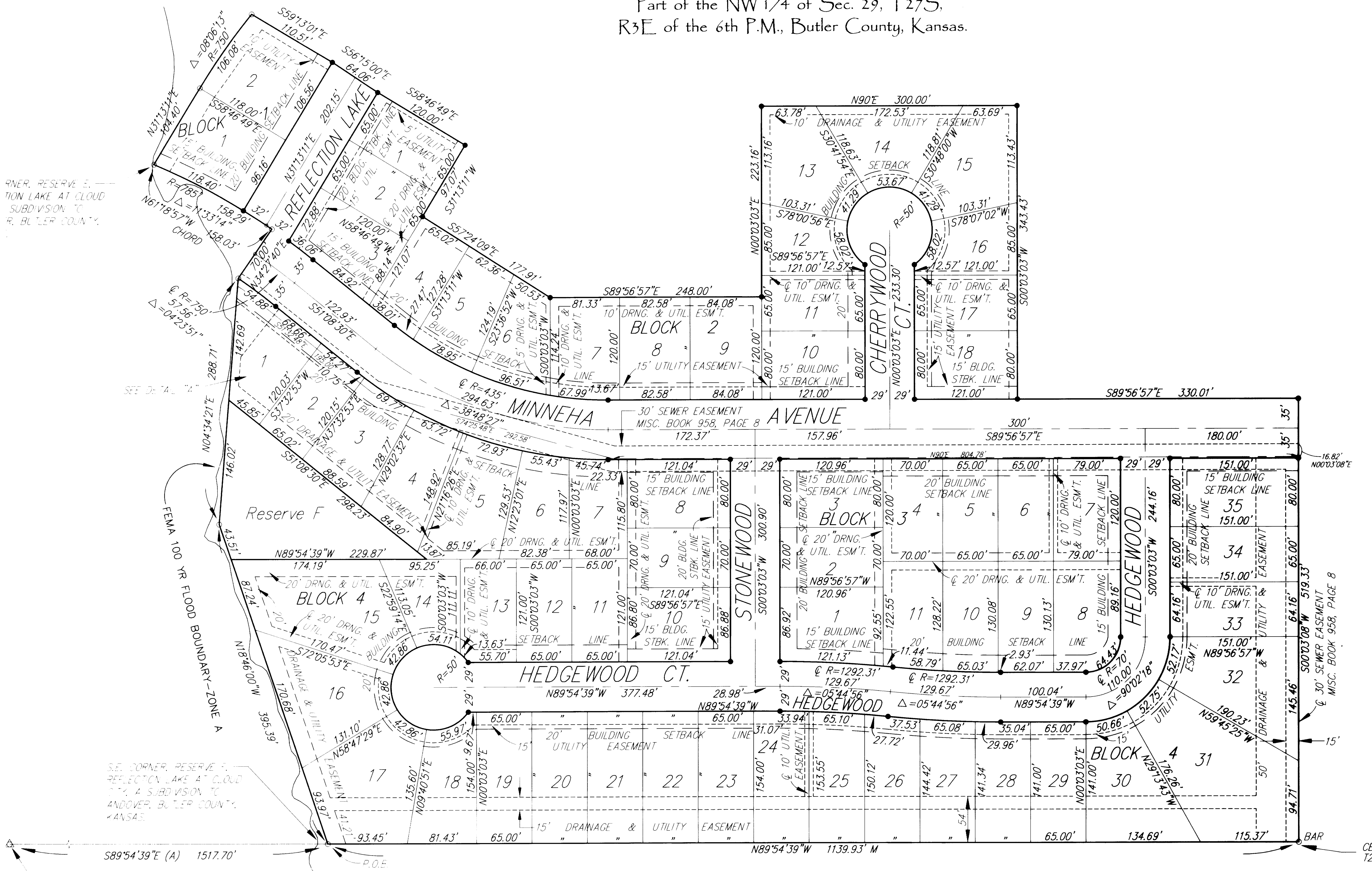


# FINAL P.U.D. PLAN OF REFLECTION LAKE AT CLOUD CITY 2<sup>nd</sup> ADDITION

A Subdivision to Andover, Butler County, Kansas

Part of the NW 1/4 of Sec. 29, T27S,  
R3E of the 6th P.M., Butler County, Kansas.



1" = 60'  
(A) = ASSUMED

**SURVEY MARKER LEGEND**

- △ = 5/8" REBAR (FOUND)
- = 5/8" REBAR W/SRB CAP (FOUND)
- = 5/8" REBAR W/R&B CAP (SET)

CENTER SECTION 29,  
T27S, R3E

SW Corner, NW 1/4  
Section 29, T27S, R3E

**RUGGLES & BOHM**  
WICHITA, KANSAS

**Ruggles & Bohm, P.A.**  
Engineering, Surveying, Land Planning

924 North Main (316) 264-8008  
Wichita, Kansas 67203 (316) 264-4621 fax  
www.rbkansas.com E-mail: info@rbkansas.com