

Lat. 25, Main 19, S.W.I.  
**SANITARY SEWER IMPROVEMENTS**  
 to serve

**TYLER'S LANDING 3RD ADDITION PHASE II  
 AND TYLER'S LANDING COMMERCIAL ADDITION**

CITY OF WICHITA, KANSAS

James Armour, P.E. City Engineer

Project Number

**468-84064**

O.C.A. Number

**744210**

**Utility Contractors, Inc. - Contractor**  
**Shearer/Weigant - Inspectors**  
 Released 9/17/07  
 As-Built  
 Risers & Stubs  
 .pdf by JDL 11/16/07

**GENERAL NOTES:**

1. Contractor will be required to provide notice to utility companies a minimum of forty-eight (48) hours prior to any excavation, as follows:

Kansas One-Call 687-2470

The Contractor must notify the following in case of an emergency:

Cox Communications 262-4270  
 Kansas Gas Service 1-888-482-4950  
 Westar Energy 383-8650  
 Aquila Energy 1-800-303-0357  
 AT&T 268-2245  
 City of Wichita Water Dept. 268-4563  
 City of Wichita Sewer Maint. 268-4024  
 City of Wichita Storm Sewer Maint. 268-4090  
 City of Wichita Traffic Maint. 268-4034  
 Conoco Pipeline Co. 1-800-231-2551  
 Southern Star Pipeline Co. 529-6600  
 Phillips Pipeline Co. 1-800-766-8230

2. Utility service lines, poles, valve boxes, meters, and etcetera are to be adjusted as necessary by others prior to construction unless the plans specifically call for their adjustment by the Contractor or unless the plans specifically identify a utility to be adjusted by its owner during construction. Existing utilities and their location, as shown on the plans, represent the best information obtainable for design. The Contractor will be required to work around existing utilities within the right-of-way which do not conflict with proposed construction. The contractor shall coordinate all crossings and construction near existing utilities with the owner of that utility. (Electric - Westar Energy, CATV - Cox Communications, Gas - Aquila, and Phone - AT&T)

3. Rubble from the removal of miscellaneous structures and excess excavation which is to be wasted shall be disposed of on sites to be provided by the Contractor. These sites shall be approved by the Engineer as to suitability, appearance and site location. Locations, in the opinion of the Engineer, that will leave an unsightly appearance will not be approved. All disposal sites must be approved by the Kansas Department of Health and Environment. Material either stockpiled or disposed of in a flood plain would require a Kansas State Board of Agriculture permit. Any material dumped in waters of the United States or wetlands is subject to U.S. Corps. of Engineers permitting regulations. Any material buried or stockpiled beyond approved construction limits would require additional archaeological investigations unless buried in a previously approved borrow location.

4. Unless specifically noted on plans, trees and shrubs in public right-of-way which are in direct conflict with proposed new construction shall be removed by the Contractor ONLY with the Developer or Baughman Company approval. Trees and shrubs which are not in direct conflict with proposed new construction shall be saved and protected from damage.

5. The Contractor shall give all property owners and/or tenants of developed property abutting the construction of this project a minimum of ten (10) days notice prior to start of construction.

6. The Contractor shall be responsible for preserving property irons. The Contractor will be required to re-establish any property irons which are damaged or destroyed by his construction operations. Such irons shall be re-established by a licensed land surveyor in accordance with state laws.

7. All existing and proposed erosion control measures including silt fencing, erosion control mat, straw bales, inlet barriers, and const. entrance shall be maintained throughout construction by the contractor and until project is accepted by the City of Wichita. The on-site engineer shall complete weekly reports on the status of erosion control measures. The contractor shall be required to comply with maintenance and/or replacement of erosion control measures as determined by the on-site engineer until project is accepted by City of Wichita.

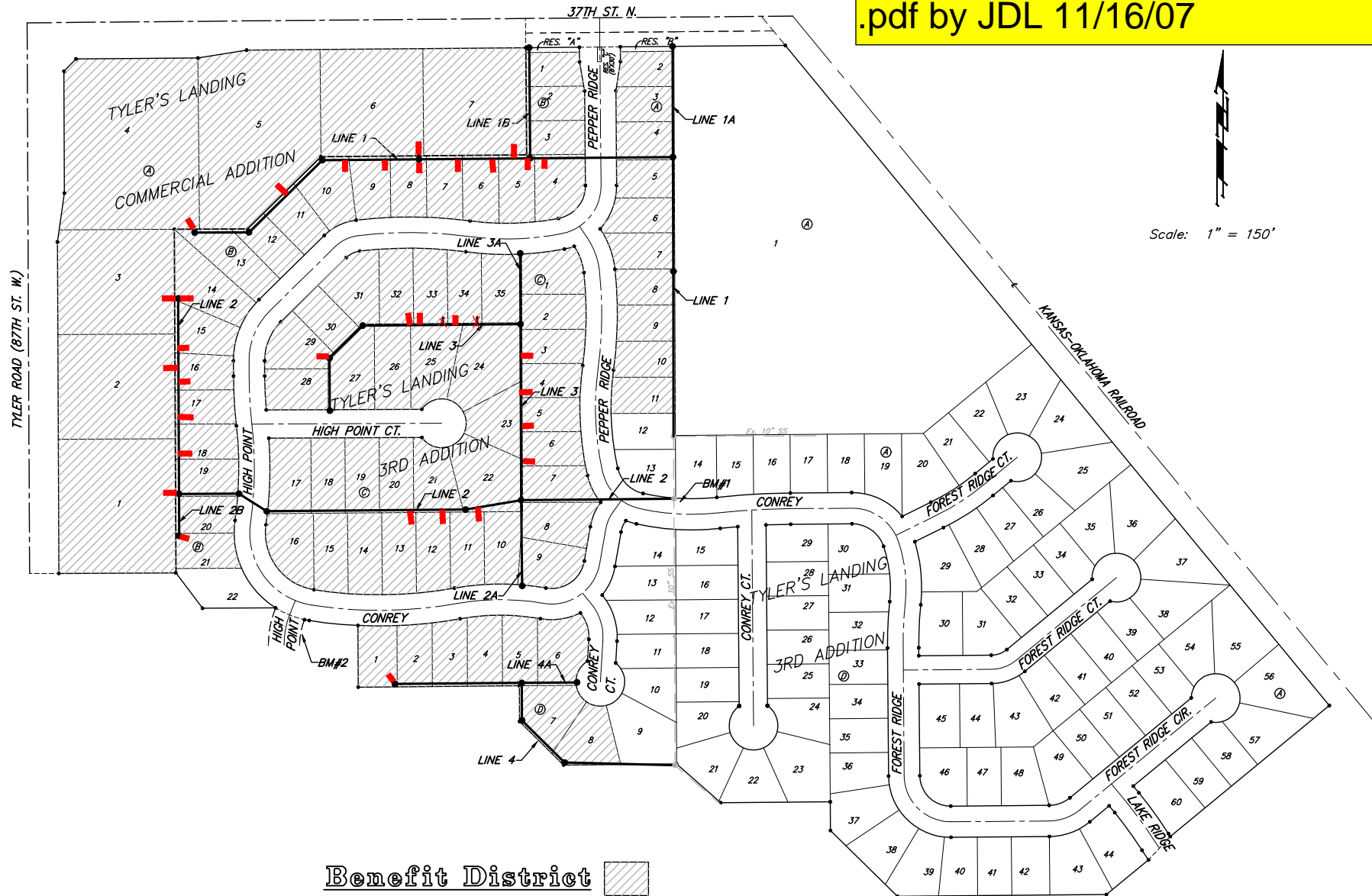
8. The Contractor shall be responsible for maintaining continuous flow of sewage through construction. Contractor's proposed method for maintaining sewage flow shall be approved by the Engineer. Cost of maintaining flow of sewage through construction will not be paid for directly and this cost shall be considered as subsidiary to the other pay items of work.

9. The developer for this project is Jay W. Russell, and may be contacted at (316)722-2417.

10. All excess excavation shall remain on-site and shall be stockpiled or spread at a location determined by the engineer.

11. Riser Method "B" shall be used for all riser construction.

12. Contractor shall coordinate construction with 37th St. N. Paving Contractor: Lafarge North America.



Benefit District

**Benchmarks:**

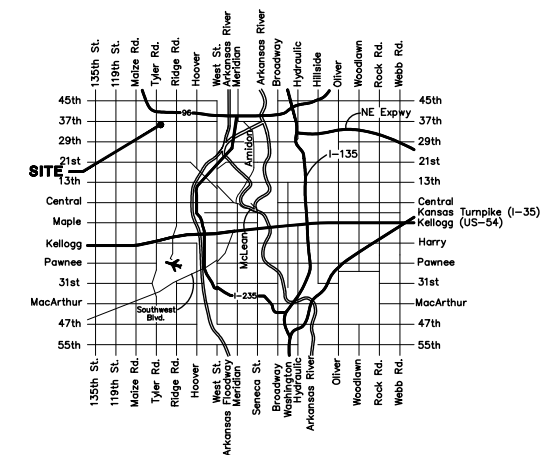
Benchmarks:  
 BM #1: "□" Cut in Middle of Curb Inlet Top, North Curb of Conrey, Adjacent to SW Corner of Lot 14, Block A, Tyler's Landing 3rd Addition. Elev. = 150.29 (1337.69 M.S.L.)

BM #2: "□" Cut in Top of East Curb of High Point, 10' South of End of Return, Adjacent to Lot 1, Block D, Tyler's Landing Addition. Elev. = 155.28 (1342.68 M.S.L.)

**Sheet Index**

Title Sheet	1
Line 1	2,3
Lines 1A & 1B	4
Lines 2 & 2B	5,6
Line 2A	7
Lines 3 & 3A	8-10
Line 4	11
Line 4A	12
Standard Manhole Detail	13
Ring & Cover Detail	14
Riser Detail	15
Erosion Control Plan	16
Erosion Control Details	17-20
Coordinate Sheet	21
Copy of Plats	22,23

Scale: 1" = 150'



**Vicinity Map**

**January 2007**



Baughman Company, P.A. 315 Ellis St. Wichita, KS 67211 P 316-262-7271 F 316-262-0149  
 ENGINEERING | SURVEYING | PLANNING | LANDSCAPE ARCHITECTURE