

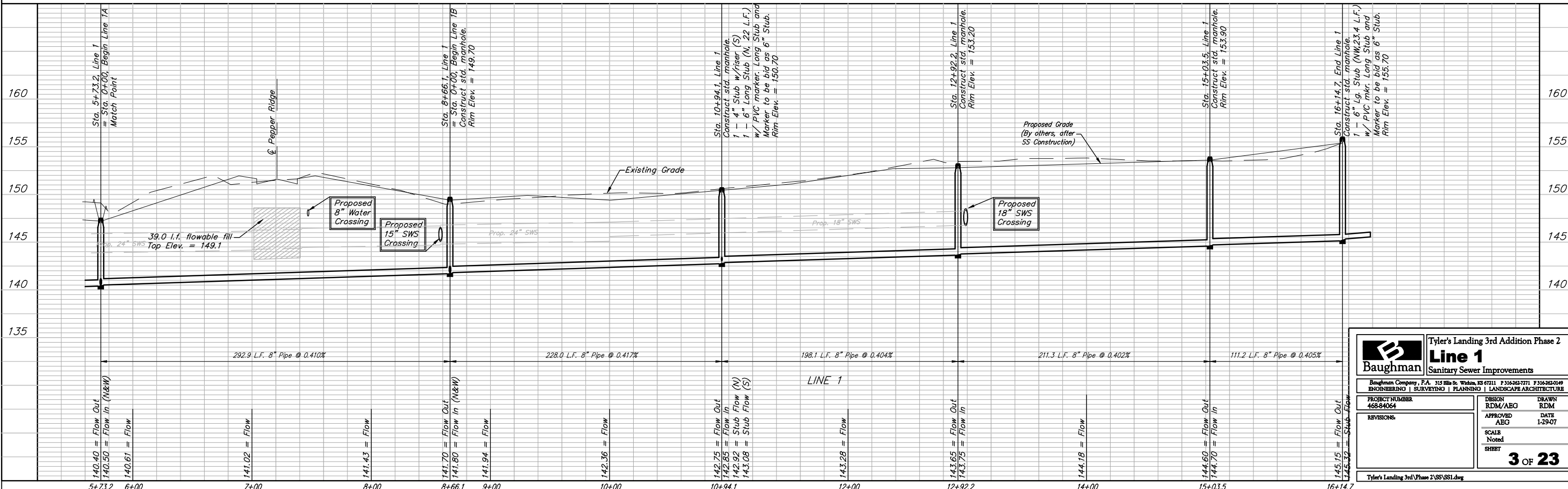
SEWER SERVICE TABLE

NUMBER	TYPE	LOCATION			FOR INFORMATION ONLY		
		LOT NO.	BLOCK NO.	LINE NO.	STATION \ DIRECTION	APPROXIMATE LENGTH 4" PIPE VERTICAL	HORIZONTAL
1	8" X 4" Tee	4	B	1	8+37/Lt.	5.0'	15.0'
2	8" X 4" Tee	5	B	1	8+72/Lt.	4.0'	15.0'
3*	8" X 6" Tee	7	A	1	9+41/Rt. 07	4.0'	22.0'
4	8" X 4" Tee	6	B	1	9+41/Lt.	4.0'	15.0'
5	8" X 4" Tee	7	B	1	10+41/Lt. 13	3.5'	15.0'
6	4" Stub	8	B	1	10+94/Lt.	4.5'	15.0'
7	8" X 4" Tee	9	B	1	11+63/Lt.	4.5'	15.0'
8	8" X 4" Tee	10	B	1	12+46/Lt.	5.5'	15.0'
9*	8" X 6" Tee	5	A	1	13+95/Rt.	5.5'	22.0'

NOTE: Vertical Riser Pipe shall be extended to 2' minimum above ground water elevation and 4' maximum below proposed ground elevation.
* Denotes Sewer Service for Tyler's Landing Commercial Addition. Risers shall be 6" pipe.

Benchmarks:
BM #1: "□" Cut in Middle of Curb Inlet Top, North Curb of Conrey, Adjacent to SW Corner of Lot 14, Block A, Tyler's Landing 3rd Addition. Elev. = 150.29 (1337.69 M.S.L.)

BM #2: "□" Cut in Top of East Curb of High Point, 10' South of End of Return. Adjacent to Lot 1, Block D, Tyler's Landing Addition. Elev. = 155.28 (1342.68 M.S.L.)



Baughman Tyler's Landing 3rd Addition Phase 2
Line 1
Sanitary Sewer Improvements

ENGINEERING | SURVEYING | PLANNING | LANDSCAPE ARCHITECTURE

PROJECT NUMBER: 468-84064
DESIGN: RDM/ABG
DRAWN: RDM
APPROVED: ABG
DATE: 1-29-07
SCALE: Noted
SHEET: 3 OF 23

Tyler's Landing 3rd Phase 2\SS\SS1.dwg