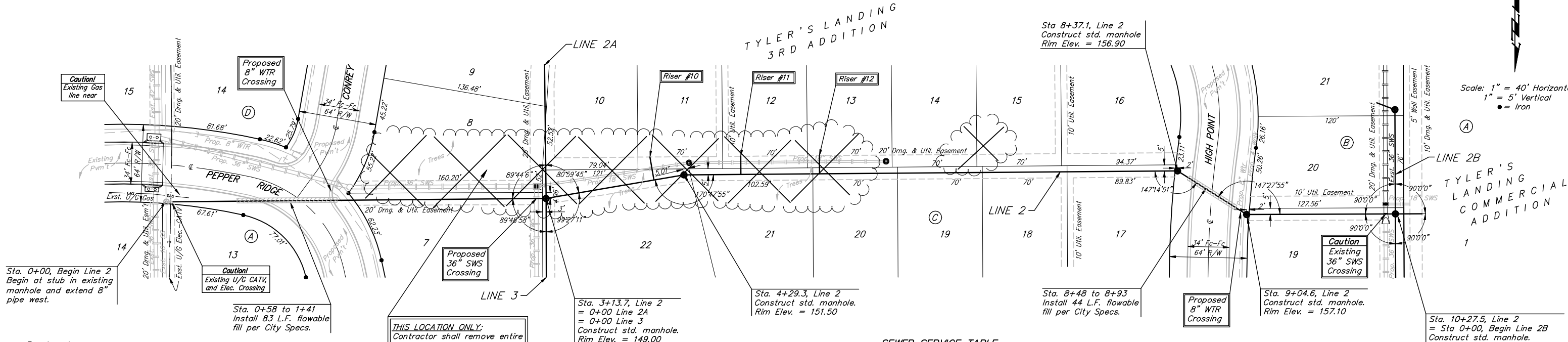




Scale: 1" = 40' Horizontal
1" = 5' Vertical
● = Iron



Sta. 0+00, Begin Line 2
Begin at stub in existing
manhole and extend 8"
pipe west.

Sta. 0+58 to 1+41
Install 83 L.F. flowable
fill per City Specs.

Benchmarks:
BM #1: "□" Cut in Middle of Curb
Inlet Top, North Curb of Conroy,
Adjacent to SW Corner of Lot 14,
Block A, Tyler's Landing 3rd Addition.
Elev. = 150.29 (1337.69 M.S.L.)

BM #2: "□" Cut in Top of East Curb
of High Point, 10' South of End of
Return. Adjacent to Lot 1, Block D,
Tyler's Landing Addition.
Elev. = 155.28 (1342.68 M.S.L.)

THIS LOCATION ONLY:
Contractor shall remove entire
tree row in this location and
dispose of brush. All stumps
shall also be dug up and
disposed of. Cost of tree
removal and disposal shall be
included in "Site Clearing and
Restoration."

Sta. 3+13.7, Line 2
= 0+00 Line 2A
= 0+00 Line 3
Construct std. manhole.
Rim Elev. = 149.00

Sta. 4+29.3, Line 2
Construct std. manhole.
Rim Elev. = 151.50

Sta. 8+37.1, Line 2
Construct std. manhole
Rim Elev. = 156.90

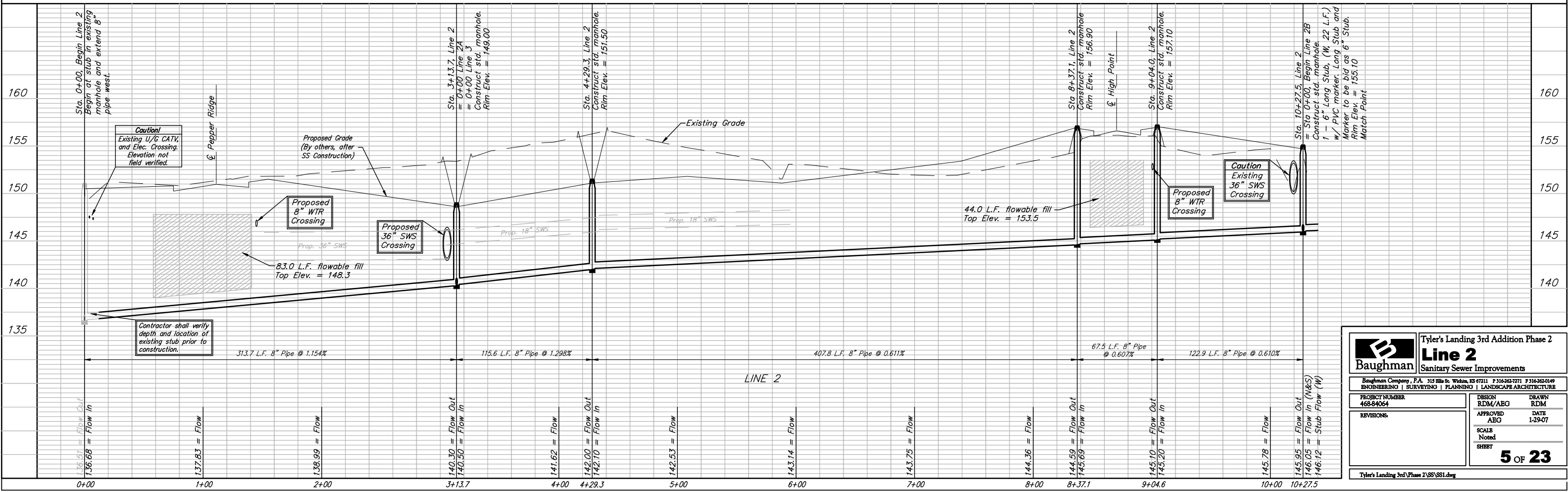
Sta. 9+04.6, Line 2
Construct std. manhole.
Rim Elev. = 157.10

Sta. 10+27.5, Line 2
= Sta 0+00, Begin Line 2B
Construct std. manhole.
1 - 6" Long Stub, (W, 22 L.F.)
w/ PVC marker. Long Stub and
Marker to be bid as 6" Stub.
Rim Elev. = 155.10
Match Point

SEWER SERVICE TABLE

NUMBER	TYPE	LOCATION			FOR INFORMATION ONLY	
		LOT NO.	BLOCK NO.	LINE NO.	STATION DIRECTION	APPROXIMATE LENGTH 4" PIPE VERTICAL HORIZONTAL
10	8" X 4" Tee	11	C	2	4+04/Lt.	5.5' 19.3'
11	8" X 4" Tee	12	C	2	4+77/Lt.	5.5' 15.0'
12	8" X 4" Tee	13	C	2	5+41/Lt.	5.0' 15.0'

NOTE: Vertical Riser Pipe shall be extended to 2' minimum above ground water elevation and 4' maximum below proposed ground elevation.



Baughman Tyler's Landing 3rd Addition Phase 2
Line 2
Sanitary Sewer Improvements

Baughman Company, P.A. 315 Ellis St. Wilkes, KS 67111 P 316-262-7771 F 316-262-0149
ENGINEERING | SURVEYING | PLANNING | LANDSCAPE ARCHITECTURE

PROJECT NUMBER 468-84064	DESIGN RDM/ABG	DRAWN RDM
REVISIONS	APPROVED ABG	DATE 1-29-07
SCALE Noted		SHEET 5 OF 23

Tyler's Landing 3rd Phase 2/SS/881.dwg