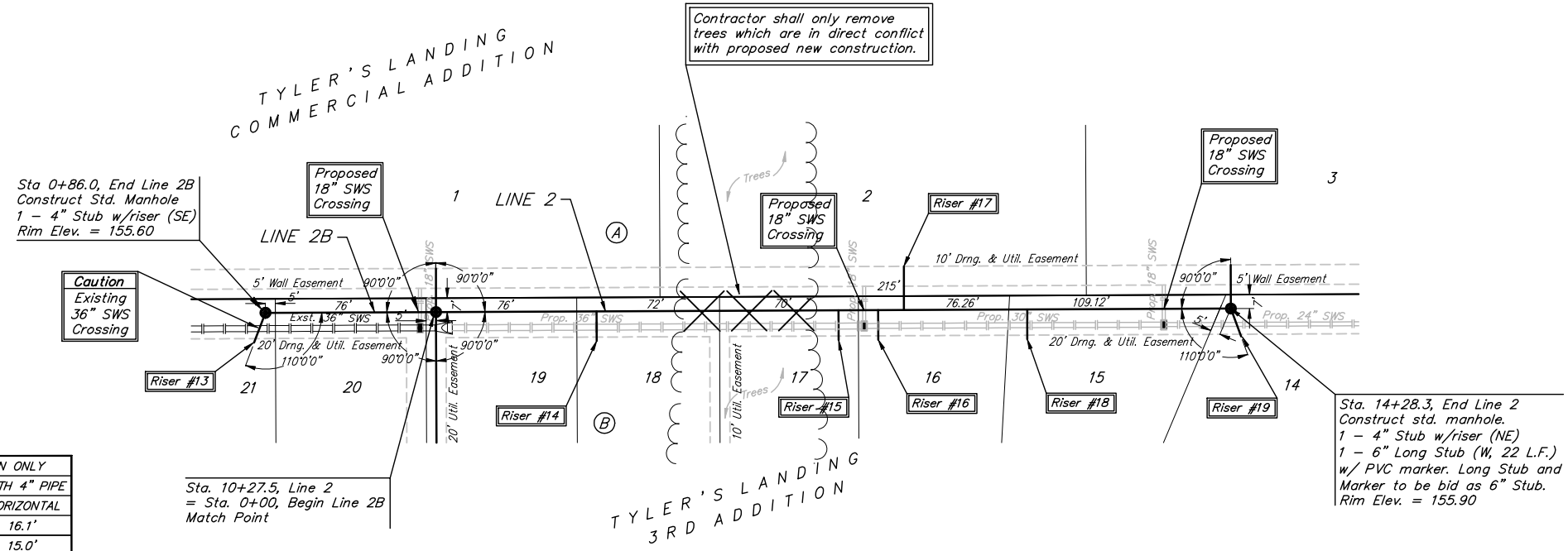


**Benchmarks:**  
 BM #1: "□" Cut in Middle of Curb  
 Inlet Top, North Curb of Conrey,  
 Adjacent to SW Corner of Lot 14,  
 Block A, Tyler's Landing 3rd Addition.  
 Elev. = 150.29 (1337.69 M.S.L.)

BM #2: "□" Cut in Top of East Curb  
 of High Point, 10' South of End of  
 Return. Adjacent to Lot 1, Block D,  
 Tyler's Landing Addition.  
 Elev. = 155.28 (1342.68 M.S.L.)

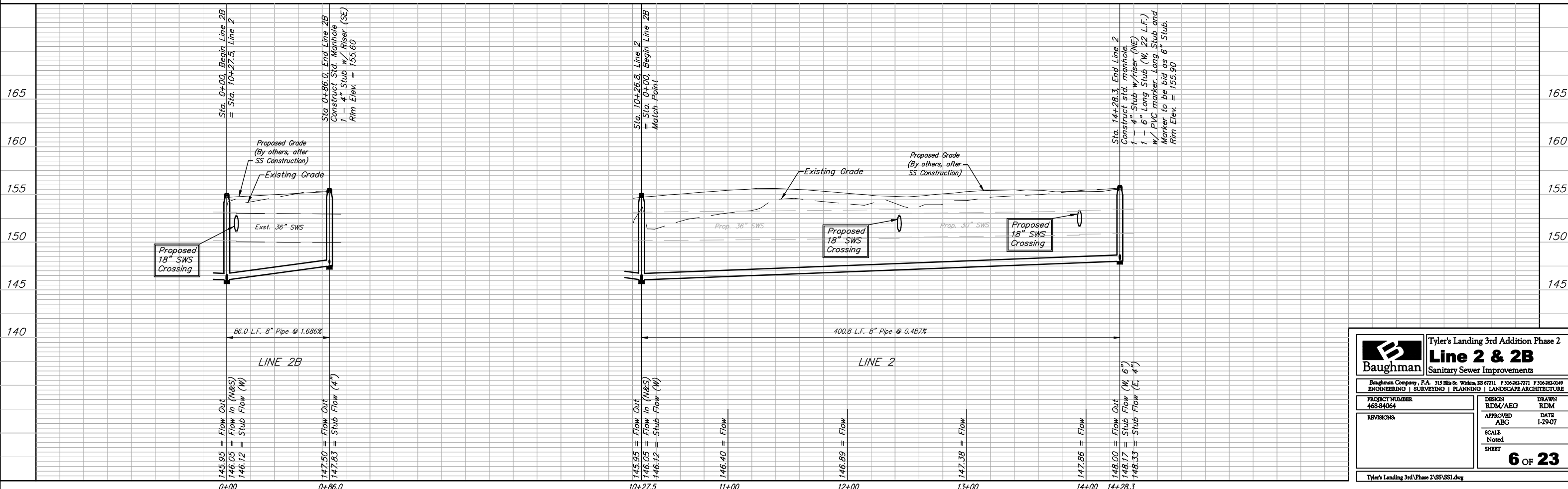
Scale: 1" = 40' Horizontal  
 1" = 5' Vertical  
 ● = Iron



SEWER SERVICE TABLE

NUMBER	TYPE	LOCATION			STATION \ DIRECTION	FOR INFORMATION ONLY	
		LOT NO.	BLOCK NO.	LINE NO.		APPROXIMATE LENGTH 4" PIPE	
					VERTICAL	HORIZONTAL	
13	4" Stub	21	B	2B	0+86/Lt.	4.0'	16.1'
14	8" X 4" Tee	18	B	2	11+09/Rt.	5.5'	15.0'
15	8" X 4" Tee	17	B	2	12+31/Rt.	4.5'	15.0'
16	8" X 4" Tee	16	B	2	12+51/Rt.	4.5'	15.0'
17*	8" X 6" Tee	2	A	2	12+64/Lt.	4.5'	22.0'
18	8" X 4" Tee	15	B	2	13+26/Rt.	4.5'	15.0'
19	4" Stub	14	B	2	14+28/Rt.	4.5'	15.0'

NOTE: Vertical Riser Pipe shall be extended to 2' minimum above ground water elevation and 4' maximum below proposed ground elevation.  
 \* Denotes Sewer Service for Tyler's Landing Commercial Addition. Risers shall be 6" pipe.



**Baughman** Tyler's Landing 3rd Addition Phase 2  
**Line 2 & 2B**  
 Sanitary Sewer Improvements

Baughman Company, P.A. 315 Ellis St. Wilkes, KS 67111 P 316-262-7771 F 316-262-0149  
 ENGINEERING | SURVEYING | PLANNING | LANDSCAPE ARCHITECTURE

PROJECT NUMBER: 468-84064  
 DESIGN: RDM/ABG DRAWN: RDM  
 APPROVED: ABG DATE: 1-29-07  
 REVISIONS:  
 SCALE: Noted  
 SHEET: **6 OF 23**

Tyler's Landing 3rd Phase 2\SS\SS1.dwg