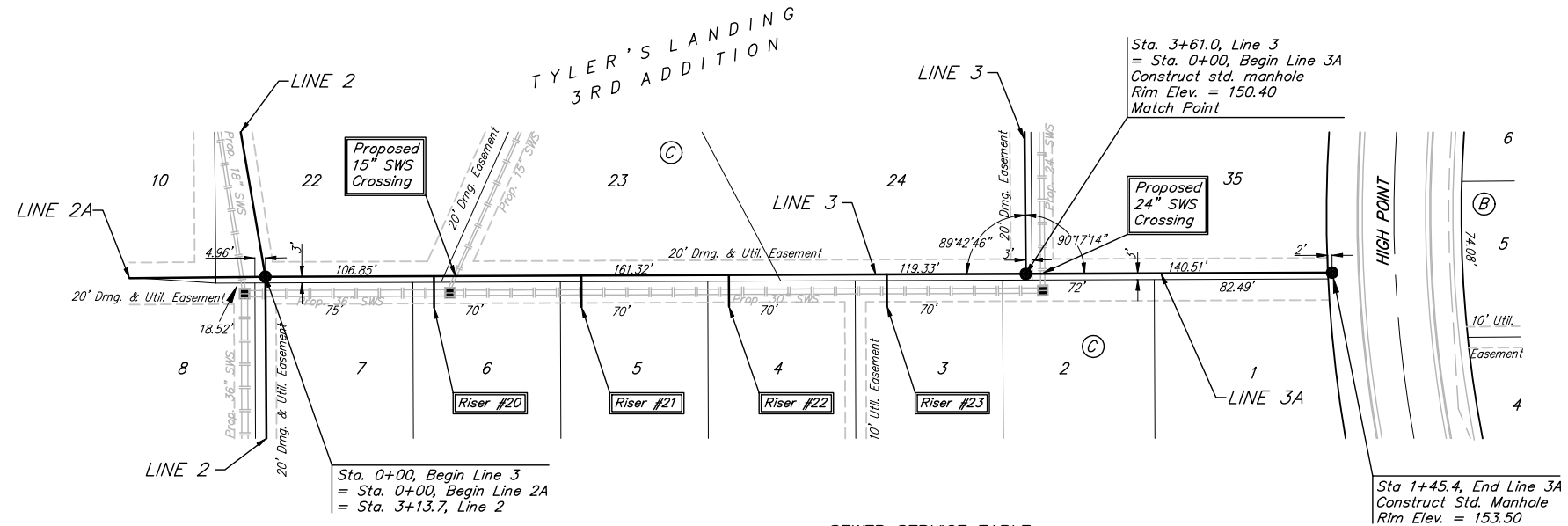


**Benchmarks:**  
 BM #1: "□" Cut in Middle of Curb Inlet Top, North Curb of Conrey, Adjacent to SW Corner of Lot 14, Block A, Tyler's Landing 3rd Addition. Elev. = 150.29 (1337.69 M.S.L.)

BM #2: "□" Cut in Top of East Curb of High Point, 10' South of End of Return. Adjacent to Lot 1, Block D, Tyler's Landing Addition. Elev. = 155.28 (1342.68 M.S.L.)

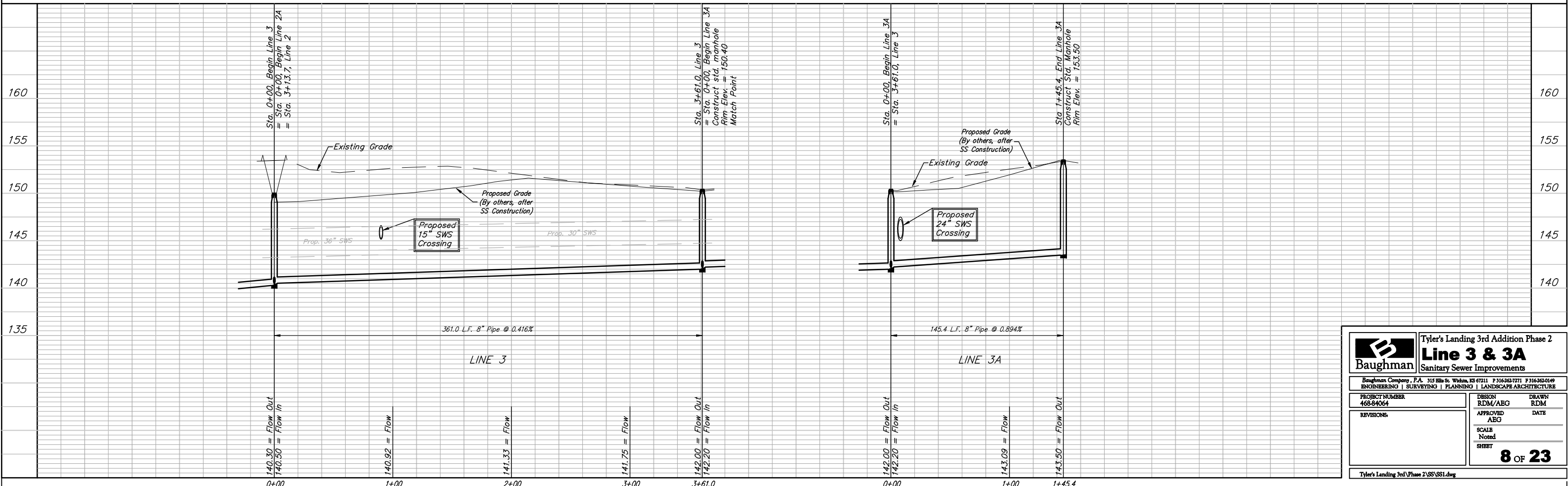
Scale: 1" = 40' Horizontal  
 1" = 5' Vertical  
 ● = Iron



SEWER SERVICE TABLE

NUMBER	TYPE	LOCATION			STATION \ DIRECTION	FOR INFORMATION ONLY	
		LOT NO.	BLOCK NO.	LINE NO.		APPROXIMATE LENGTH 4" PIPE	VERTICAL
20	8" X 4" Tee	6	C	3	0+80/Rt.	5.5'	15.0'
21	8" X 4" Tee	5	C	3	1+50/Rt.	6.0'	15.0'
22	8" X 4" Tee	4	C	3	2+20/Rt.	6.5'	15.0'
23	8" X 4" Tee	3	C	3	2+95/Rt.	5.5'	15.0'

NOTE: Vertical Riser Pipe shall be extended to 2' minimum above ground water elevation and 4' maximum below proposed ground elevation.



**Baughman** Tyler's Landing 3rd Addition Phase 2  
**Line 3 & 3A**  
 Sanitary Sewer Improvements

Baughman Company, P.A. 315 Ellis St. Wilkes, KS 67111 P 316-262-7771 F 316-262-0149  
 ENGINEERING | SURVEYING | PLANNING | LANDSCAPE ARCHITECTURE

PROJECT NUMBER: 468-84064  
 DESIGN: RDM/ABG DRAWN: RDM  
 APPROVED: ABG DATE:  
 REVISIONS:  
 SCALE: Noted  
 SHEET: **8 OF 23**

Tyler's Landing 3rd Phase 2/SS/SS1.dwg