

Benchmarks:
 BM #1: "□" Cut in Middle of Curb Inlet Top, North Curb of Conrey, Adjacent to SW Corner of Lot 14, Block A, Tyler's Landing 3rd Addition. Elev. = 150.29 (1337.69 M.S.L.)

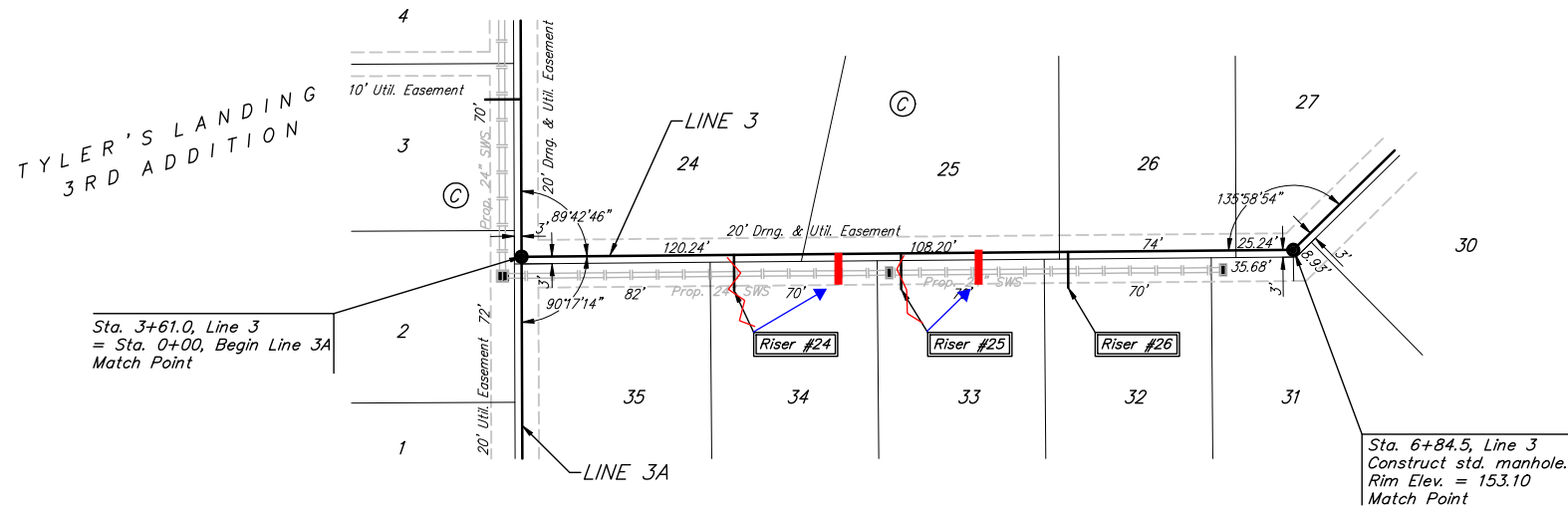
BM #2: "□" Cut in Top of East Curb of High Point, 10' South of End of Return. Adjacent to Lot 1, Block D, Tyler's Landing Addition. Elev. = 155.28 (1342.68 M.S.L.)

TYLER'S LANDING
 3RD ADDITION

Sta. 3+61.0, Line 3
 = Sta. 0+00, Begin Line 3A
 Match Point

Sta. 6+84.5, Line 3
 Construct std. manhole.
 Rim Elev. = 153.10
 Match Point

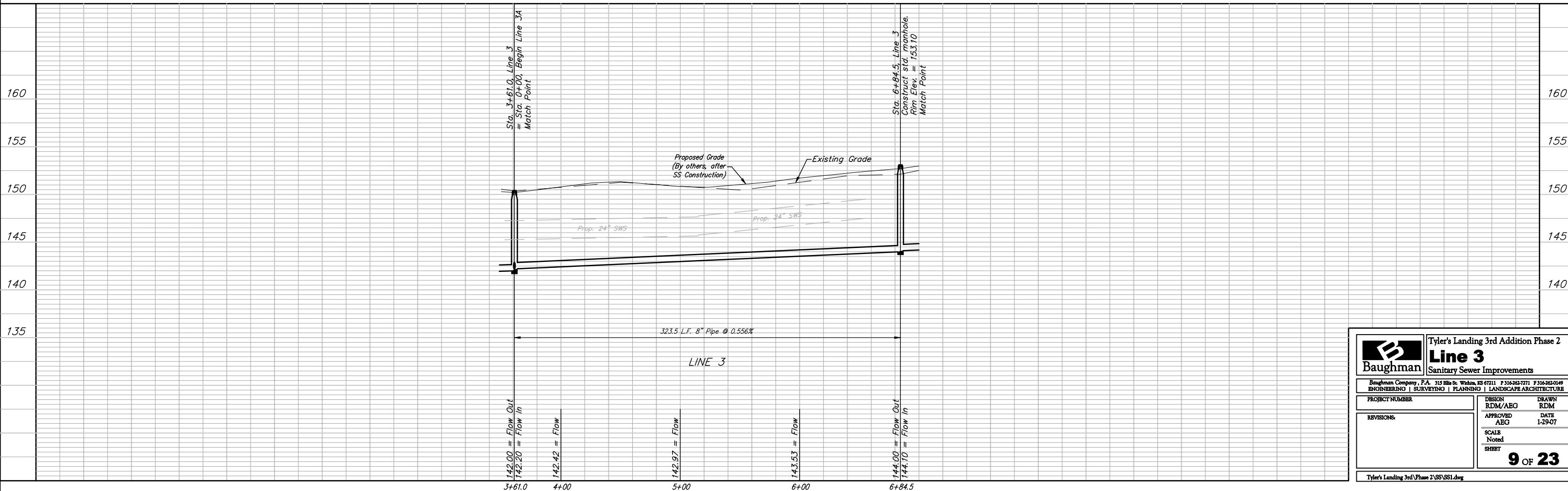
Scale: 1" = 40' Horizontal
 1" = 5' Vertical
 ● = Iron



SEWER SERVICE TABLE

NUMBER	TYPE	LOCATION				FOR INFORMATION ONLY	
		LOT NO.	BLOCK NO.	LINE NO.	STATION DIRECTION	APPROXIMATE LENGTH 4" PIPE VERTICAL	HORIZONTAL
24	8" X 4" Tee	34	C	3	4+80/Rt.	96	5.5'
25	8" X 4" Tee	33	C	3	5+80/Rt.	51	4.0'
26	8" X 4" Tee	32	C	3	5+90/Rt.		4.5'

NOTE: Vertical Riser Pipe shall be extended to 2' minimum above ground water elevation and 4' maximum below proposed ground elevation.



Baughman Tyler's Landing 3rd Addition Phase 2
Line 3
 Sanitary Sewer Improvements

Baughman Company, P.A. 315 Ellis St. Wilkes, KS 67111 P 316-262-7771 F 316-262-0149
 ENGINEERING | SURVEYING | PLANNING | LANDSCAPE ARCHITECTURE

PROJECT NUMBER	DESIGN RDM/ABG	DRAWN RDM
REVISIONS	APPROVED ABG	DATE 1-29-07
SCALE Noted		SHEET

9 OF 23

Tyler's Landing 3rd Phase 2\SS\SS1.dwg