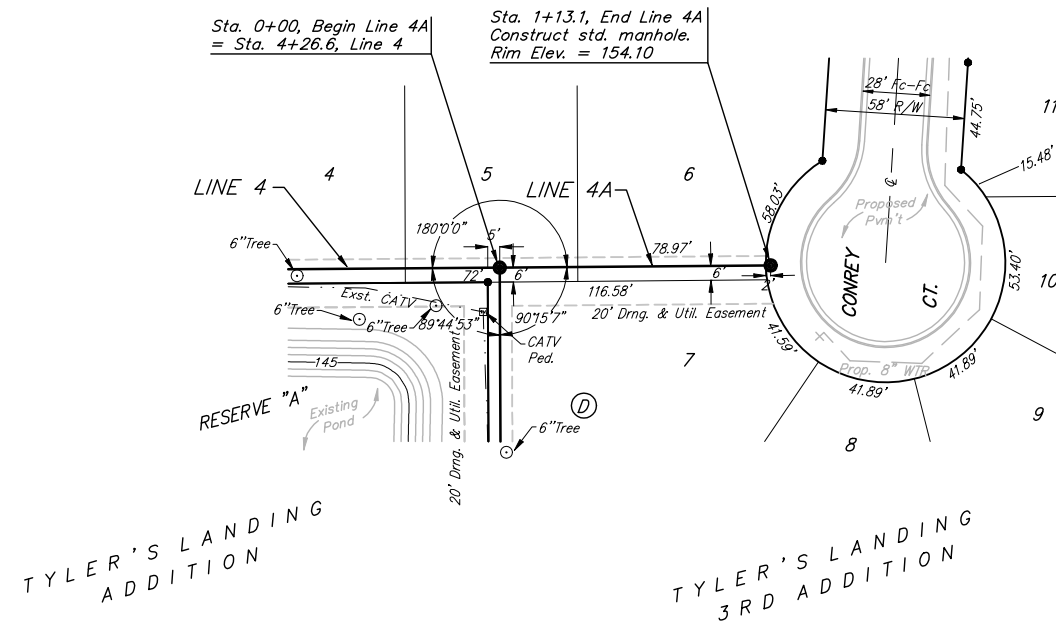
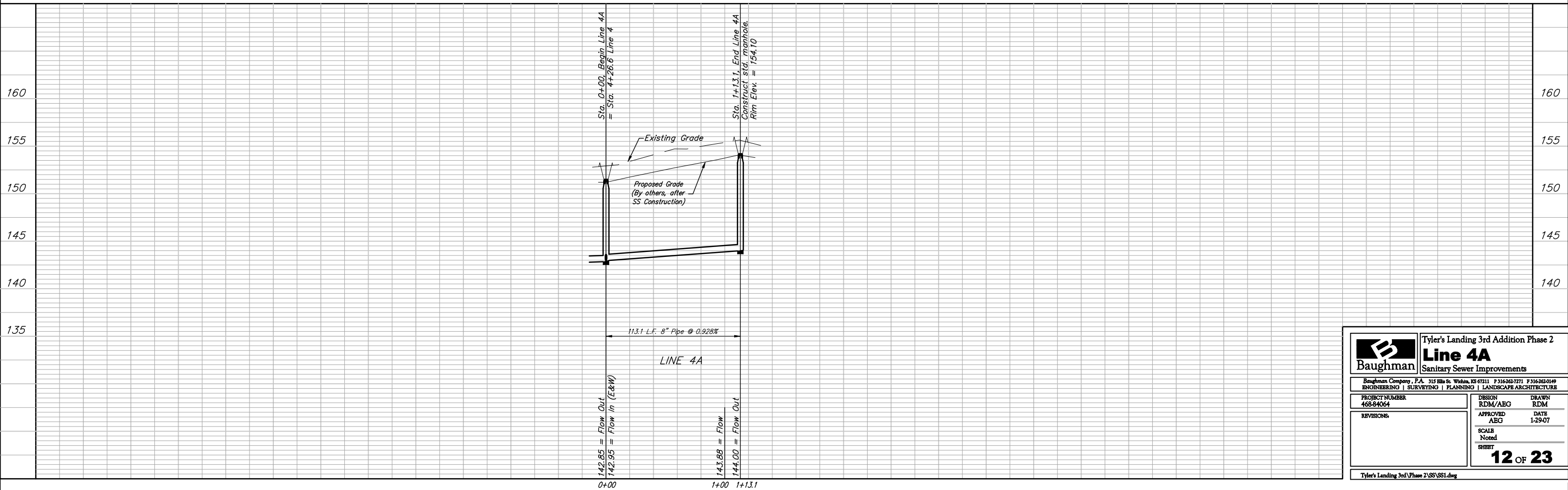


Benchmarks:
 BM #1: "□" Cut in Middle of Curb Inlet Top, North Curb of Conrey, Adjacent to SW Corner of Lot 14, Block A, Tyler's Landing 3rd Addition. Elev. = 150.29 (1337.69 M.S.L.)

BM #2: "□" Cut in Top of East Curb of High Point, 10' South of End of Return. Adjacent to Lot 1, Block D, Tyler's Landing Addition. Elev. = 155.28 (1342.68 M.S.L.)



Scale: 1" = 40' Horizontal
 1" = 5' Vertical
 ● = Iron



		Tyler's Landing 3rd Addition Phase 2	
		Line 4A	
Sanitary Sewer Improvements		ENGINEERING SURVEYING PLANNING LANDSCAPE ARCHITECTURE	
Baughman Company, P.A. 315 Ellis St. Wilkes, KS 67111 P 316-262-7771 F 316-262-0149 468-84064		DESIGN: RDM/ABG DRAWN: RDM APPROVED: ABG DATE: 1-29-07 SCALE: Noted SHEET: 12 OF 23	
PROJECT NUMBER: 468-84064 REVISIONS:		Tyler's Landing 3rd Phase 2/SS/SS1.dwg	