

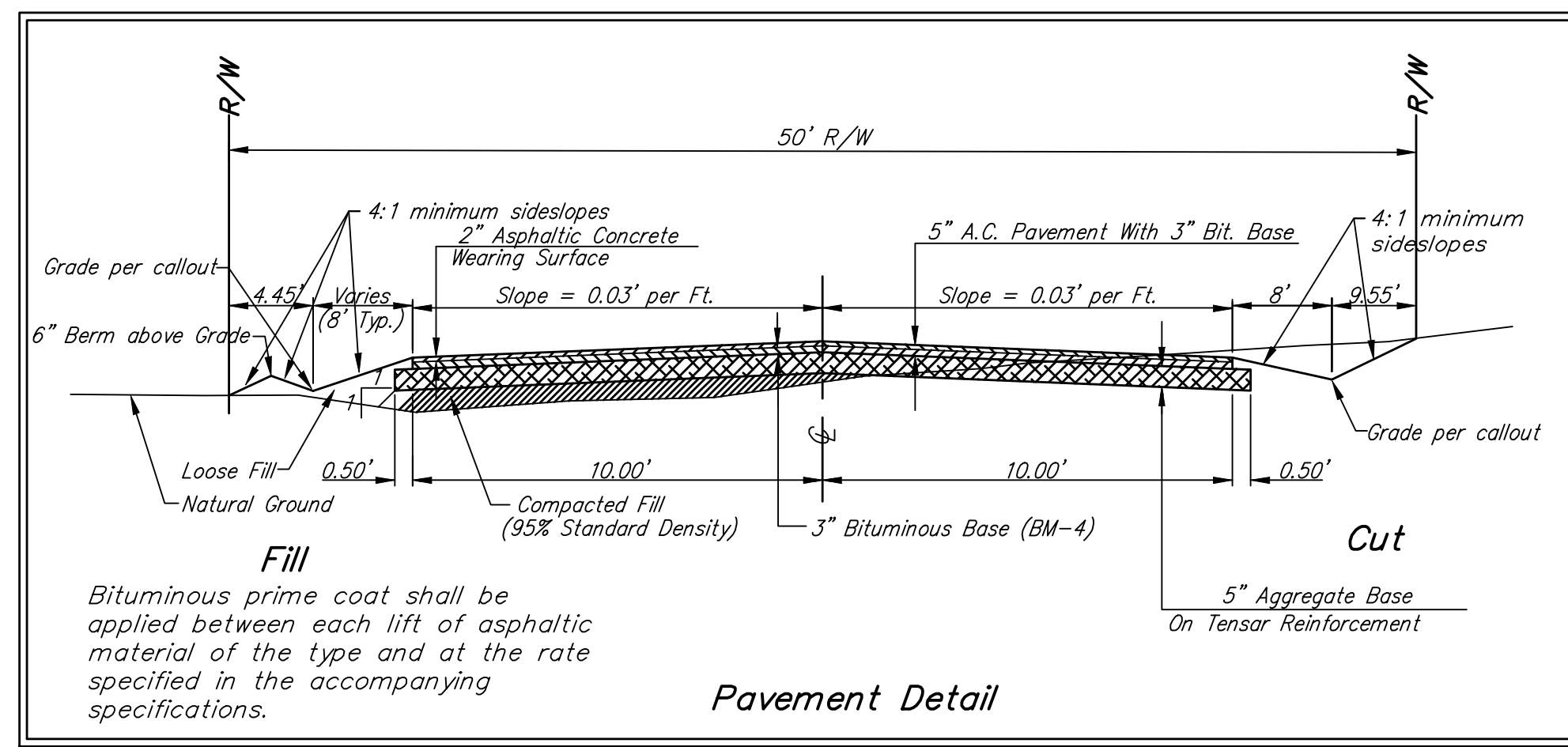
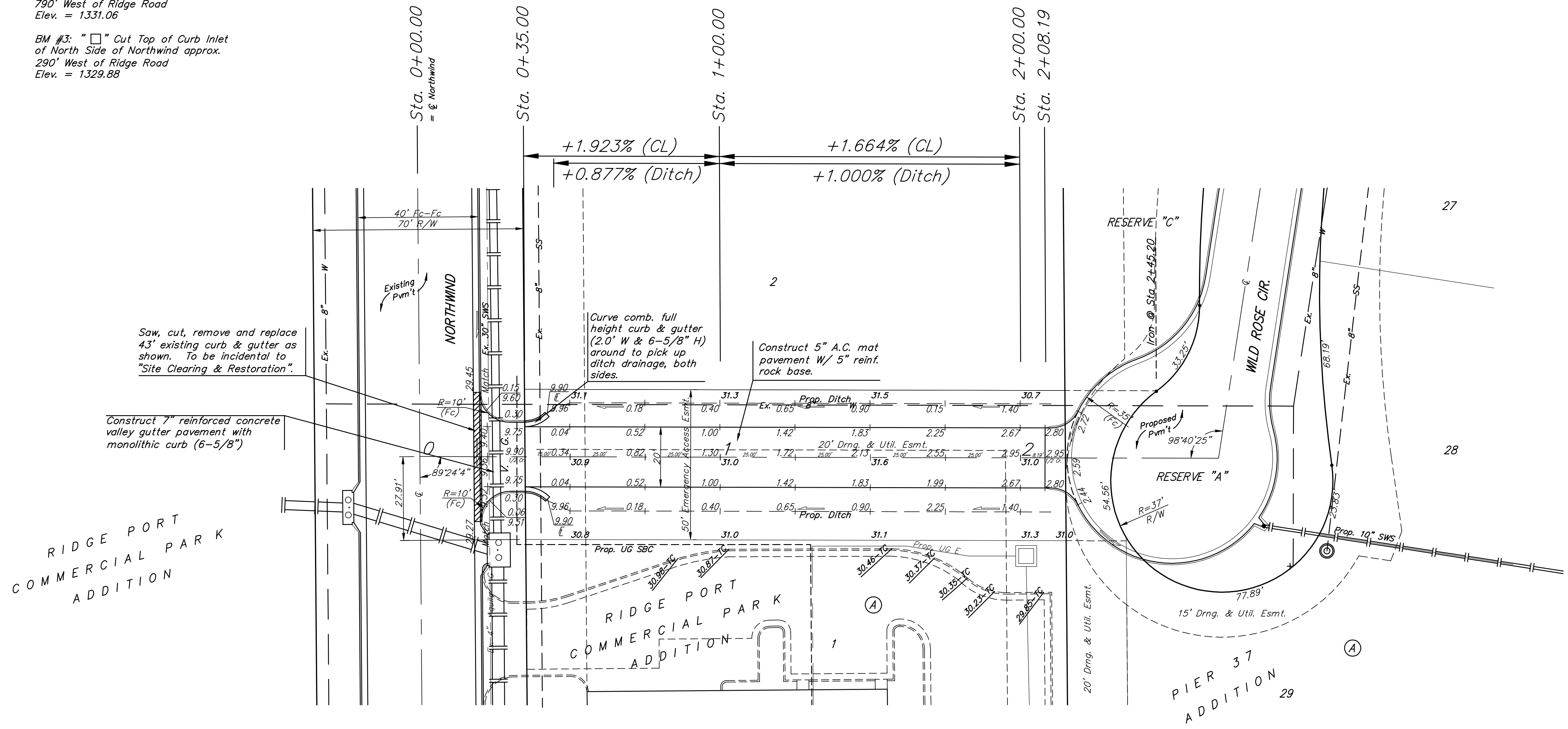
BENCHMARKS:
 BM #1: RR Spike on North Face of Power Pole approx. 1660' West of Ridge Road in South R/W of 37th St. N.
 Elev. = 1331.57

BM #2: "□" Cut Top of Curb Inlet on North Side of Northwind approx. 790' West of Ridge Road
 Elev. = 1331.06

BM #3: "□" Cut Top of Curb Inlet on North Side of Northwind approx. 290' West of Ridge Road
 Elev. = 1329.88

P. V.I.
 Elev. = 1331.30
 No V.C.

Scale: 1" = 20'
 • = Iron



7
 8
 9
 10
 11
 12
 13
 14
 15
 16
 17
 18
 19
 20
 21
 22
 23
 24
 25
 26
 27
 28
 29
 30
 31
 32
 33
 34
 35
 36
 37
 38
 39
 40
 41
 42
 43
 44
 45
 46
 47
 48
 49
 50
 51
 52
 53
 54
 55
 56
 57
 58
 59
 60
 61
 62
 63
 64
 65
 66
 67
 68
 69
 70
 71
 72
 73
 74
 75
 76
 77
 78
 79
 80
 81
 82
 83
 84
 85
 86
 87
 88
 89
 90
 91
 92
 93
 94
 95
 96
 97
 98
 99
 100

Baughman		PIER 37 ADDITION	
		A.C. Mat Hookup	
Baughman Company, P.A. 315 Ella St. Wichita, KS 67211 P 316-262-7171 F 316-262-0149 ENGINEERING SURVEYING PLANNING LANDSCAPE ARCHITECTURE			
PROJECT NUMBER	DESIGN	DRAWN	
	APPROVED	JEB	JEB/TMS
	AEG	DATE	
		04/07	
REVISIONS:	SCALE	Noted	
	SHEET	7 OF 36	