

BENCHMARKS:

BM #1: RR Spike on North Face of Power Pole approx. 1660' West of Ridge Road in South R/W of 37th St. N.
Elev. = 1331.57

BM #2: "□" Cut Top of Curb Inlet on North Side of Northwind approx. 790' West of Ridge Road
Elev. = 1331.06

BM #3: "□" Cut Top of Curb Inlet on North Side of Northwind approx. 290' West of Ridge Road
Elev. = 1329.88

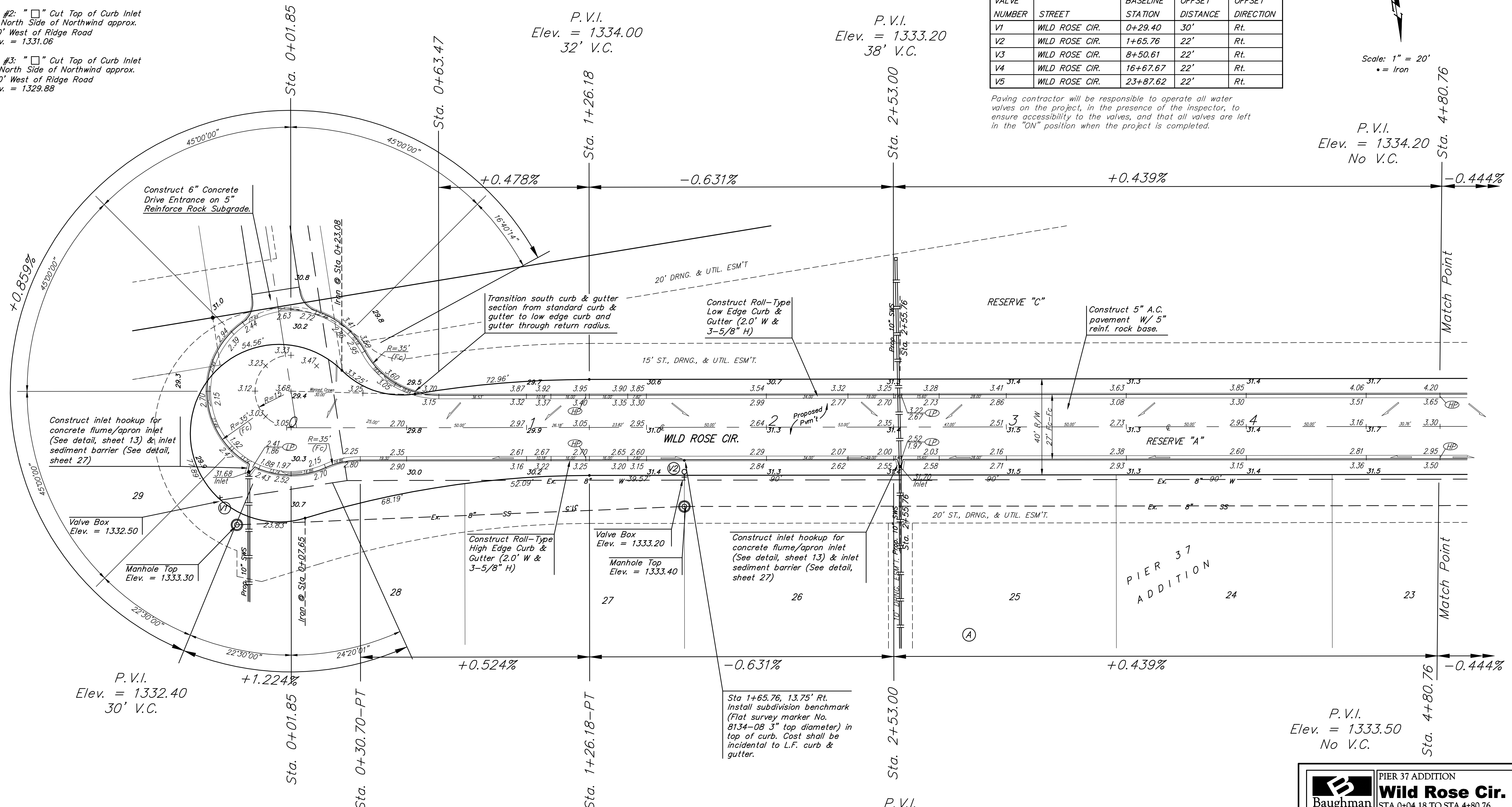
WATER VALVE LOCATION TABLE

VALVE NUMBER	STREET	BASELINE STATION	OFFSET DISTANCE	OFFSET DIRECTION
V1	WILD ROSE CIR.	0+29.40	30'	Rt.
V2	WILD ROSE CIR.	1+65.76	22'	Rt.
V3	WILD ROSE CIR.	8+50.61	22'	Rt.
V4	WILD ROSE CIR.	16+67.67	22'	Rt.
V5	WILD ROSE CIR.	23+87.62	22'	Rt.

Paving contractor will be responsible to operate all water valves on the project, in the presence of the inspector, to ensure accessibility to the valves, and that all valves are left in the "ON" position when the project is completed.

Scale: 1" = 20'
• = Iron

P.V.I.
Elev. = 1334.20
No V.C.



P.V.I.
Elev. = 1332.40
30' V.C.

P.V.I.
Elev. = 1334.00
32' V.C.

P.V.I.
Elev. = 1333.20
38' V.C.

P.V.I.
Elev. = 1333.30
32' V.C.

P.V.I.
Elev. = 1332.50
38' V.C.

P.V.I.
Elev. = 1333.50
No V.C.

NOTE: ROLL TYPE CURB & GUTTER TO BE CONSTRUCTED ON THE PAVEMENT SHOWN ON THIS SHEET. TOP OF CURB ELEVATIONS ARE GIVEN FOR FULL HEIGHT CURB.

		PIER 37 ADDITION	
		Wild Rose Cir.	
STA 0+04.18 TO STA 4+80.76 <small>Baughman Company, P.A. 315 Ella St. Wichita, KS 67211 P 316-262-7171 F 316-262-0149 ENGINEERING SURVEYING PLANNING LANDSCAPE ARCHITECTURE</small>		DESIGN	DRAWN
PROJECT NUMBER		JEB	JEB/TMS
REVISIONS:		APPROVED	DATE
		AEG	04/07
		SCALE	Noted
		SHEET	8 OF 36