

BENCHMARKS:
 BM #1: RR Spike on North Face of Power Pole approx. 1660' West of Ridge Road in South R/W of 37th St. N.
 Elev. = 1331.57

BM #2: "□" Cut Top of Curb Inlet on North Side of Northwind approx. 790' West of Ridge Road
 Elev. = 1331.06

BM #3: "□" Cut Top of Curb Inlet of North Side of Northwind approx. 290' West of Ridge Road
 Elev. = 1329.88

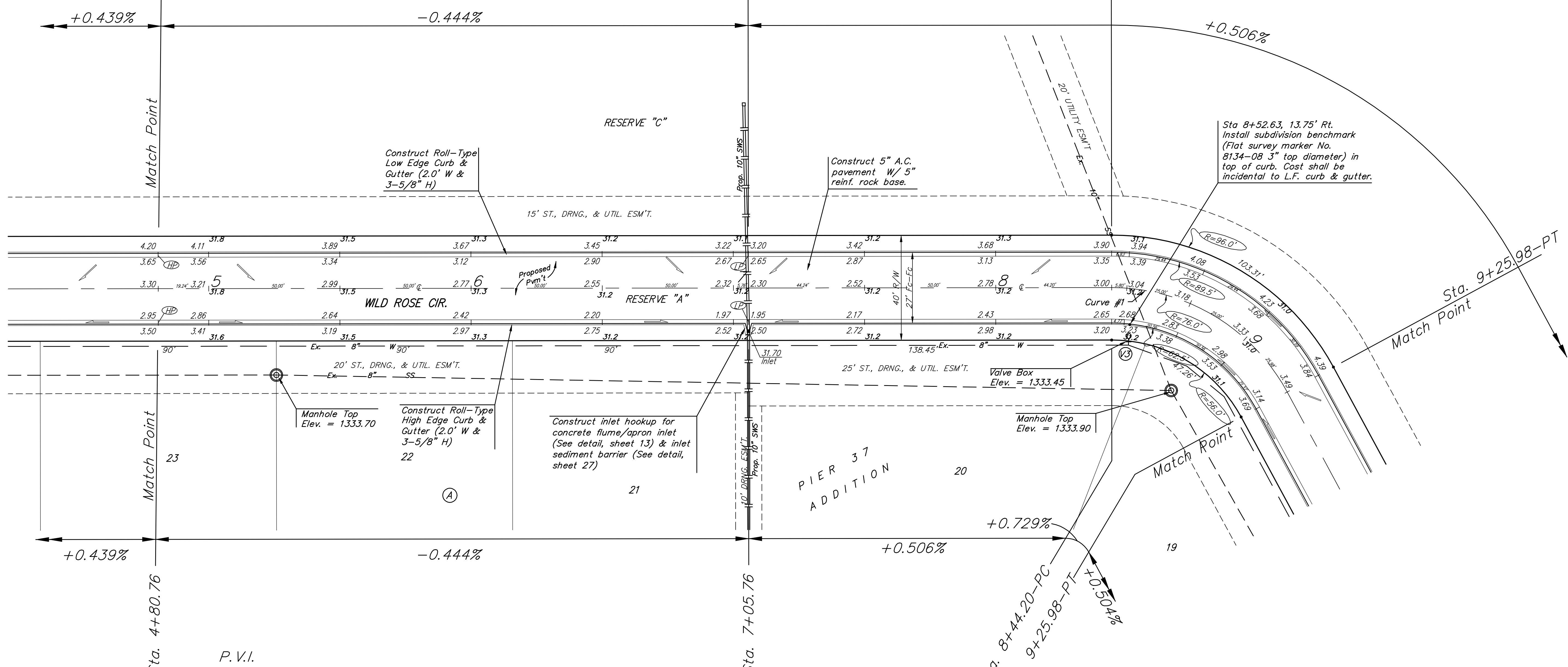
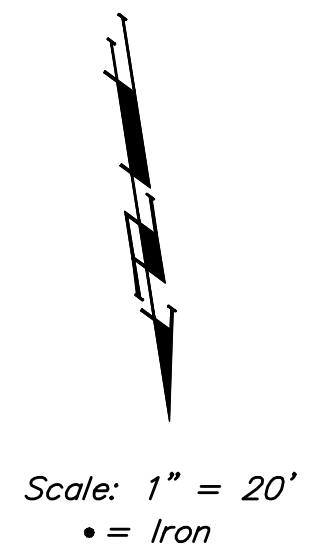
P.V.I.
 Elev. = 1334.20
 No V.C.

P.V.I.
 Elev. = 1333.20
 No V.C.

Sta. 4+80.76
 Match Point

Sta. 7+05.76
 Match Point

Sta. 8+44.20-PC



Sta. 4+80.76
 Match Point

Sta. 7+05.76
 Match Point

Sta. 8+44.20-PC

Sta. 9+25.98-PT

P.V.I.
 Elev. = 1333.50
 No V.C.

P.V.I.
 Elev. = 1332.50
 No V.C.

P.V.I.
 Elev. = 1333.20
 No V.C.

P.V.I.
 Elev. = 1333.69
 No V.C.

NOTE: ROLL TYPE CURB & GUTTER TO BE CONSTRUCTED ON THE PAVEMENT SHOWN ON THIS SHEET. TOP OF CURB ELEVATIONS ARE GIVEN FOR FULL HEIGHT CURB.

Curve #1
 Curve Data Based on Centerline
 Rad. = 76' Delta = 61°39'29" Tangent = 45.36'
 Arc = 81.78' L.C. = 77.90' Def/Ft. = 22.61852 Min.

Station	Arc	FACE CHORD LENGTHS		Defl.	T. Defl.
		8' Lt.	8' Rt.		
8+44.20	-	-	-	0°00'00"	0°00'00"
8+50.00	5.80'	7.44'	4.16'	2°11'11"	2°11'11"
8+75.00	25.00'	31.93'	17.85'	9°25'28"	11°36'39"
9+00.00	25.00'	31.93'	17.85'	9°25'28"	21°02'07"
9+25.00	25.00'	31.93'	17.85'	9°25'28"	30°27'35"
9+25.98	0.98'	1.26'	0.70'	0°22'01"	30°49'45"

	PIER 37 ADDITION	
	Wild Rose Cir.	
STA 4+80.76 TO STA 9+25.98		
Baughman Company, P.A. 315 Ella St. Woburn, MA 01897 P 316-262-7771 F 316-262-0149		
ENGINEERING SURVEYING PLANNING LANDSCAPE ARCHITECTURE		
PROJECT NUMBER	DESIGN	DRAWN
REVISIONS:	APPROVED	DATE
	AEG	04/07
	SCALE	Noted
	SHEET	
	9 OF 36	