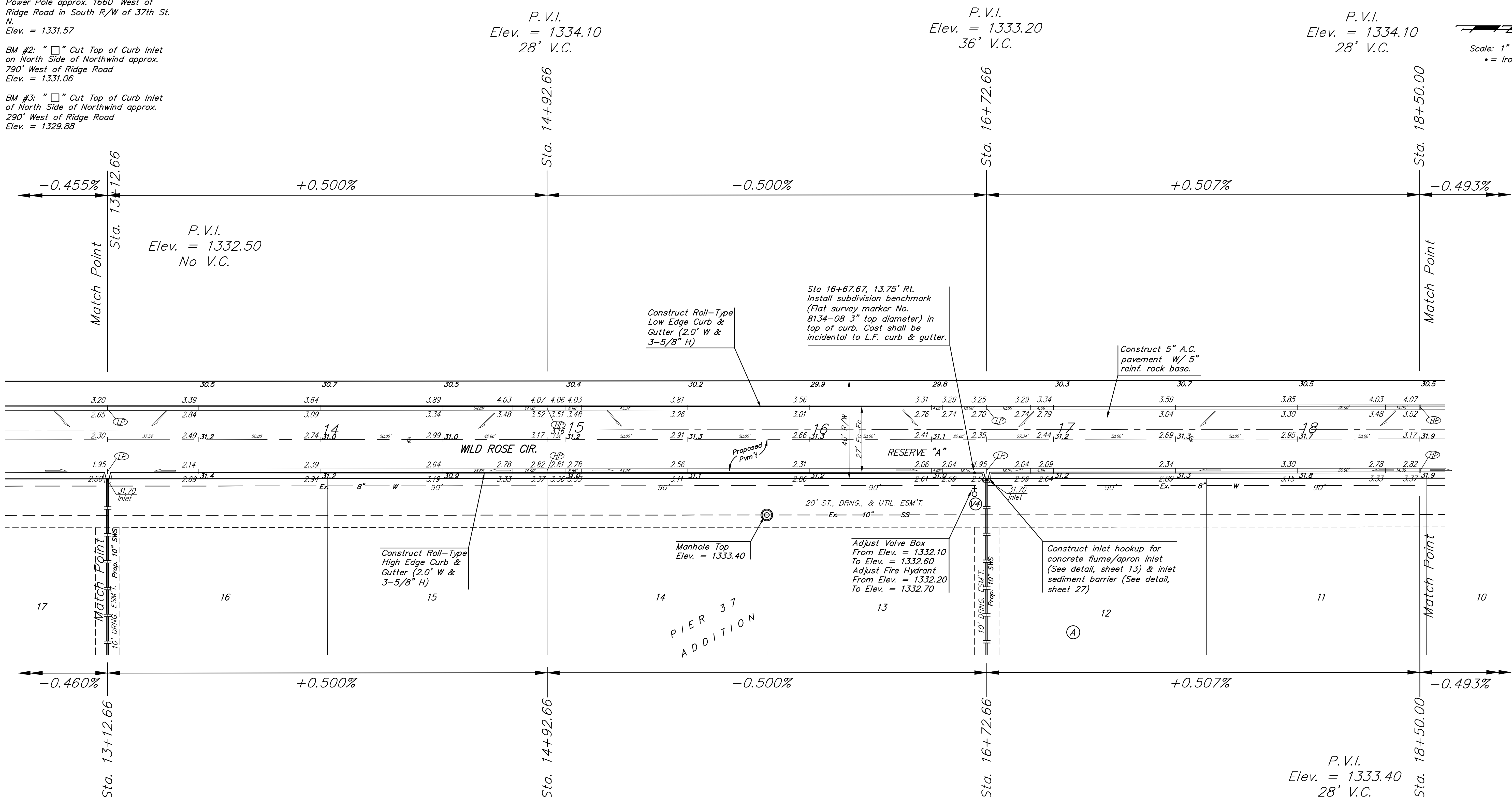
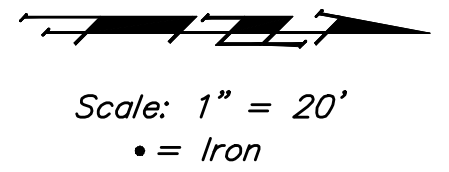


**BENCHMARKS:**  
 BM #1: RR Spike on North Face of Power Pole approx. 1660' West of Ridge Road in South R/W of 37th St. N. Elev. = 1331.57

BM #2: "□" Cut Top of Curb Inlet on North Side of Northwind approx. 790' West of Ridge Road Elev. = 1331.06

BM #3: "□" Cut Top of Curb Inlet on North Side of Northwind approx. 290' West of Ridge Road Elev. = 1329.88



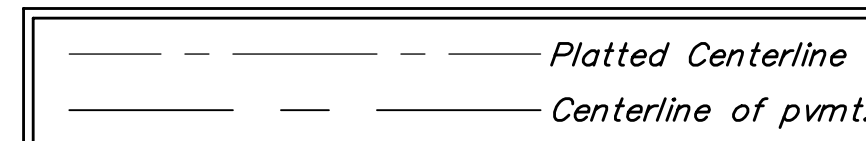
P.V.I.  
Elev. = 1332.50  
No V.C.

P.V.I.  
Elev. = 1333.40  
28' V.C.

P.V.I.  
Elev. = 1332.50  
36' V.C.

P.V.I.  
Elev. = 1333.40  
28' V.C.

NOTE: ROLL TYPE CURB & GUTTER TO BE CONSTRUCTED ON THE PAVEMENT SHOWN ON THIS SHEET. TOP OF CURB ELEVATIONS ARE GIVEN FOR FULL HEIGHT CURB.



<b>Baughman</b>		PIER 37 ADDITION	
		<b>Wild Rose Cir.</b>	
		STA 13+12.66 TO STA 18+50.00	
Baughman Company, P.A. 315 Ella St. Waltham, MA 02451 P 316-262-7711 F 316-262-0149			
ENGINEERING   SURVEYING   PLANNING   LANDSCAPE ARCHITECTURE			
PROJECT NUMBER	DESIGN	JEB	DRAWN
	APPROVED	AEG	DATE
			04/07
REVISIONS:	SCALE	Noted	
		SHEET	
		<b>11 OF 36</b>	