

BENCHMARKS:
 BM #1: RR Spike on North Face of Power Pole approx. 1660' West of Ridge Road in South R/W of 37th St. N.
 Elev. = 1331.57

BM #2: "□" Cut Top of Curb Inlet on North Side of Northwind approx. 790' West of Ridge Road
 Elev. = 1331.06

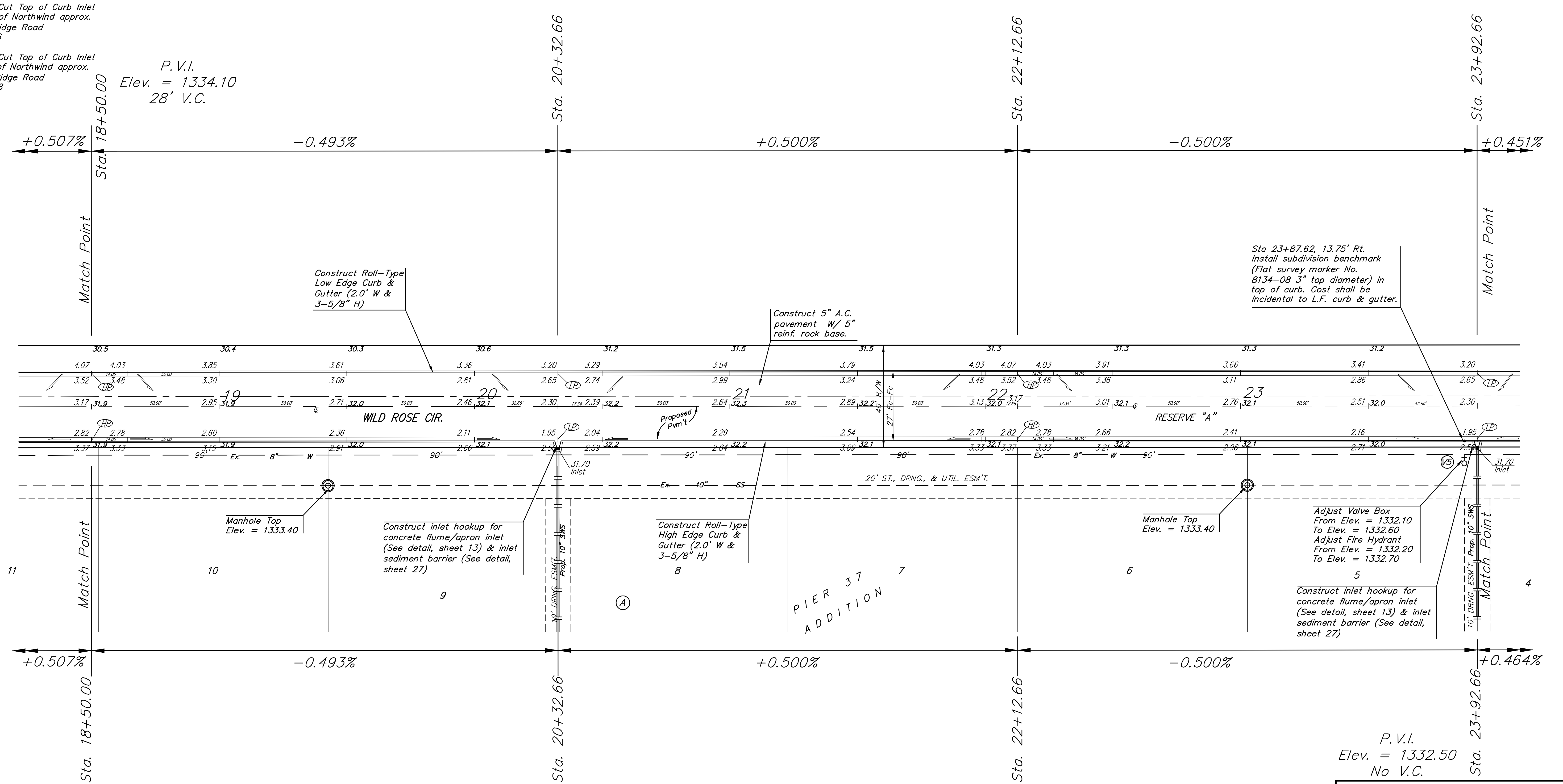
BM #3: "□" Cut Top of Curb Inlet of North Side of Northwind approx. 290' West of Ridge Road
 Elev. = 1329.88

P.V.I.
 Elev. = 1333.20
 No V.C.

P.V.I.
 Elev. = 1334.10
 28' V.C.

Scale: 1" = 20'
 • = Iron

P.V.I.
 Elev. = 1333.20
 No V.C.



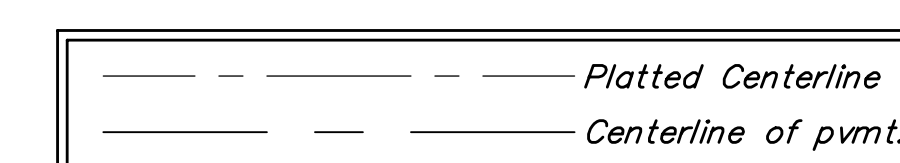
P.V.I.
 Elev. = 1333.40
 28' V.C.

P.V.I.
 Elev. = 1332.50
 No V.C.

P.V.I.
 Elev. = 1333.40
 28' V.C.

P.V.I.
 Elev. = 1332.50
 No V.C.

NOTE: ROLL TYPE CURB & GUTTER TO BE CONSTRUCTED ON THE PAVEMENT SHOWN ON THIS SHEET. TOP OF CURB ELEVATIONS ARE GIVEN FOR FULL HEIGHT CURB.



Baughman		PIER 37 ADDITION	
		Wild Rose Cir.	
		STA 18+50.00 TO STA 23+92.66	
<small>Baughman Company, P.A. 315 Ella St. Wichita, KS 67211 P 316-262-7171 F 316-262-0149 ENGINEERING SURVEYING PLANNING LANDSCAPE ARCHITECTURE</small>			
PROJECT NUMBER	DESIGN	DRAWN	
	JEB	JEB/TMS	
REVISIONS:	APPROVED	DATE	
	AEG	04/07	
	SCALE	Noted	
	SHEET	12 OF 36	