

BENCHMARKS:
 BM #1: RR Spike on North Face of Power Pole approx. 1660' West of Ridge Road in South R/W of 37th St. N. Elev. = 1331.57

BM #2: "□" Cut Top of Curb Inlet on North Side of Northwind approx. 790' West of Ridge Road Elev. = 1331.06

BM #3: "□" Cut Top of Curb Inlet on North Side of Northwind approx. 290' West of Ridge Road Elev. = 1329.88

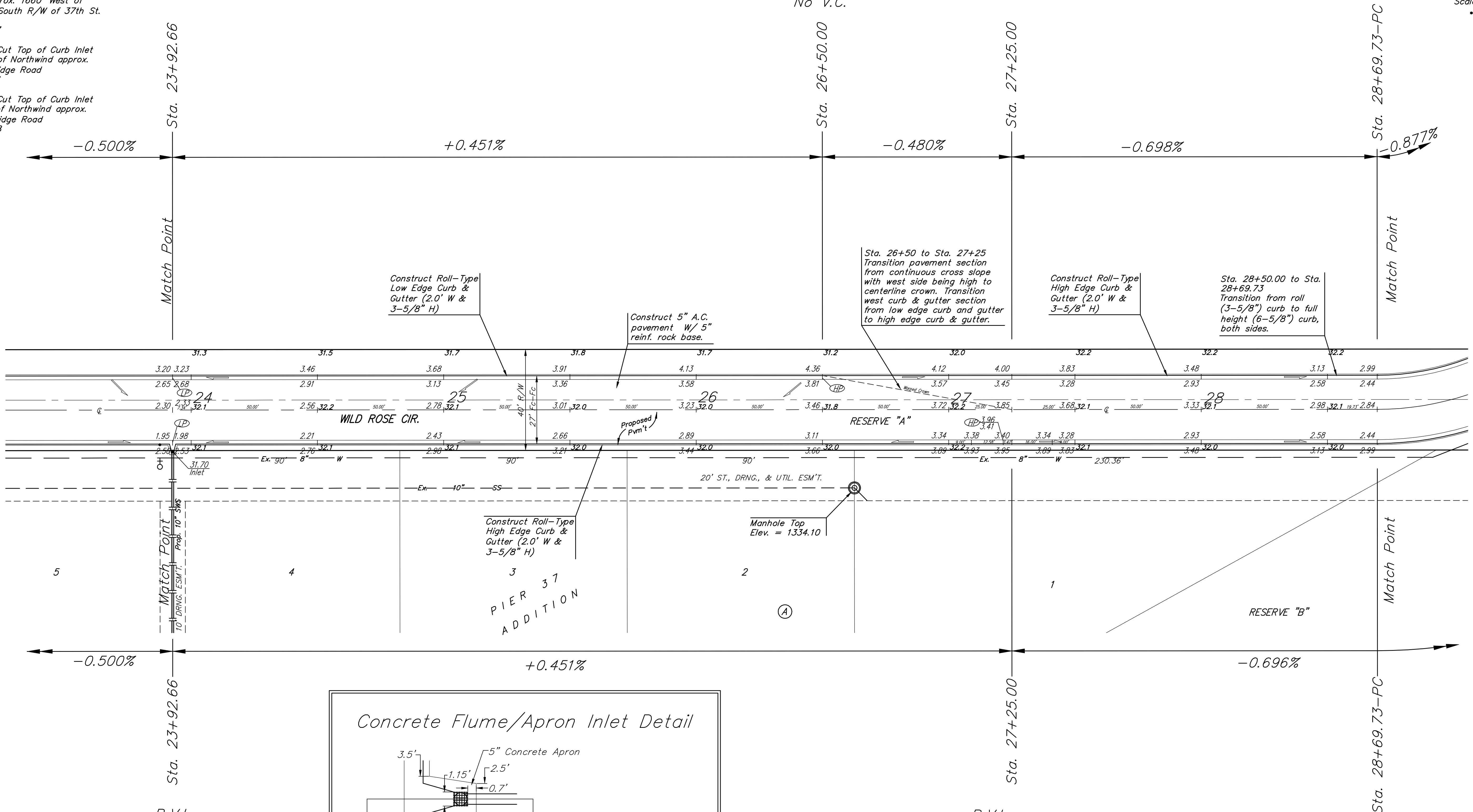
P.V.I.
 Elev. = 1333.20
 No V.C.

P.V.I.
 Elev. = 1334.36
 No V.C.

P.V.I.
 Elev. = 1334.00
 No V.C.

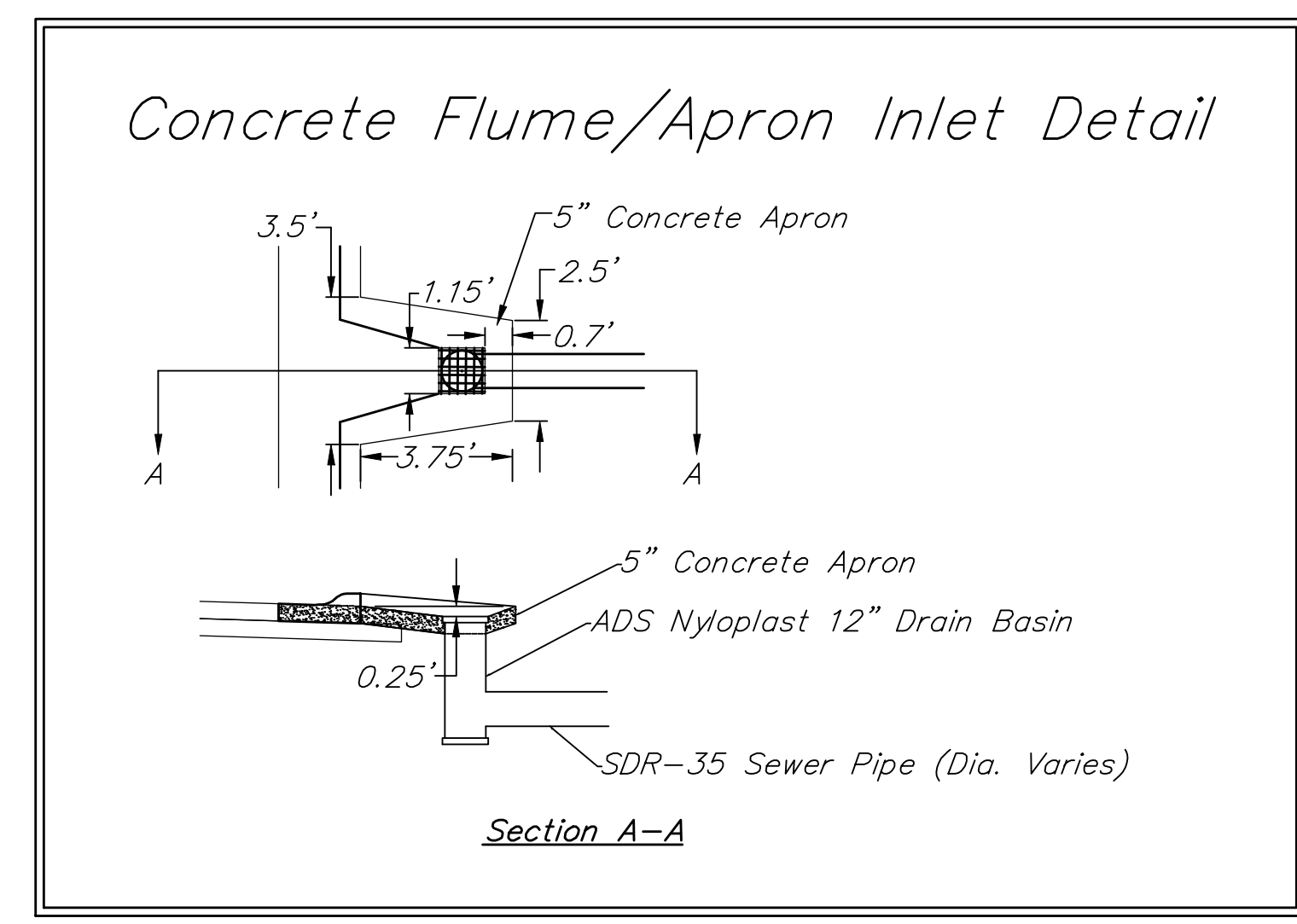
P.V.I.
 Elev. = 1332.99
 No V.C.

Scale: 1" = 20'
 • = Iron



P.V.I.
 Elev. = 1332.50
 No V.C.

P.V.I.
 Elev. = 1334.00
 32' V.C.



NOTE: ROLL TYPE CURB & GUTTER TO BE CONSTRUCTED ON THE PAVEMENT SHOWN ON THIS SHEET. TOP OF CURB ELEVATIONS ARE GIVEN FOR FULL HEIGHT CURB.

Platted Centerline
 Centerline of pvmt.

Baughman		PIER 37 ADDITION Wild Rose Cir. STA 23+92.66 TO STA 28+69.73	
Baughman Company, P.A. 315 Ella St. Wichita, KS 67211 P 316-262-7171 F 316-262-0149 ENGINEERING SURVEYING PLANNING LANDSCAPE ARCHITECTURE			
PROJECT NUMBER	DESIGN	DRAWN	
	JEB	JEB	TMS
REVISIONS:	APPROVED	DATE	
	AEG	04/07	
	SCALE	Noted	
	SHEET	13 OF 36	