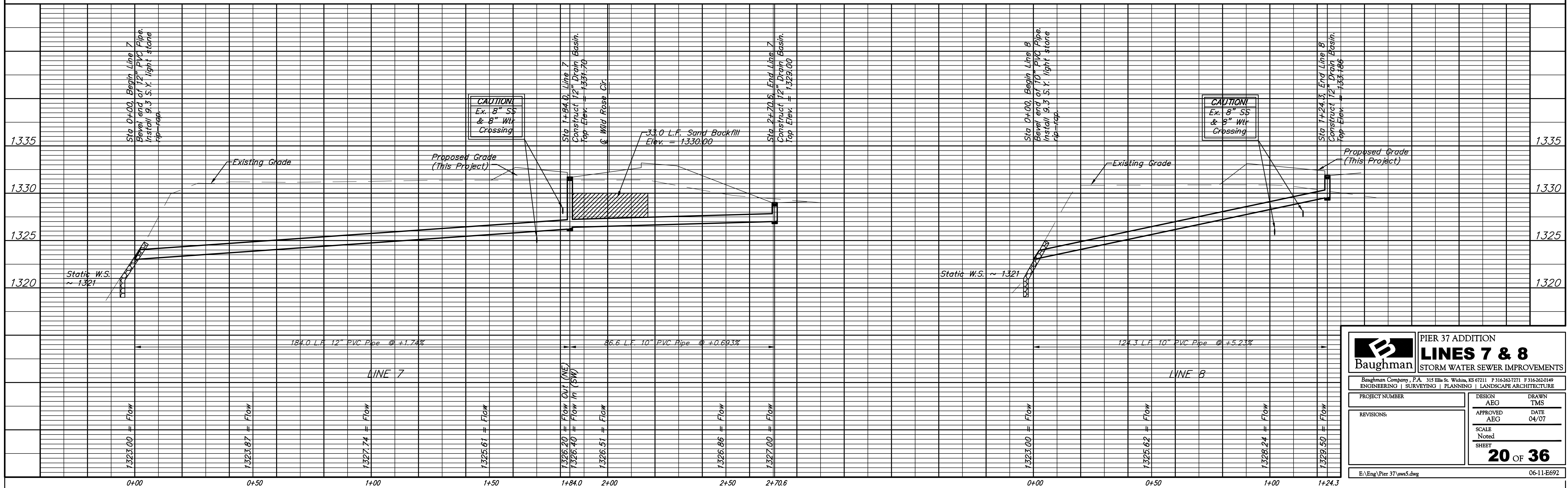
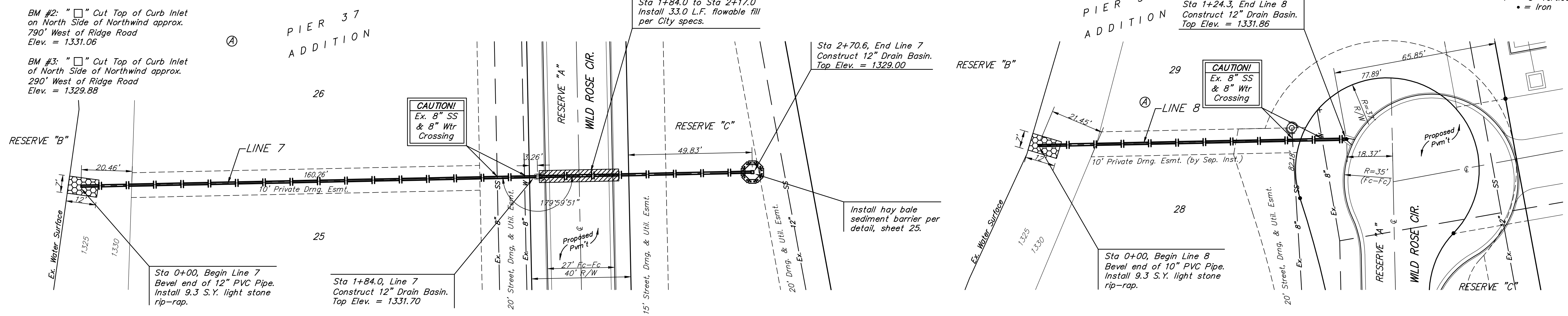


**BENCHMARKS:**  
 BM #1: RR Spike on North Face of Power Pole approx. 1660' West of Ridge Road in South R/W of 37th St. N. Elev. = 1331.57

BM #2: " " Cut Top of Curb Inlet on North Side of Northwind approx. 790' West of Ridge Road Elev. = 1331.06

BM #3: " " Cut Top of Curb Inlet of North Side of Northwind approx. 290' West of Ridge Road Elev. = 1329.88

Scale: 1" = 20' Horizontal  
 1" = 5' Vertical  
 • = Iron



**Baughman**

PIER 37 ADDITION  
**LINES 7 & 8**  
 STORM WATER SEWER IMPROVEMENTS

Baughman Company, P.A. 315 Ellis St. Wichita, KS 67211 P 3162627271 F 3162620149  
 ENGINEERING | SURVEYING | PLANNING | LANDSCAPE ARCHITECTURE

PROJECT NUMBER	DESIGN	DRAWN
	AEG	TMS
REVISIONS:	APPROVED	DATE
	AEG	04/07
	SCALE	Noted
	SHEET	

**20 OF 36**

E:\Eng\Pier 37\wss5.dwg 06-11-E692