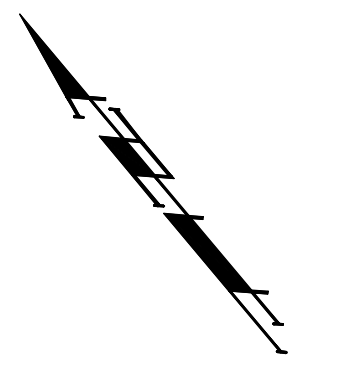
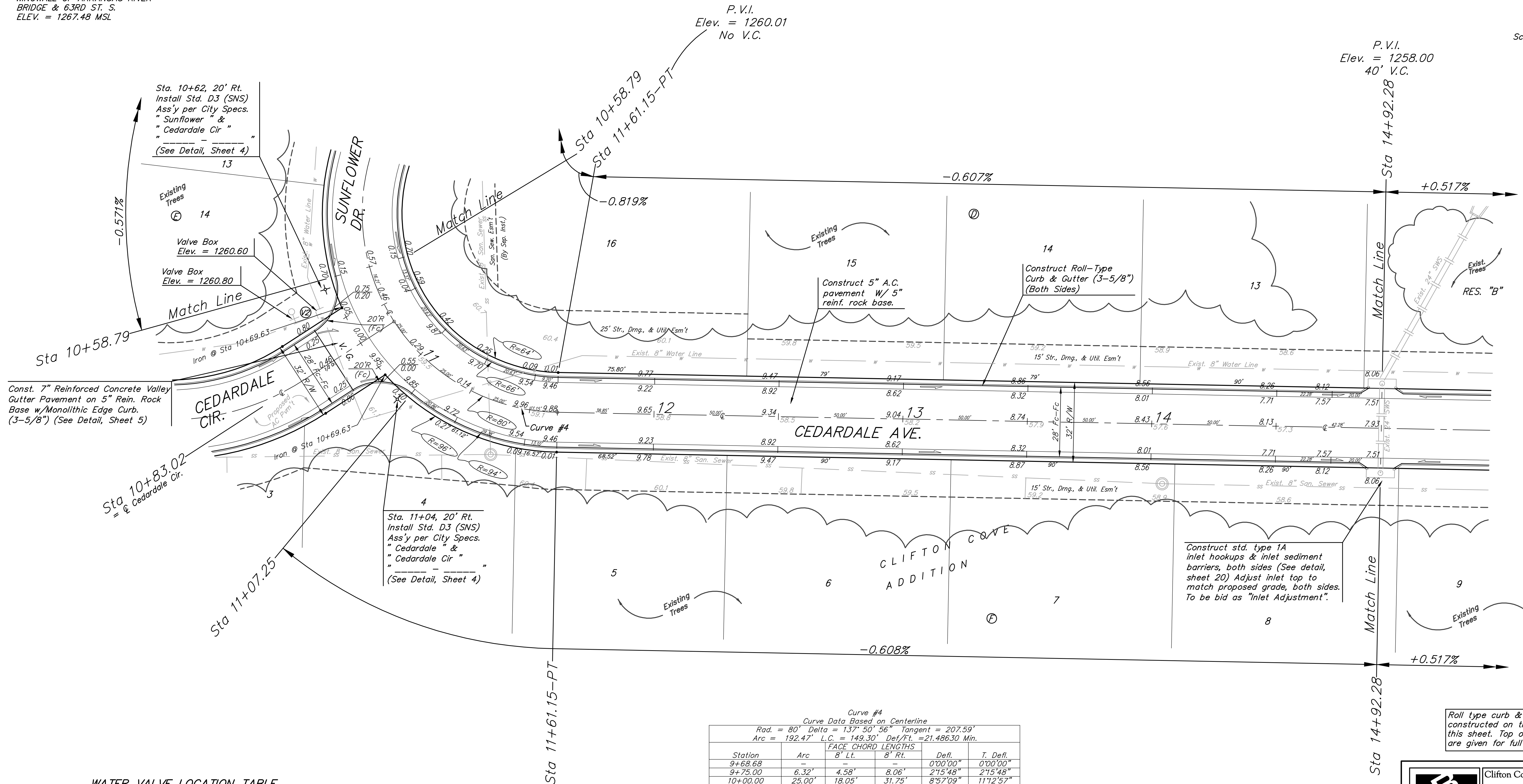


BENCHMARKS:
 BM #1: ARKANSAS RIVER BRIDGE & 63RD ST. S. CITY OF WICHITA
 BENCHMARK DISC. SW COR. OF BRIDGE, TOP OF HUBGUARD. 500'±
 E. OF GROVE.
 ELEV. = 1269.95 MSL

BM #2: BRASS PLATE ON THE NE WINGWALL OF ARKANSAS RIVER BRIDGE & 63RD ST. S.
 ELEV. = 1267.48 MSL



Scale: 1" = 20'
 • = Iron



P.V.I.
 Elev. = 1260.01
 No V.C.

P.V.I.
 Elev. = 1258.00
 40' V.C.

Sta. 10+62, 20' Rt.
 Install Std. D3 (SNS)
 Ass'y per City Specs.
 "Sunflower" &
 "Cedardale Cir."
 (See Detail, Sheet 4)

Existing Trees
 14
 Valve Box
 Elev. = 1260.60
 Valve Box
 Elev. = 1260.80

Sta 10+58.79
 Sta 11+61.15-PT

Sta 14+92.28

Const. 7" Reinforced Concrete Valley Gutter Pavement on 5" Rein. Rock Base w/Monolithic Edge Curb. (3-5/8") (See Detail, Sheet 5)

CEDARDALE CIR.

Sta 10+83.02
 = & Cedar Dale Cir.

Sta. 11+04, 20' Rt.
 Install Std. D3 (SNS)
 Ass'y per City Specs.
 "Cedardale" &
 "Cedardale Cir."
 (See Detail, Sheet 4)

CEDARDALE AVE.

CLIFTON COVE ADDITION

Construct std. type 1A inlet hookups & inlet sediment barriers, both sides (See detail, sheet 20) Adjust inlet top to match proposed grade, both sides. To be bid as "Inlet Adjustment".

Curve #4
 Curve Data Based on Centerline
 Rad. = 80' Delta = 137° 50' 56" Tangent = 207.59'
 Arc = 192.47' L.C. = 149.30' Def/Ft. = 21.48630 Min.

Station	Arc	FACE CHORD LENGTHS		Defl.	T. Defl.
		8' Lt.	8' Rt.		
9+68.68	-	-	-	0'00'00"	0'00'00"
9+75.00	6.32'	4.58'	8.06'	2'15'48"	2'15'48"
10+00.00	25.00'	18.05'	31.75'	8'57'09"	11'12'57"
10+25.00	25.00'	18.05'	31.75'	8'57'09"	20'10'06"
10+50.00	25.00'	18.05'	31.75'	8'57'10"	29'07'16"
10+58.79	8.79'	6.37'	11.20'	3'08'52"	32'16'08"
10+75.00	16.21'	11.73'	20.63'	5'48'17"	38'04'25"
10+83.02	8.02'	5.81'	10.22'	2'52'20"	40'56'45"
11+00.00	16.98'	12.29'	21.61'	6'04'50"	47'01'35"
11+07.25	7.25'	5.25'	9.24'	2'35'46"	49'37'21"
11+25.00	17.75'	12.84'	22.59'	6'21'23"	55'58'44"
11+50.00	25.00'	18.05'	31.75'	8'57'10"	64'55'54"
11+61.15	11.15'	8.08'	14.21'	3'59'34"	68'55'28"

WATER VALVE LOCATION TABLE

VALVE NUMBER	BASELINE STATION	OFFSET DISTANCE	OFFSET DIRECTION
V2	10+68.69	24.36'	Rt.

Paving contractor will be responsible to operate all water valves on the project, in the presence of the inspector, to ensure accessibility to the valves, and that all valves are left in the "ON" position when the project is completed.

Existing Trees Shall be removed ONLY with approval of the Engineer. Trees Not in Direct Conflict With Proposed New Construction Shall Remain And Be Protected From Damage. Cost to be Included in Bid Item "Site Clearing & Restoration"

Roll type curb & gutter to be constructed on the pavement on this sheet. Top of curb elevation are given for full height curb.

P.V.I.
 Elev. = 1258.00
 40' V.C.

Clifton Cove Addition - Phase 1

Baughman **CEDARDALE AVE.**
 STA 10+58.79 TO STA 14+92.28

Baughman Company, P.A. 315 Ellis St. Wichita, KS 67211 P 316-262-7271 F 316-262-0149
 ENGINEERING | SURVEYING | PLANNING | LANDSCAPE ARCHITECTURE

PROJECT NUMBER 472-84227	DESIGN MWS/JAK	DRAWN TMS
REVISIONS:	APPROVED	DATE 5/17/06
	SCALE Noted	SHEET

9 OF 31

Clifton Cove Add\Phase 1\Str3 05-08-E320