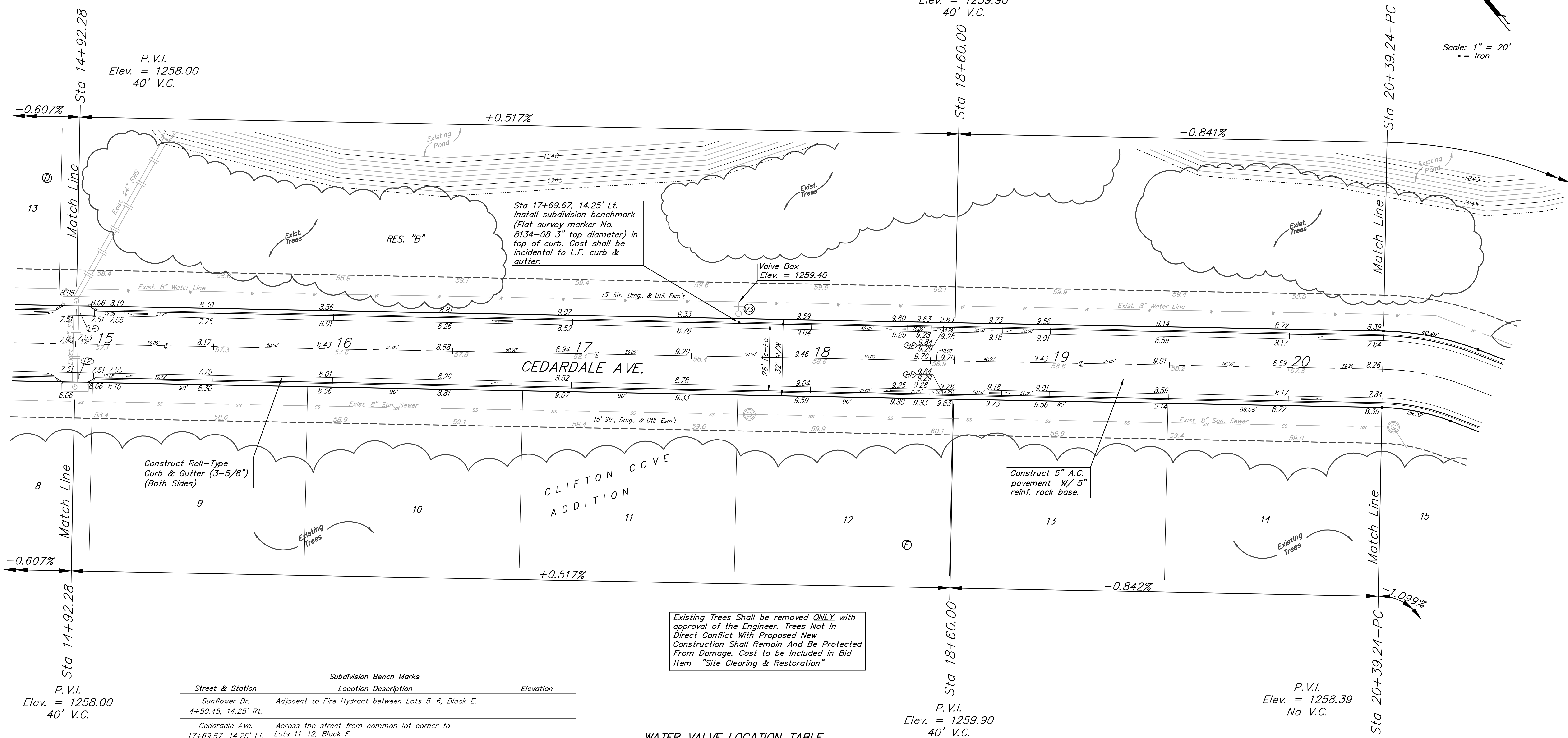


**BENCHMARKS:**  
 BM #1: ARKANSAS RIVER BRIDGE & 63RD ST. S. CITY OF WICHITA  
 BENCHMARK DISC. SW COR. OF BRIDGE, TOP OF HUBGUARD. 500'± E. OF GROVE.  
 ELEV. = 1269.95 MSL

BM #2: BRASS PLATE ON THE NE WINGWALL OF ARKANSAS RIVER BRIDGE & 63RD ST. S.  
 ELEV. = 1267.48 MSL

Scale: 1" = 20'  
 • = Iron



P.V.I.  
 Elev. = 1258.00  
 40' V.C.

P.V.I.  
 Elev. = 1259.90  
 40' V.C.

P.V.I.  
 Elev. = 1258.00  
 40' V.C.

P.V.I.  
 Elev. = 1259.90  
 40' V.C.

P.V.I.  
 Elev. = 1258.39  
 No V.C.

Sta 17+69.67, 14.25' Lt.  
 Install subdivision benchmark  
 (Flat survey marker No. 8134-08 3" top diameter)  
 in top of curb. Cost shall be  
 incidental to L.F. curb & gutter.

Existing Trees Shall be removed **ONLY** with approval of the Engineer. Trees Not In Direct Conflict With Proposed New Construction Shall Remain And Be Protected From Damage. Cost to be Included in Bid Item "Site Clearing & Restoration"

Construct Roll-Type Curb & Gutter (3-5/8") (Both Sides)

Construct 5" A.C. pavement w/ 5" reinf. rock base.

Subdivision Bench Marks

Street & Station	Location Description	Elevation
Sunflower Dr. 4+50.45, 14.25' Rt.	Adjacent to Fire Hydrant between Lots 5-6, Block E.	
Cedardale Ave. 17+69.67, 14.25' Lt.	Across the street from common lot corner to Lots 11-12, Block F.	
Cedardale Ave. 25+56.05, 14.25' Rt.	Adjacent to Fire Hydrant between Lots 19-20, Block F.	
Cedardale Cir. 2+62.25, 14.25' Lt.	Adjacent to Fire Hydrant at W. End of N. Curb Return of Cedardale Ave. & Cedardale Cir.	
Sunflower Dr. 0+03.00, 17.25' Rt.	3' from end of pavement, north side of intersection of Sunflower Dr. & Jade Ave.	
Jade Ave. 2+99.45, 17.25' Rt.	Adjacent to Fire Hydrant at S. End of S. Curb Return of Jade Ave. & Jade Cir.	

WATER VALVE LOCATION TABLE

VALVE NUMBER	BASELINE STATION	OFFSET DISTANCE	OFFSET DIRECTION
V3	17+69.67	21'	Lt.

Paving contractor will be responsible to operate all water valves on the project, in the presence of the inspector, to ensure accessibility to the valves, and that all valves are left in the "ON" position when the project is completed.

Roll type curb & gutter to be constructed on the pavement on this sheet. Top of curb elevation are given for full height curb.

Baughman  
**CLIFTON COVE ADDITION - Phase 1**  
**CEARDALE AVE.**  
 STA 14+92.28 TO STA 20+39.24

Baughman Company, P.A. 315 Ellis St. Wichita, KS 67211 P 316-262-7271 F 316-262-0149  
 ENGINEERING | SURVEYING | PLANNING | LANDSCAPE ARCHITECTURE

PROJECT NUMBER 472-84227	DESIGN MWS/JAK	DRAWN TMS
REVISIONS:	APPROVED	DATE 5/17/06
	SCALE Noted	SHEET <b>10 OF 31</b>

Clifton Cove Add\Phase 1\Str4 05-08-E320