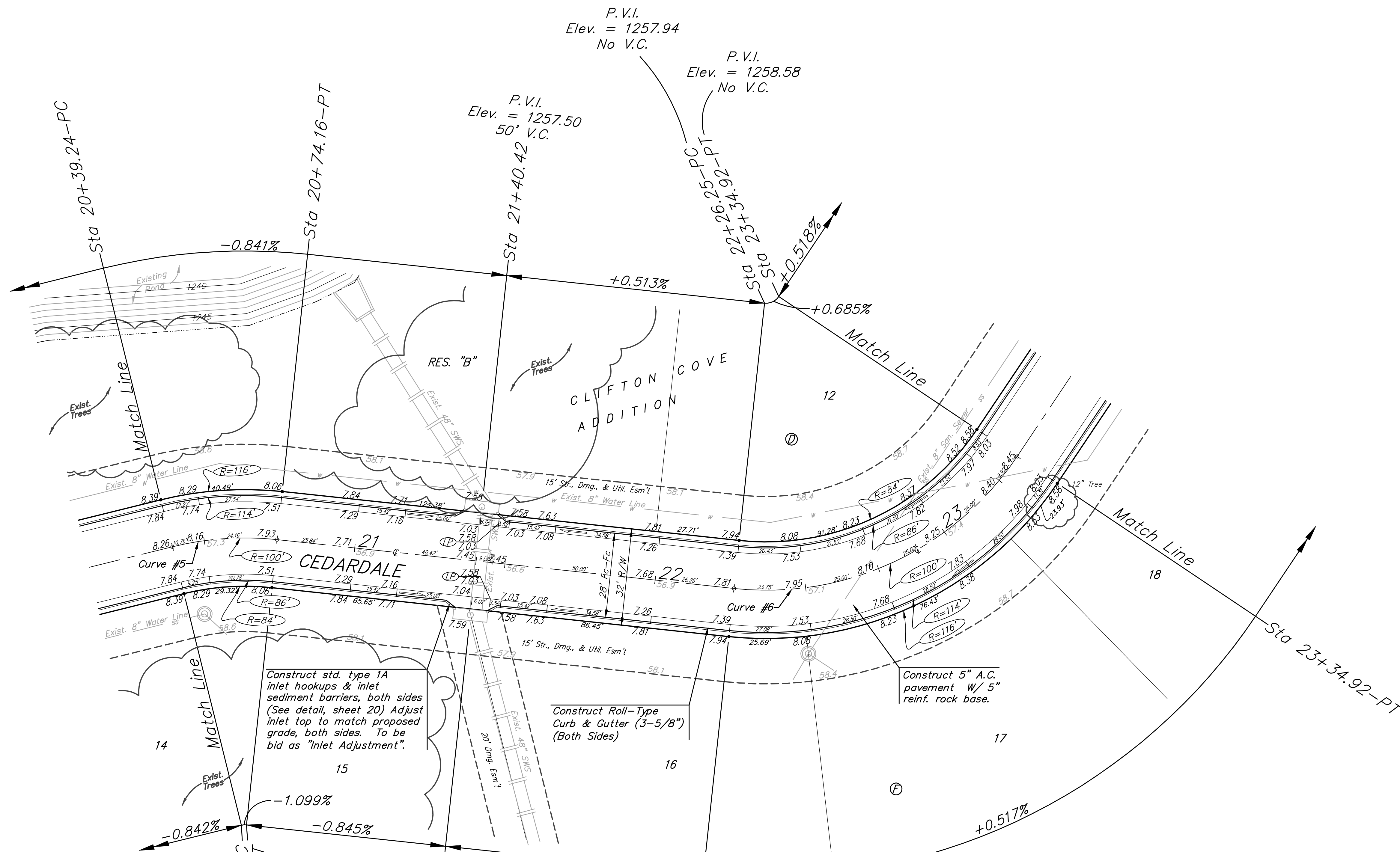
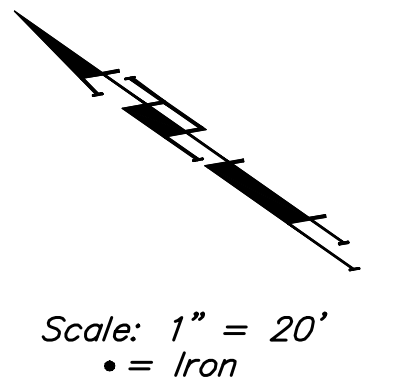


BENCHMARKS:
 BM #1: ARKANSAS RIVER BRIDGE & 63RD ST. S. CITY OF WICHITA
 BENCHMARK DISC. SW COR. OF BRIDGE, TOP OF HUBGUARD. 500'± E. OF GROVE.
 ELEV. = 1269.95 MSL

BM #2: BRASS PLATE ON THE NE WINGWALL OF ARKANSAS RIVER BRIDGE & 63RD ST. S.
 ELEV. = 1267.48 MSL



P.V.I.
 Elev. = 1258.39
 No V.C.

P.V.I.
 Elev. = 1258.06
 No V.C.

P.V.I.
 Elev. = 1257.50
 50' V.C.

P.V.I.
 Elev. = 1257.94
 No V.C.

P.V.I.
 Elev. = 1258.58
 No V.C.

P.V.I.
 Elev. = 1257.50
 50' V.C.

Existing Trees Shall be removed ONLY with approval of the Engineer. Trees Not In Direct Conflict With Proposed New Construction Shall Remain And Be Protected From Damage. Cost to be Included in Bid Item "Site Clearing & Restoration"

Curve #5
 Curve Data Based on Centerline
 Rad. = 100', Delta = 20°00'00", Tangent = 17.63'
 Arc = 34.92', L.C. = 34.73', Del/Flt. = 17.18213 Min.

Station	Arc	FACE CHORD LENGTHS		Defl.	T. Defl.
		8' Lt.	8' Rt.		
20+39.24	10.76'	13.12'	8.39'	0°00'00"	0°00'00"
20+50.00	10.76'	13.12'	8.39'	3°04'53"	3°04'53"
20+74.16	24.16'	29.39'	18.79'	6°55'07"	10°00'00"

Curve #6
 Curve Data Based on Centerline
 Rad. = 100', Delta = 62°15'41", Tangent = 60.40'
 Arc = 108.67', L.C. = 103.40', Del/Flt. = 17.18820 Min.

Station	Arc	FACE CHORD LENGTHS		Defl.	T. Defl.
		8' Lt.	8' Rt.		
22+26.25	0.00'	0.00'	0.00'	0°00'00"	0°00'00"
22+50.00	23.75'	18.48'	28.91'	6°48'13"	6°48'13"
22+75.00	25.00'	19.45'	30.42'	7°09'42"	13°57'55"
23+00.00	25.00'	19.45'	30.42'	7°09'43"	21°07'38"
23+25.00	25.00'	19.45'	30.42'	7°09'42"	28°17'20"
23+34.92	9.92'	7.73'	12.10'	2°50'31"	31°07'51"

Roll type curb & gutter to be constructed on the pavement on this sheet. Top of curb elevation are given for full height curb.

Baughman **CLIFTON COVE ADDITION - PHASE 1**
CEDARDALE AVE.
 STA 20+39.24 TO STA 23+34.92

Baughman Company, P.A. 315 Ellis St. Wichita, KS 67211 P 316.262.7271 F 316.262.0149
 ENGINEERING | SURVEYING | PLANNING | LANDSCAPE ARCHITECTURE

PROJECT NUMBER 472-84227	DESIGN MWS/JAK	DRAWN TMS
REVISIONS:	APPROVED	DATE 5/17/06
	SCALE Noted	SHEET 11 OF 31

Clifton Cove Add'l Phase 1/Str5 05-08-E320