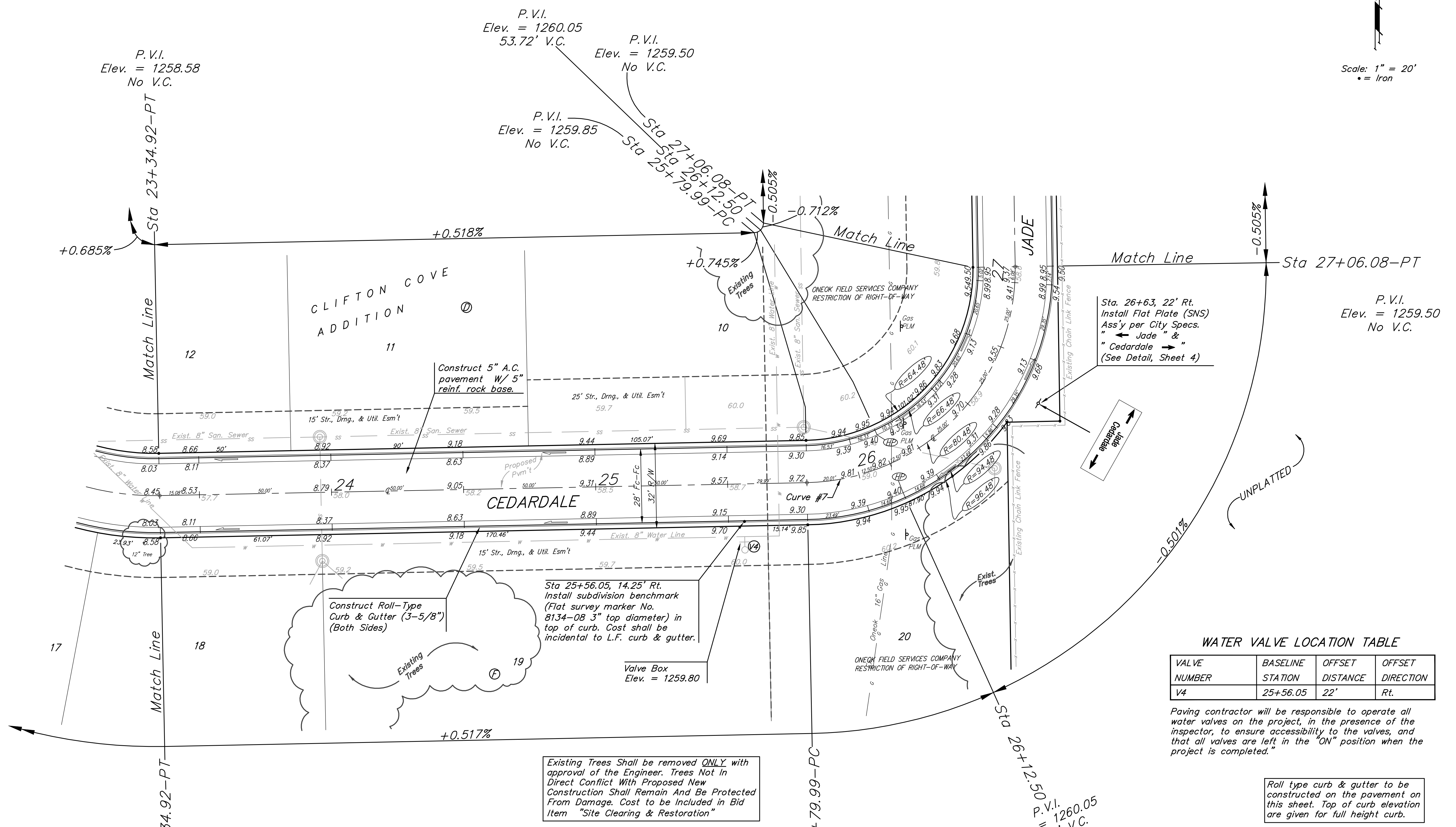
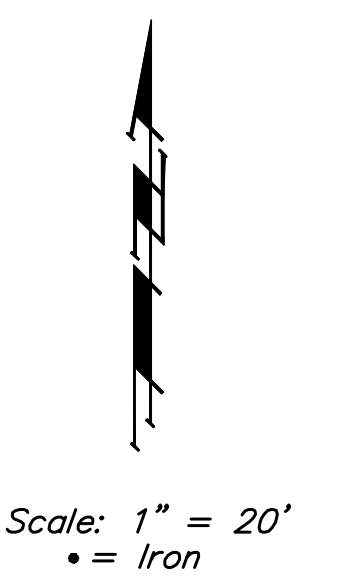


**BENCHMARKS:**  
 BM #1: ARKANSAS RIVER BRIDGE & 63RD ST. S. CITY OF WICHITA  
 BENCHMARK DISC. SW COR. OF BRIDGE, TOP OF HUBGUARD. 500'± E. OF GROVE.  
 ELEV. = 1269.95 MSL

BM #2: BRASS PLATE ON THE NE WINGWALL OF ARKANSAS RIVER BRIDGE & 63RD ST. S.  
 ELEV. = 1267.48 MSL



**WATER VALVE LOCATION TABLE**

VALVE NUMBER	BASELINE STATION	OFFSET DISTANCE	OFFSET DIRECTION
V4	25+56.05	22'	Rt.

Paving contractor will be responsible to operate all water valves on the project, in the presence of the inspector, to ensure accessibility to the valves, and that all valves are left in the "ON" position when the project is completed.

Roll type curb & gutter to be constructed on the pavement on this sheet. Top of curb elevation are given for full height curb.

Curve #7  
 Curve Data Based on Centerline  
 Rad. = 80.48' Delta = 89° 45' 50" Tangent = 80.15'  
 Arc = 126.09' L.C. = 113.58' Def./Ft. = 21.35710 Min.

Station	Arc	FACE CHORD LENGTHS		Defl.	T. Defl.
		8' Lt.	8' Rt.		
25+79.99	-	-	-	0'00'00"	0'00'00"
26+00.00	20.01'	14.50'	25.41'	7'07'21"	7'07'21"
26+25.00	25.00'	18.09'	31.71'	8'53'56"	16'01'17"
26+50.00	25.00'	18.09'	31.71'	8'53'56"	24'55'13"
26+75.00	25.00'	18.09'	31.71'	8'53'55"	33'49'08"
27+00.00	25.00'	18.09'	31.71'	8'53'56"	42'43'04"
27+06.08	6.08'	4.42'	7.74'	2'09'51"	44'52'55"

The Contractor shall be required to contact Kevin Brown @ (316)722-2605 or Stan Bowen @ (316)722-2628 with Oneok Field Services 48 hours prior to Construction along 16" Steel Gas Pipeline.

**Baughman** Clifton Cove Addition - Phase 1  
**CEDARDALE AVE.**  
 STA 23+34.92 TO STA 27+06.08

Baughman Company, P.A. 315 Ellis St. Wichita, KS 67211 P 316.262.7271 F 316.262.0149  
 ENGINEERING | SURVEYING | PLANNING | LANDSCAPE ARCHITECTURE

PROJECT NUMBER 472-84227	DESIGN MWS/JAK	DRAWN TMS
REVISIONS:	APPROVED	DATE 5/17/06
	SCALE Noted	SHEET <b>12 OF 31</b>

Clifton Cove Add\Phase 1\Str6 05-08-E320