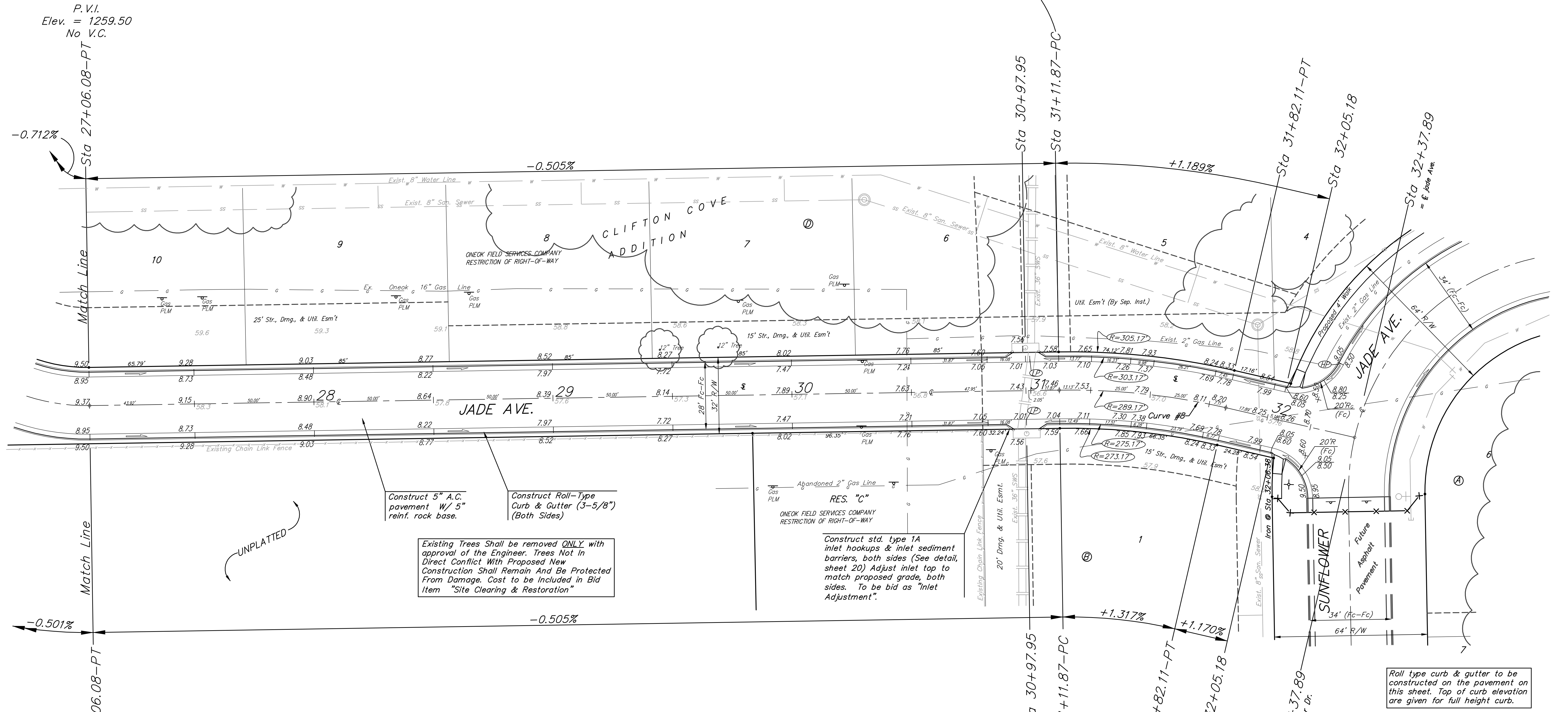


BENCHMARKS:
 BM #1: ARKANSAS RIVER BRIDGE & 63RD ST. S. CITY OF WICHITA
 BENCHMARK DISC. SW COR. OF BRIDGE, TOP OF HUBGUARD. 500'± E. OF GROVE.
 ELEV. = 1269.95 MSL

BM #2: BRASS PLATE ON THE NE WINGWALL OF ARKANSAS RIVER BRIDGE & 63RD ST. S.
 ELEV. = 1267.48 MSL

Scale: 1" = 20'
 • = Iron



P.V.I.
 Elev. = 1259.50
 No V.C.

P.V.I.
 Elev. = 1257.45
 60' V.C.

P.V.I.
 Elev. = 1259.50
 No V.C.

P.V.I.
 Elev. = 1257.45
 60' V.C.

P.V.I.
 Elev. = 1258.33
 No V.C.

Curve #8
 Curve Data Based on Centerline
 Rad. = 289.17' Delta = 13° 55' 00" Tangent = 35.29'
 Arc = 70.24' L.C. = 70.06' Def./Ft. = 5.94391 Min.

Station	Arc	FACE CHORD LENGTHS		Defl.	T. Defl.
		8' Lt.	8' Rt.		
31+11.87	-	-	-	0'00"00"	0'00"00"
31+25.00	13.13'	14.13'	12.13'	1'18"03"	1'18"03"
31+50.00	25.00'	26.89'	23.09'	2'28"35"	3'46"38"
31+75.00	25.00'	26.89'	23.09'	2'28"36"	6'15"14"
31+82.11	7.11'	7.65'	6.57'	0'42"16"	6'57"30"

UNPLATTED

Construct 5" A.C. pavement W/ 5" reinf. rock base.
 Construct Roll-Type Curb & Gutter (3-5/8") (Both Sides)

Existing Trees Shall be removed ONLY with approval of the Engineer. Trees Not In Direct Conflict With Proposed New Construction Shall Remain And Be Protected From Damage. Cost to be Included in Bid Item "Site Clearing & Restoration"

Construct std. type 1A inlet hookups & inlet sediment barriers, both sides (See detail, sheet 20) Adjust inlet top to match proposed grade, both sides. To be bid as "Inlet Adjustment".

Roll type curb & gutter to be constructed on the pavement on this sheet. Top of curb elevation are given for full height curb.

Baughman Clifton Cove Addition - Phase 1
JADE AVE.
 STA 27+06.08 TO STA 32+37.89

PROJECT NUMBER: 472-84227
 DESIGN: MWS/JAK
 DRAWN: TMS
 APPROVED: DATE: 5/17/06
 SCALE: Noted
 SHEET: 13 OF 31

Clifton Cove Add\Phase 1\Str7 05-08-E320