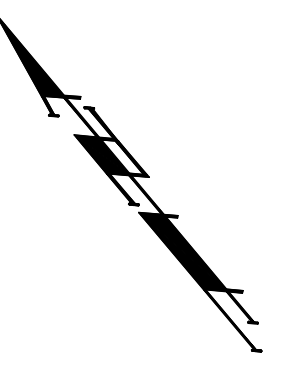
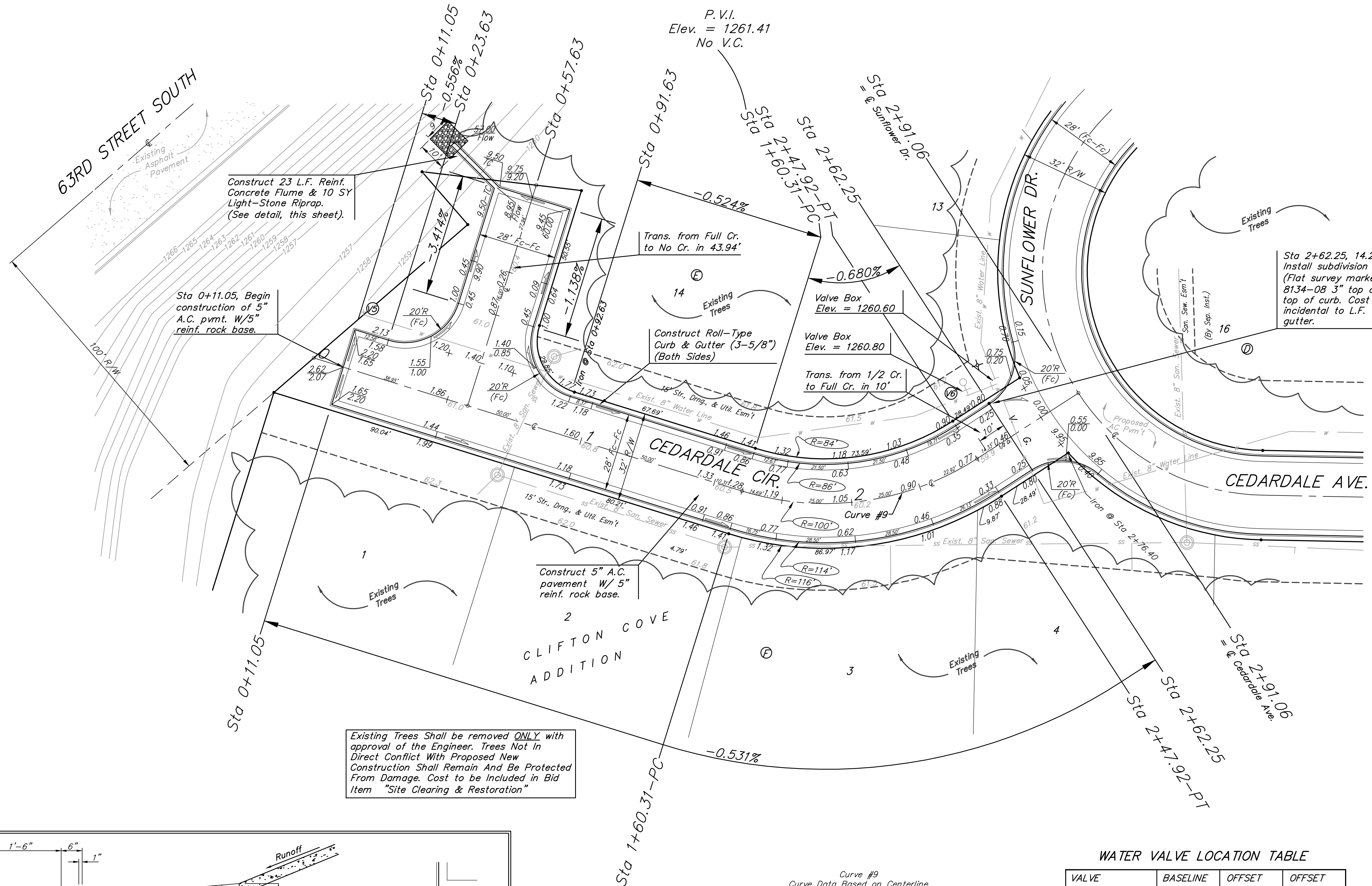


BENCHMARKS:
 BM #1: ARKANSAS RIVER BRIDGE & 63RD ST. S. CITY OF WICHITA
 BENCHMARK DISC. SW COR. OF BRIDGE, TOP OF HUBGUARD. 500'± E. OF GROVE.
 ELEV. = 1269.95 MSL

BM #2: BRASS PLATE ON THE NE WINGWALL OF ARKANSAS RIVER BRIDGE & 63RD ST. S.
 ELEV. = 1267.48 MSL



Scale: 1" = 20'
 • = Iron



Construct 23 L.F. Reinf. Concrete Flume & 10 SY Light-Stone Riprap. (See detail, this sheet).

Sta 0+11.05, Begin construction of 5" A.C. pvmnt. W/5" reinf. rock base.

Construct Roll-Type Curb & Gutter (3-5/8") (Both Sides)

Valve Box Elev. = 1260.60

Valve Box Elev. = 1260.80

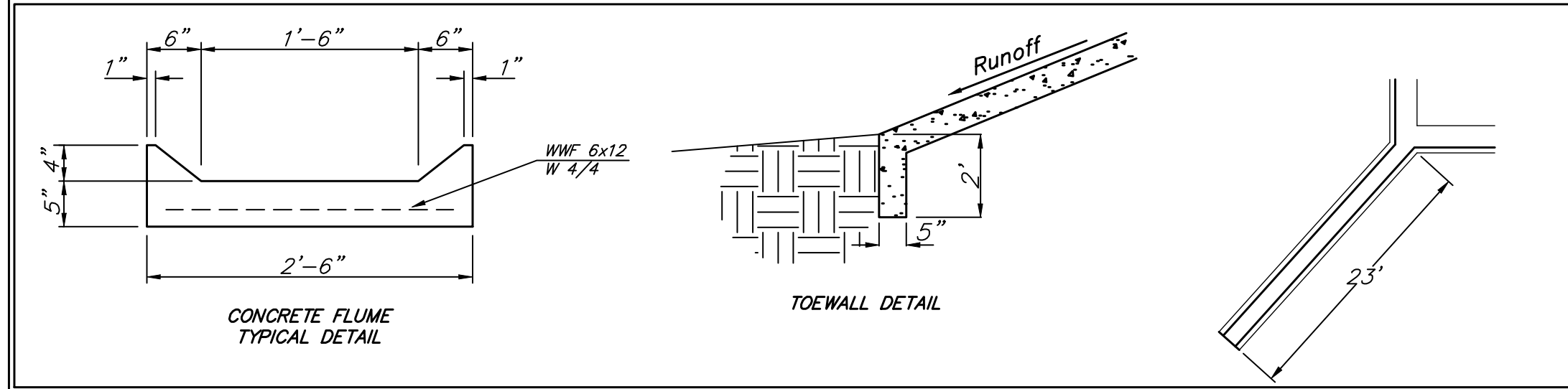
Trans. from 1/2 Cr. to Full Cr. in 10'

Sta 2+62.25, 14.25' Lt. Install subdivision benchmark (Flat survey marker No. 8134-08 3" top diameter) in top of curb. Cost shall be incidental to L.F. curb & gutter.

CLIFTON COVE ADDITION

Existing Trees Shall be removed ONLY with approval of the Engineer. Trees Not in Direct Conflict With Proposed New Construction Shall Remain And Be Protected From Damage. Cost to be Included in Bid Item "Site Clearing & Restoration"

Roll type curb & gutter to be constructed on the pavement on this sheet. Top of curb elevation are given for full height curb.



Curve #9
 Curve Data Based on Centerline
 Rad. = 100' Delta = 50° 11' 48" Tangent = 46.84'
 Arc = 87.61' L.C. = 84.83' Def./Ft. = 17.18868 Min.

Station	Arc	FACE CHORD LENGTHS		Defl.	T. Defl.
		8' Lt.	8' Rt.		
1+60.31	-	-	-	0'00'00"	0'00'00"
1+75.00	14.69'	11.45'	17.91'	4'72'30"	4'72'30"
2+00.00	25.00'	19.45'	30.42'	7'09'43"	11'22'13"
2+25.00	25.00'	19.45'	30.42'	7'09'43"	18'31'56"
2+47.92	22.92'	17.84'	27.90'	6'33'58"	25'05'54"

WATER VALVE LOCATION TABLE

VALVE NUMBER	BASELINE STATION	OFFSET DISTANCE	OFFSET DIRECTION
V5	0+12.42	20'	Lt.
V6	2+58.00	22.76'	Lt.

Paving contractor will be responsible to operate all water valves on the project, in the presence of the inspector, to ensure accessibility to the valves, and that all valves are left in the "ON" position when the project is completed.

Baughman
 Clifton Cove Addition - Phase 1
CEDARDALE CIR.
 STA 0+11.05 TO STA 2+91.06

Baughman Company, P.A. 315 Ellis St. Wichita, KS 67211 P 316-262-7271 F 316-262-0149
 ENGINEERING | SURVEYING | PLANNING | LANDSCAPE ARCHITECTURE

PROJECT NUMBER 472-84227	DESIGN MWS/JAK	DRAWN TMS
REVISIONS:	APPROVED	DATE 5/17/06
	SCALE Noted	
	SHEET	14 OF 31

Clifton Cove Add'l Phase 1 Str8 05-08-E320