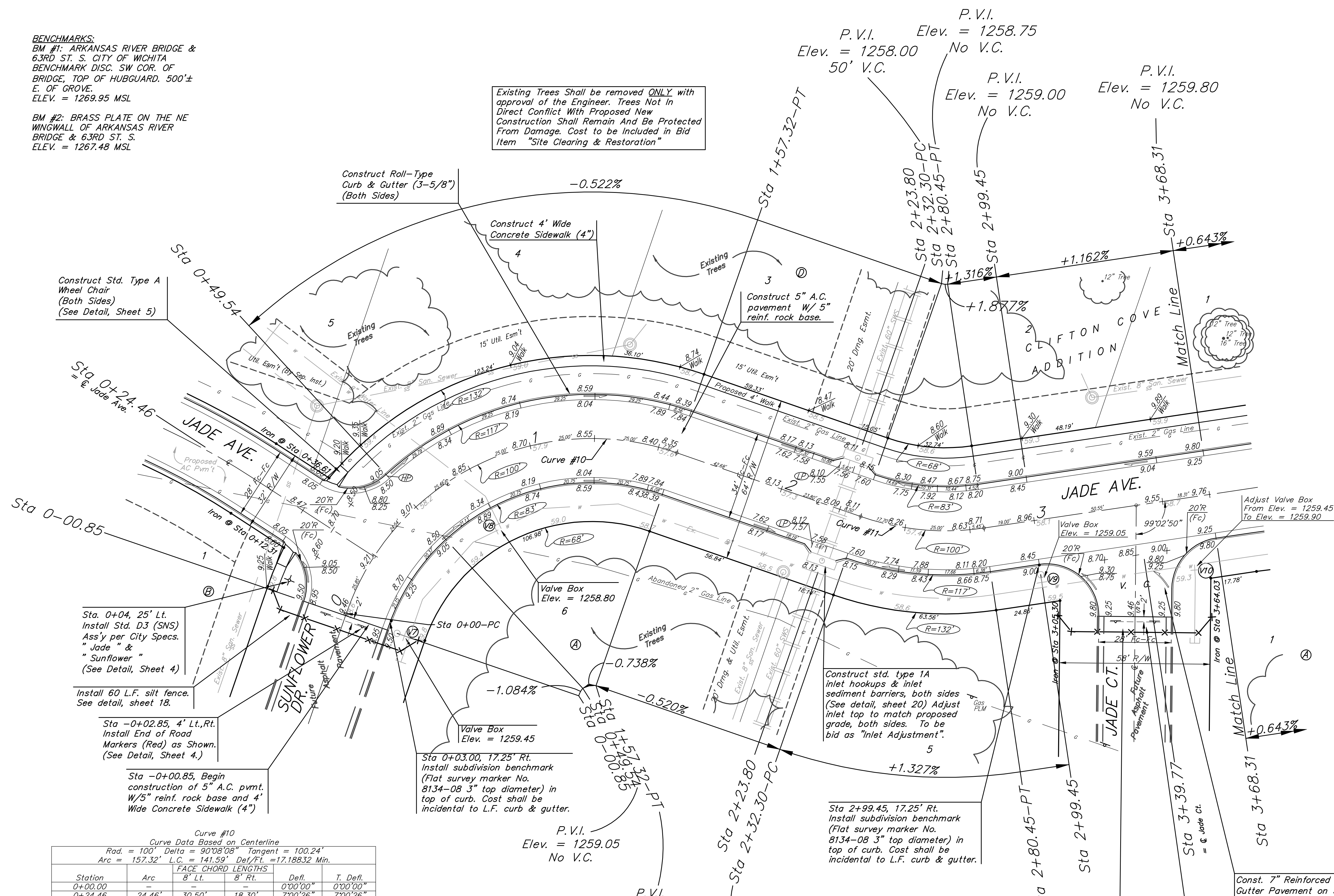
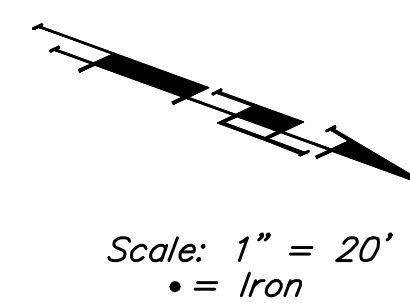


BENCHMARKS:
 BM #1: ARKANSAS RIVER BRIDGE & 63RD ST. S. CITY OF WICHITA BENCHMARK DISC. SW COR. OF BRIDGE, TOP OF HUBGUARD. 500'± E. OF GROVE. ELEV. = 1269.95 MSL

BM #2: BRASS PLATE ON THE NE WINGWALL OF ARKANSAS RIVER BRIDGE & 63RD ST. S. ELEV. = 1267.48 MSL

Existing Trees Shall be removed ONLY with approval of the Engineer. Trees Not in Direct Conflict With Proposed New Construction Shall Remain And Be Protected From Damage. Cost to be Included in Bid Item "Site Clearing & Restoration"



WATER VALVE LOCATION TABLE

VALVE NUMBER	BASELINE STATION	OFFSET DISTANCE	OFFSET DIRECTION
V7	0+00	24'	Rt.
V8	0+74.87	26'	Rt.
V9	2+99.45	24'	Rt.
V10	3+58.56	26'	Rt.

Paving contractor will be responsible to operate all water valves on the project, in the presence of the inspector, to ensure accessibility to the valves, and that all valves are left in the "ON" position when the project is completed.

Curve #10
 Curve Data Based on Centerline
 Rad. = 100' Delta = 90°08'08" Tangent = 100.24'
 Arc = 157.32' L.C. = 141.59' Def/Ft. = 17.18832 Min.

Station	Arc	FACE CHORD LENGTHS		Defl.	T. Defl.
		8' Lt.	8' Rt.		
0+00.00	-	-	-	0°00'00"	0°00'00"
0+24.46	24.46'	30.50'	18.30'	7°00'26"	7°00'26"
0+49.54	25.08'	31.27'	18.76'	7°11'05"	14°11'31"
0+75.00	25.46'	31.74'	19.04'	7°17'36"	21°29'07"
1+00.00	25.00'	31.17'	18.70'	7°09'43"	28°38'50"
1+25.00	25.00'	31.17'	18.70'	7°09'42"	35°48'32"
1+50.00	25.00'	31.17'	18.70'	7°09'43"	42°58'15"
1+57.32	7.32'	9.15'	5.49'	2°05'49"	45°04'04"

Curve #11
 Curve Data Based on Centerline
 Rad. = 100' Delta = 27°35'12" Tangent = 24.55'
 Arc = 48.15' L.C. = 47.68' Def/Ft. = 17.18795 Min.

Station	Arc	FACE CHORD LENGTHS		Defl.	T. Defl.
		8' Lt.	8' Rt.		
2+32.30	-	-	-	0°00'00"	0°00'00"
2+50.00	17.70'	13.26'	22.10'	5°04'14"	5°04'14"
2+75.00	25.00'	18.70'	31.17'	7°09'42"	12°13'56"
2+80.45	5.45'	4.09'	6.81'	1°33'40"	13°47'36"

Roll type curb & gutter to be constructed on the pavement on this sheet. Top of curb elevation are given for full height curb.

Baughman Clifton Cove Addition - Phase 1
JADE AVE.
 STA 0+00.85 TO STA 3+68.31

PROJECT NUMBER: 472-84227
 DESIGN: MWS/JAK
 DRAWN: TMS
 APPROVED: DATE: 5/17/06
 SCALE: Noted
 SHEET: **15 OF 31**

Clifton Cove Add/Phase 1/Str9 05-08-E320