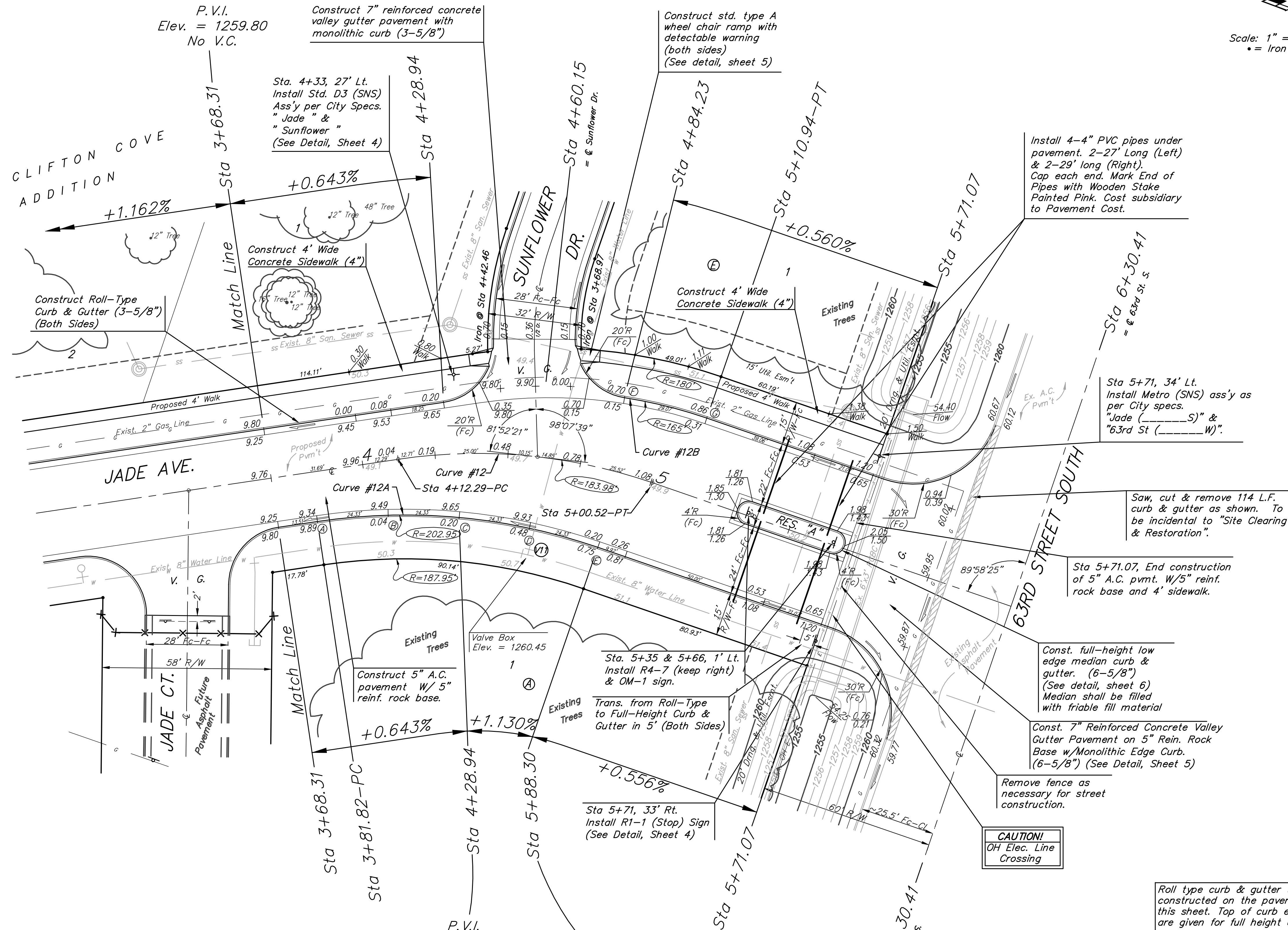
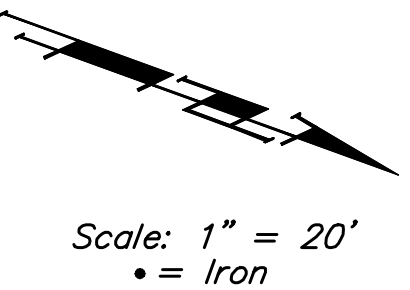


BENCHMARKS:
 BM #1: ARKANSAS RIVER BRIDGE &
 63RD ST. S. CITY OF WICHITA
 BENCHMARK DISC. SW COR. OF
 BRIDGE, TOP OF HUBGUARD. 500'±
 E. OF GROVE.
 ELEV. = 1269.95 MSL

BM #2: BRASS PLATE ON THE NE
 WINGWALL OF ARKANSAS RIVER
 BRIDGE & 63RD ST. S.
 ELEV. = 1267.48 MSL



Curve #12A
 Curve Data Based on Centerline
 Rad. = 202.95' Delta = 27° 28' 29" Tangent = 49.61'
 Arc = 97.32' L.C. = 96.39' Def./Ft. = 8.46940 Min.

Station	Arc	FACE CHORD LENGTHS	8' Rt.	Defl.	T. Defl.
A	-	-	-	0'00"00"	0'00"00"
B	24.33'	23.36'	23.36'	3'26"03"	3'26"03"
C	24.33'	23.36'	23.36'	3'26"03"	6'52"07"
D	24.33'	23.36'	23.36'	3'26"03"	10'18"11"
E	24.33'	23.36'	23.36'	3'26"03"	13'44"14"

Curve #12B
 Curve Data Based on Centerline
 Rad. = 165' Delta = 10°05' 38" Tangent = 14.57'
 Arc = 29.07' L.C. = 29.03' Def./Ft. = 10.41681 Min.

Station	Arc	FACE CHORD LENGTHS	8' Lt.	Defl.	T. Defl.
F	-	-	-	0'00"00"	0'00"00"
G	29.07'	30.44'	30.44'	5'02"49"	5'02"49"

WATER VALVE LOCATION TABLE

VALVE NUMBER	BASELINE STATION	OFFSET DISTANCE	OFFSET DIRECTION
V11	1+73.65	33.83'	Rt.

Paving contractor will be responsible to operate all water valves on the project, in the presence of the inspector, to ensure accessibility to the valves, and that all valves are left in the "ON" position when the project is completed.

Existing Trees Shall be removed ONLY with approval of the Engineer. Trees Not In Direct Conflict With Proposed New Construction Shall Remain And Be Protected From Damage. Cost to be Included in Bid Item "Site Clearing & Restoration"

Contractor Shall Install Proper Traffic Control per Sedgwick County Standards When Working In 63rd St. Right of Way. All Costs Shall be Subsidiary to Project Cost.

Clifton Cove Addition - Phase 1
JADE AVE.
 STA 3+68.31 TO STA 6+30.41

Baughman
 ENGINEERING | SURVEYING | PLANNING | LANDSCAPE ARCHITECTURE

PROJECT NUMBER: 472-84227
 DESIGN: MWS/JAK
 DRAWN: TMS
 APPROVED: DATE 5/17/06
 SCALE: Noted
 SHEET: 16 OF 31

Clifton Cove Add\Phase 1\Str1 05-08-E320